



develop

# PSU test report

*Bernhard Woerndl-Aichriedler*  
*bwa@xdevelop.at*

## 1 Contents

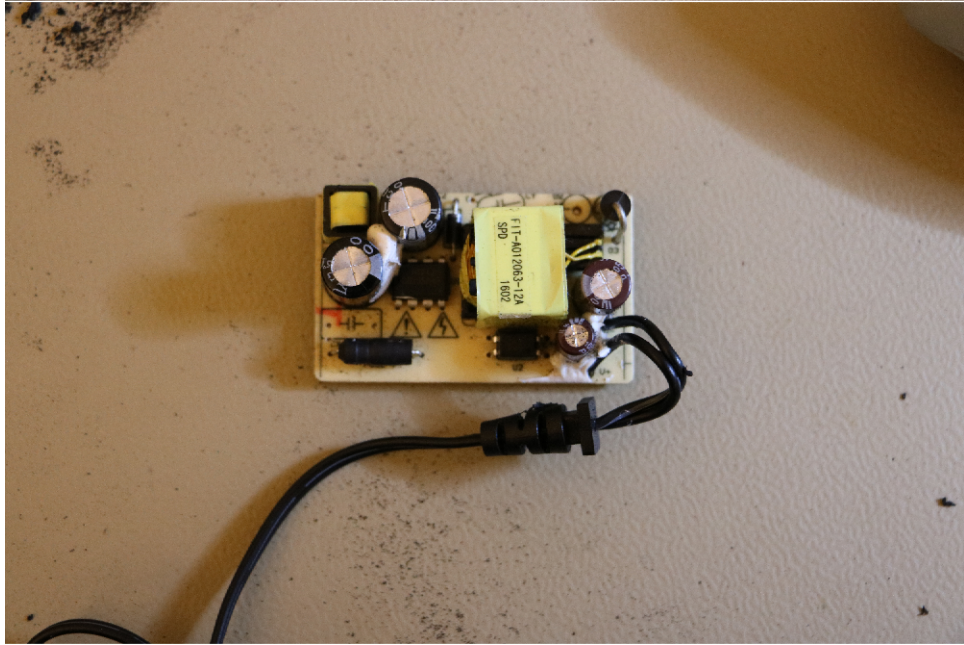
- General information
- Point of operation
- Standby power consumption
- Load testing
- Turn on voltage
- Conducted EMI
- Overload testing

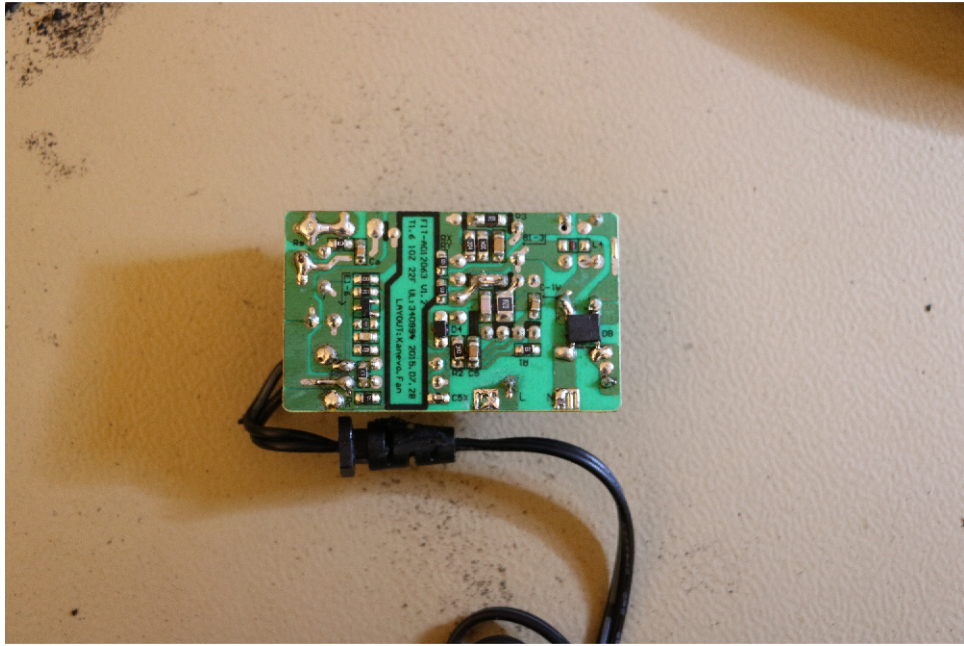
## 2 General information

Testing the following device

Manufacturer: DRAGINO  
Device name: TP12-120100E  
Serial number: 1  
Nominal voltage: 12.000V  
Nominal current: 1.000A  
Tester: Bernhard Woerndl-Aichriedler <bwa@xdevelop.at>  
Start time: 12-Jul-2016 16:52:29





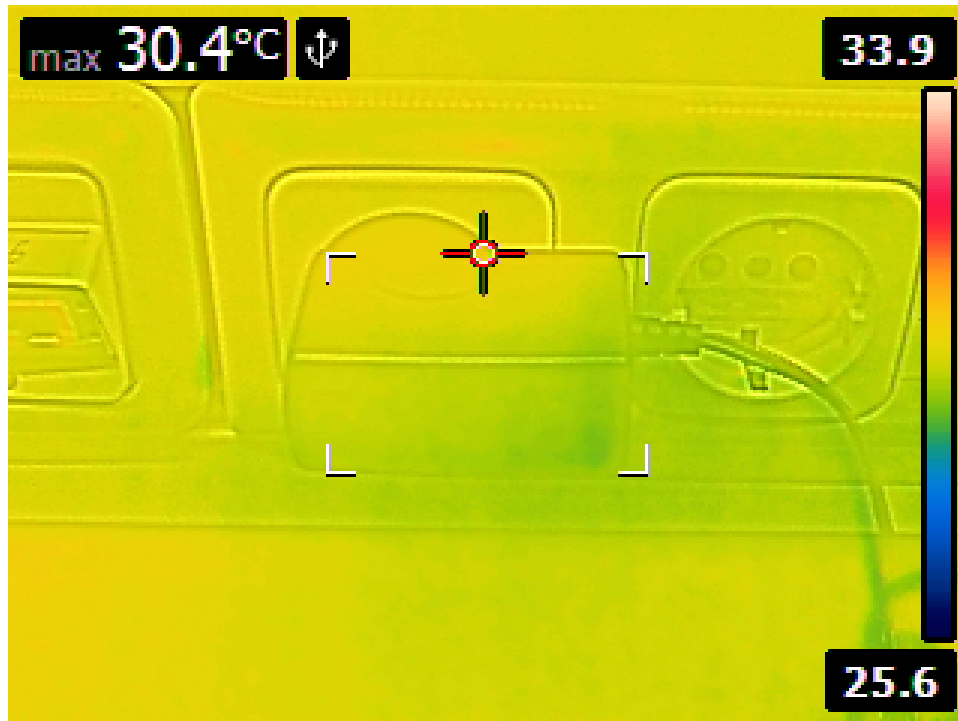


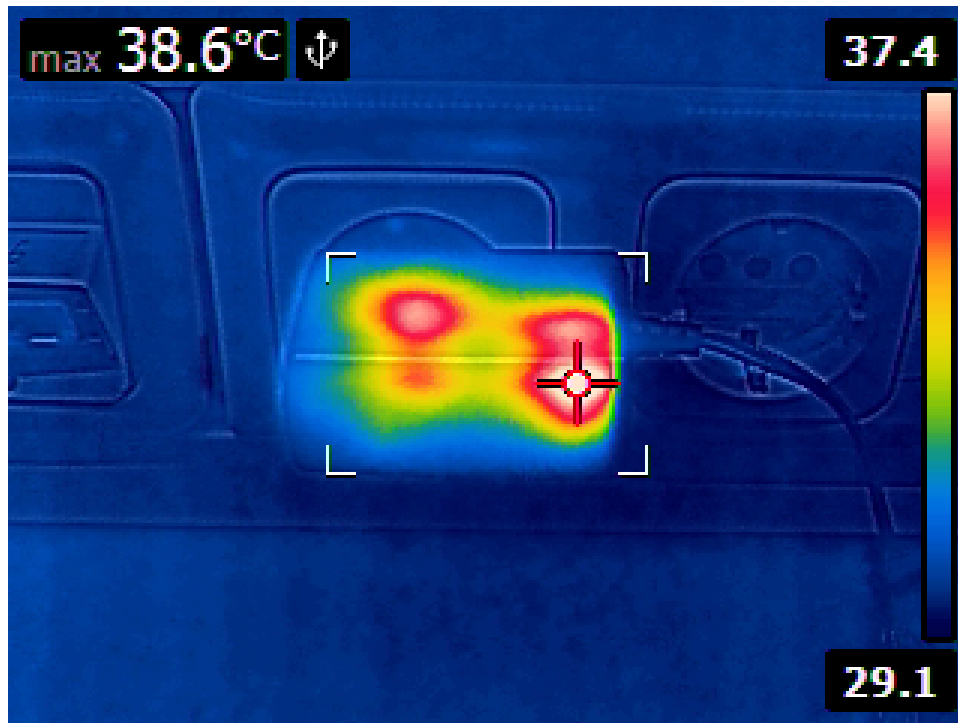
### 3 Point of operation

The test has been conducted with the following conditions

Voltage/Frequency: 250V-50Hz

Ambient Temperature: 32.17C





## 4 Standby power consumption

Voltage: 250.67V

Frequency: 50Hz

-----  
Current: 0.003834A  
-----

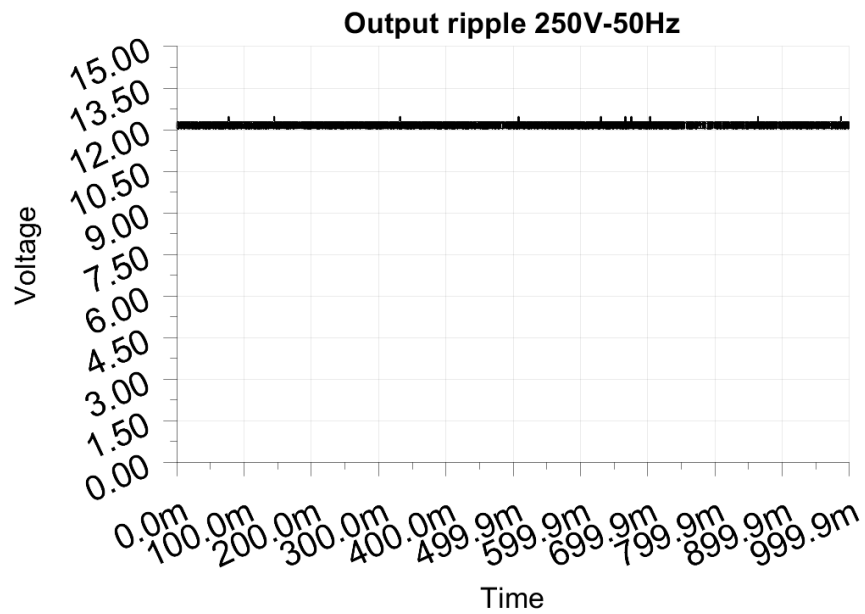
P active: 0.152W

P apparent: 0.961VA

P reactive: 0.949VAR

P factor: 0.158  
-----

Output voltage: 12.299V



## 5 Load testing

Characteristics

Voltage: 250.67V

Frequency: 50Hz

Loads: 0.000A to 1.100A

-----  
Minimum output voltage: 11.832V

Maximum output voltage: 12.258V

Regulation error absolute: -0.168V/+0.258V

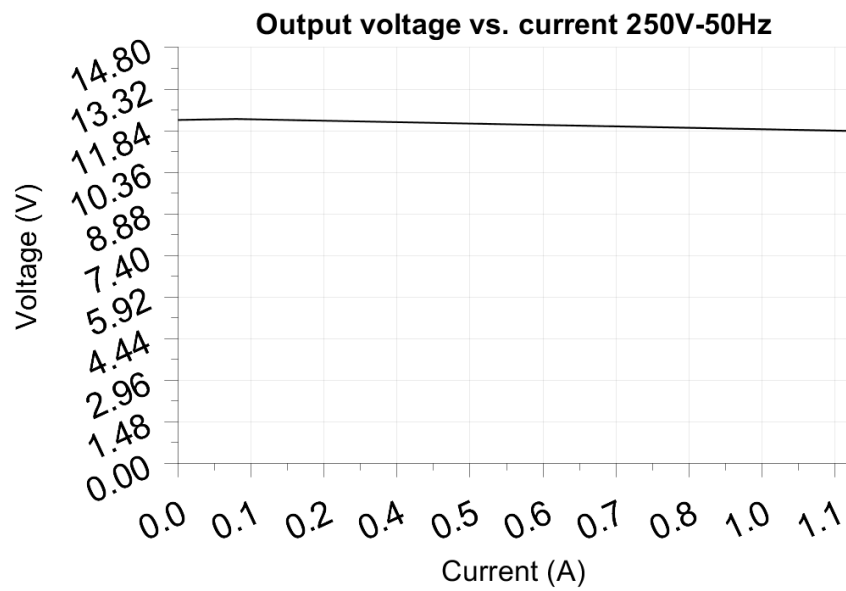
Regulation error relative: -1.4%/+2.2%

-----  
Vpp ripple&noise absolute: 0.440V

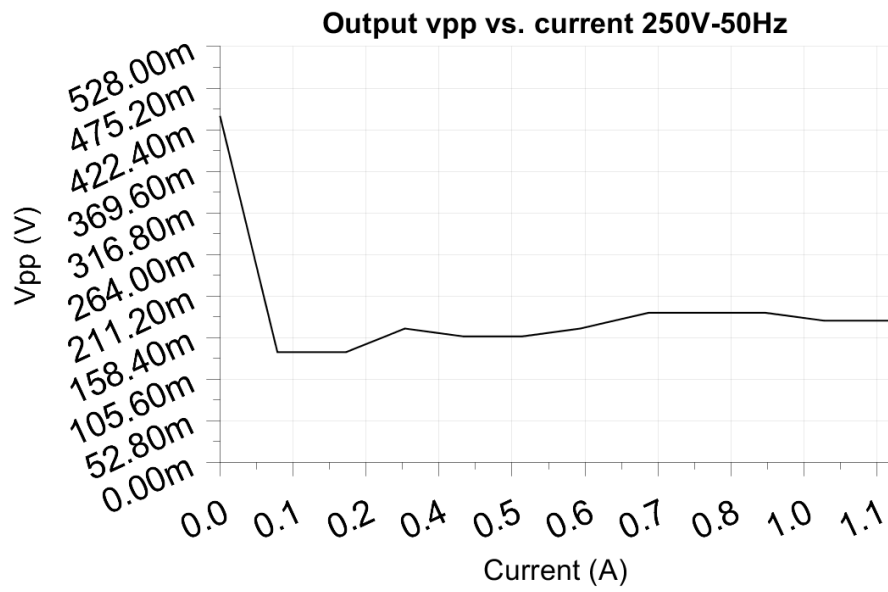
Vpp ripple&noise relative: 3.7%

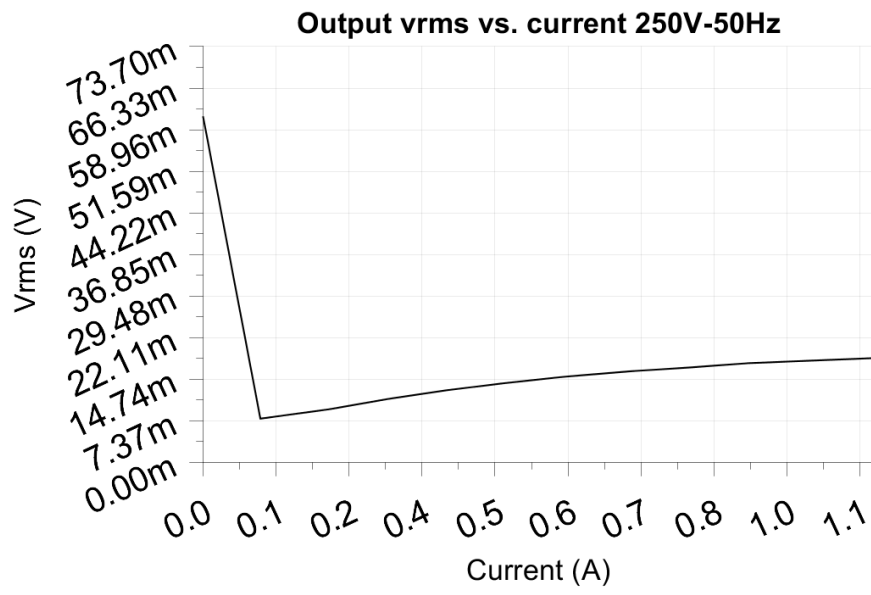
-----  
RMS ripple&noise absolute: 0.061V

RMS ripple&noise relative: 0.5%









## 6 Turn on voltage

Testing when the PSU enables it's output

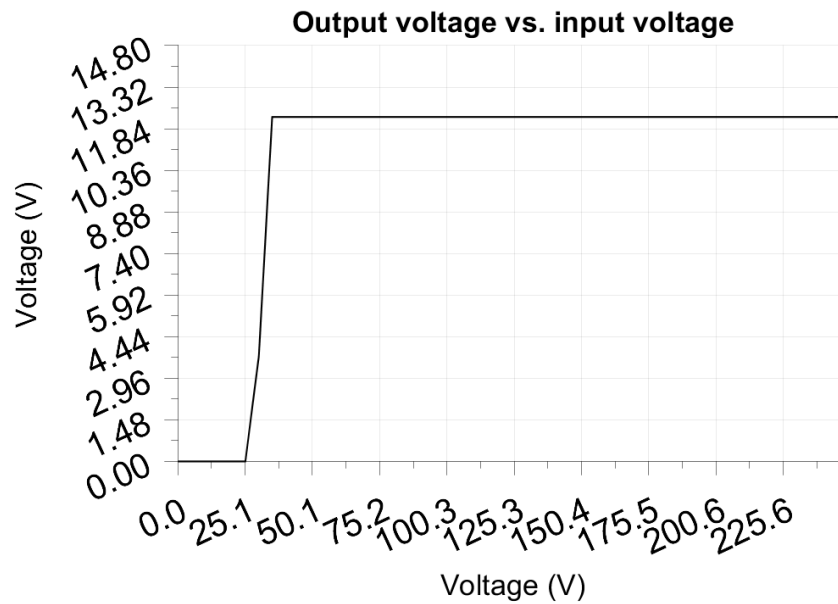
Test load: 0.100A

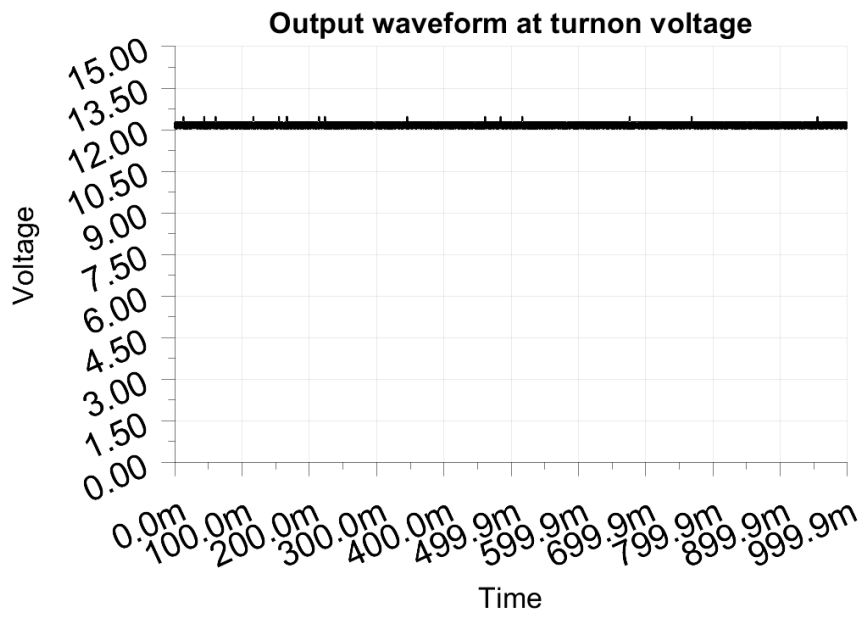
Test Frequency: 50Hz

Threshold: 9.000V

-----  
Turn-on voltage: 35.00V  
-----

Output voltage: 12.258V





## **7 Conducted EMI**

No EMI test results

## 8 Overload testing

No overload test results