



develop

PSU test report

Bernhard Woerndl-Aichriedler
bwa@xdevelop.at

1 Contents

- General information
- Point of operation
- Standby power consumption
- Load testing
- Turn on voltage
- Conducted EMI
- Overload testing

2 General information

Testing the following device

Manufacturer: LEI
Device name: MV12-N120100-C5
Serial number: 1
Nominal voltage: 12.000V
Nominal current: 1.000A
Tester: Bernhard Woerndl-Aichriedler <bwa@xdevelop.at>
Start time: 13-Jul-2016 11:02:35



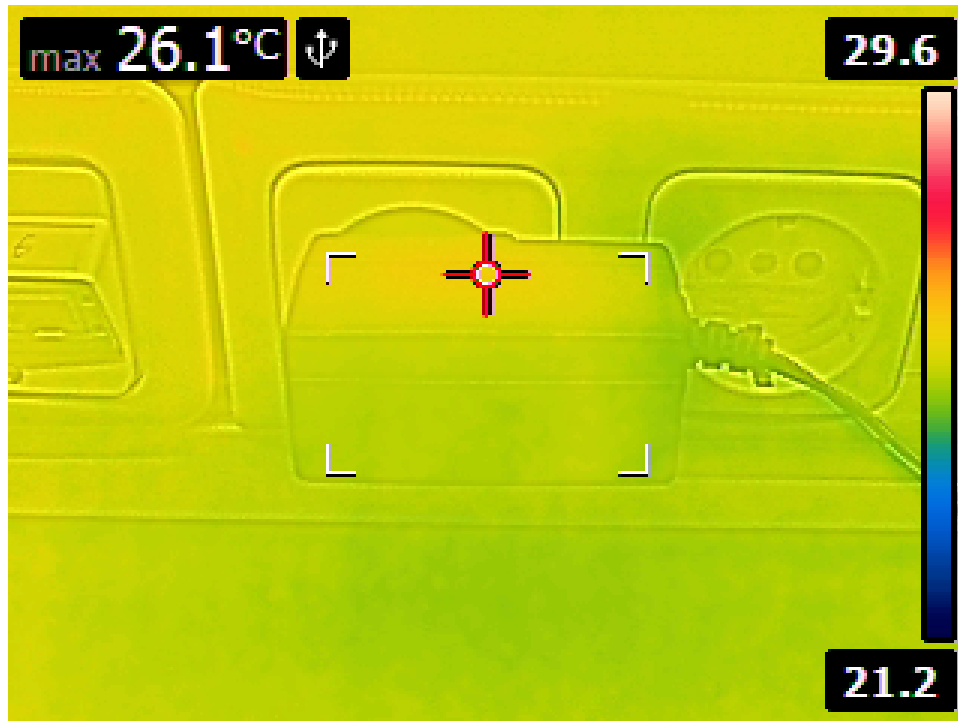


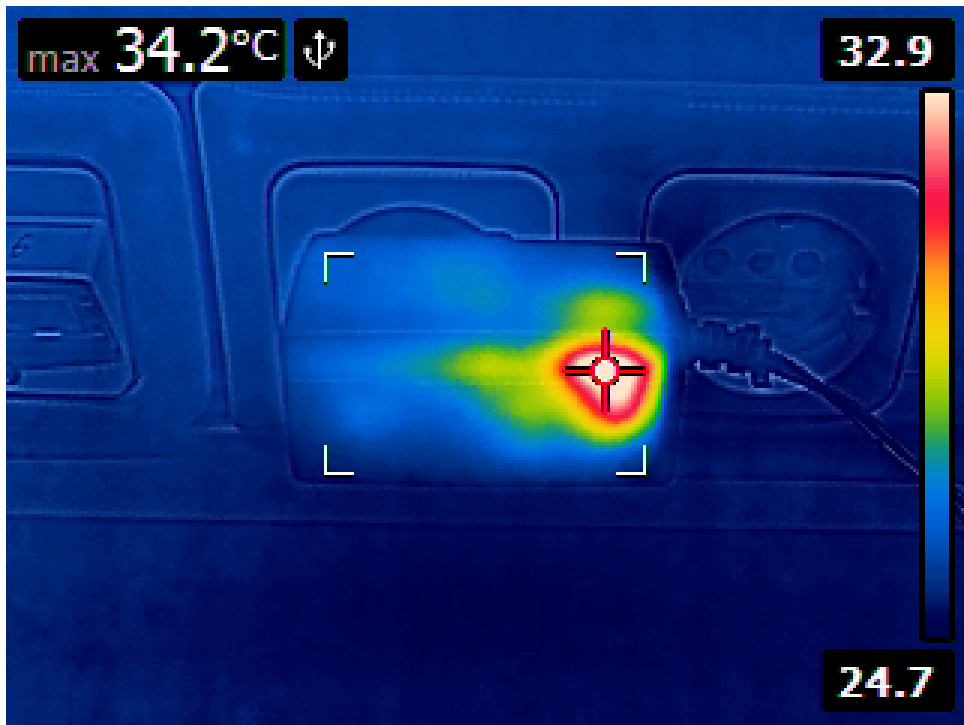
3 Point of operation

The test has been conducted with the following conditions

Voltage/Frequency: 210V-50Hz

Ambient Temperature: 28.27C





4 Standby power consumption

Voltage: 210.62V

Frequency: 50Hz

Current: 0.002396A

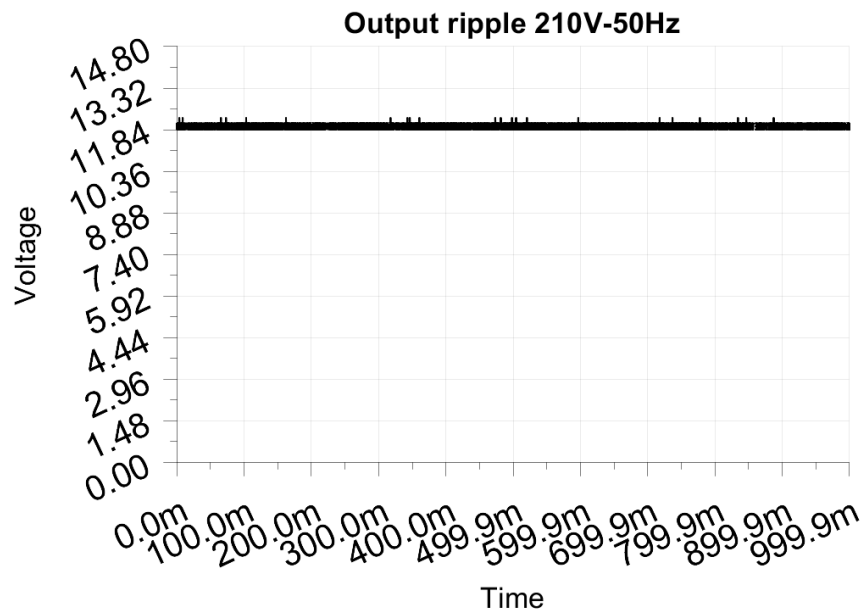
P active: 0.092W

P apparent: 0.491VA

P reactive: 0.482VAR

P factor: 0.188

Output voltage: 12.044V



5 Load testing

Characteristics

Voltage: 210.62V

Frequency: 50Hz

Loads: 0.000A to 1.000A

Minimum output voltage: 11.709V

Maximum output voltage: 12.043V

Regulation error absolute: -0.291V/+0.043V

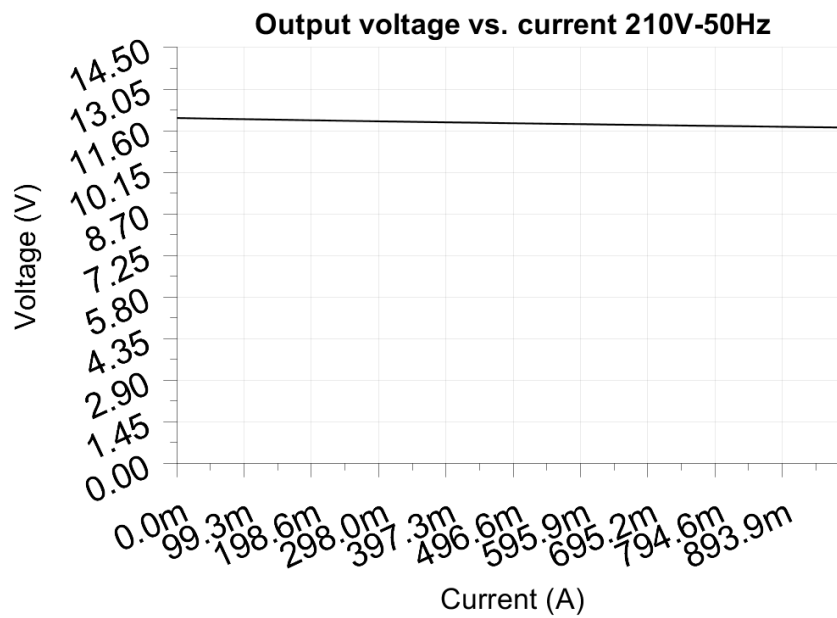
Regulation error relative: -2.4%/+0.4%

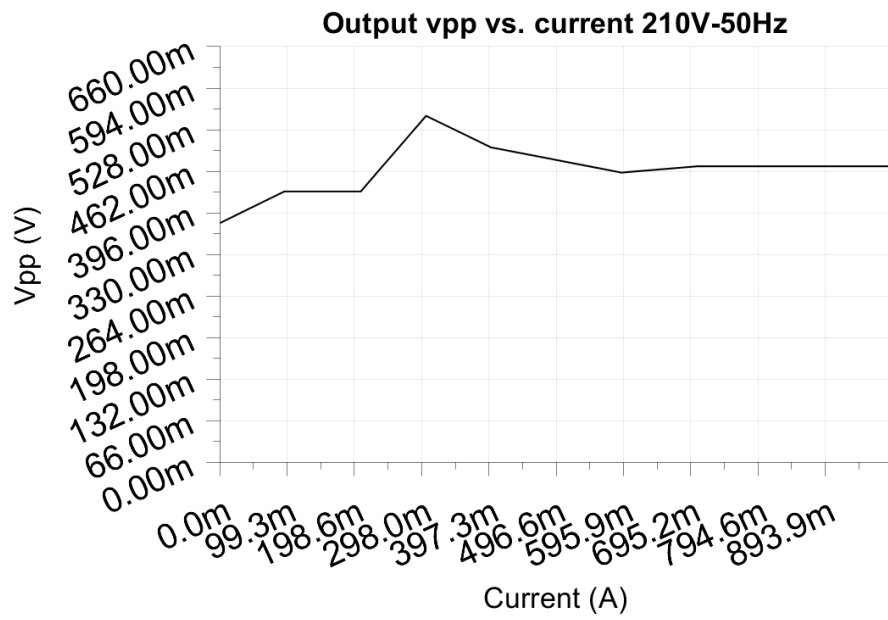
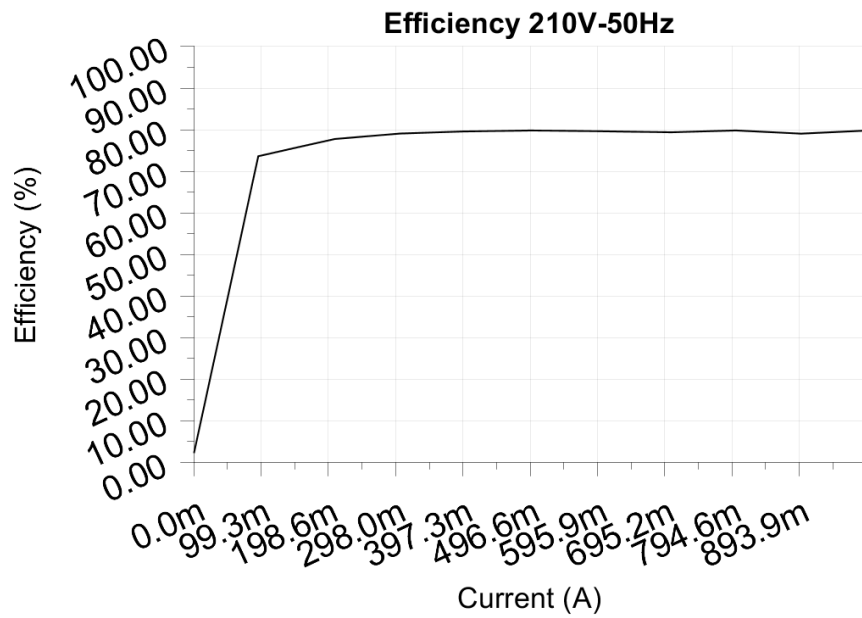
Vpp ripple&noise absolute: 0.550V

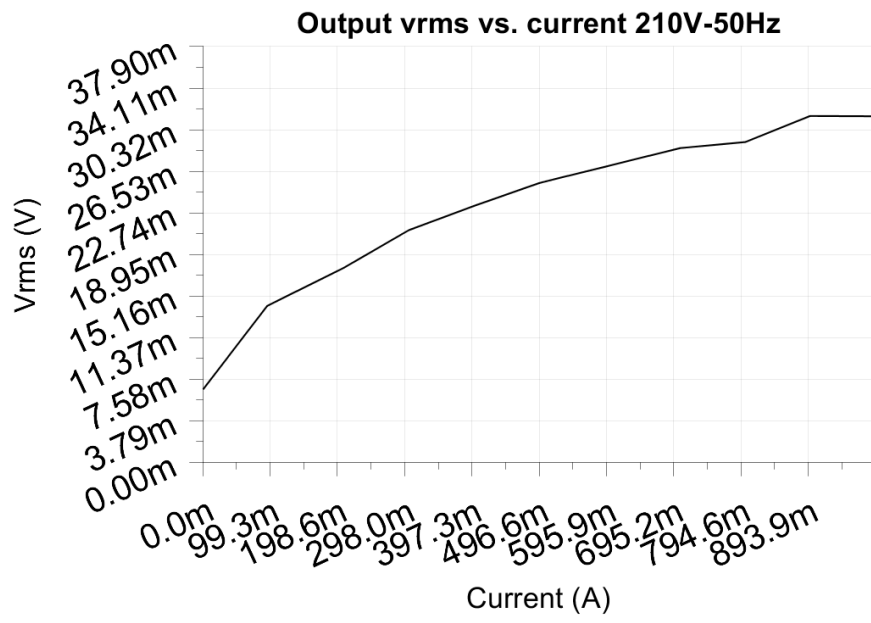
Vpp ripple&noise relative: 4.6%

RMS ripple&noise absolute: 0.032V

RMS ripple&noise relative: 0.3%







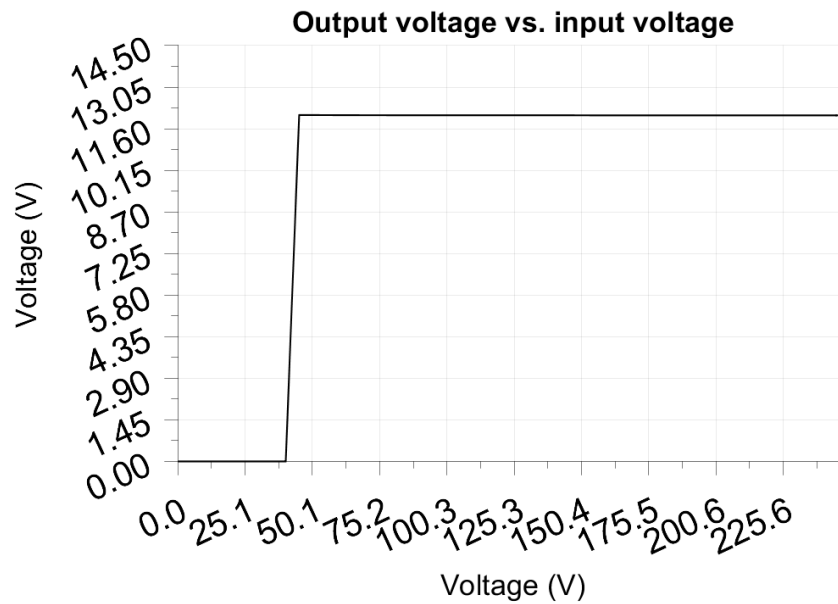
6 Turn on voltage

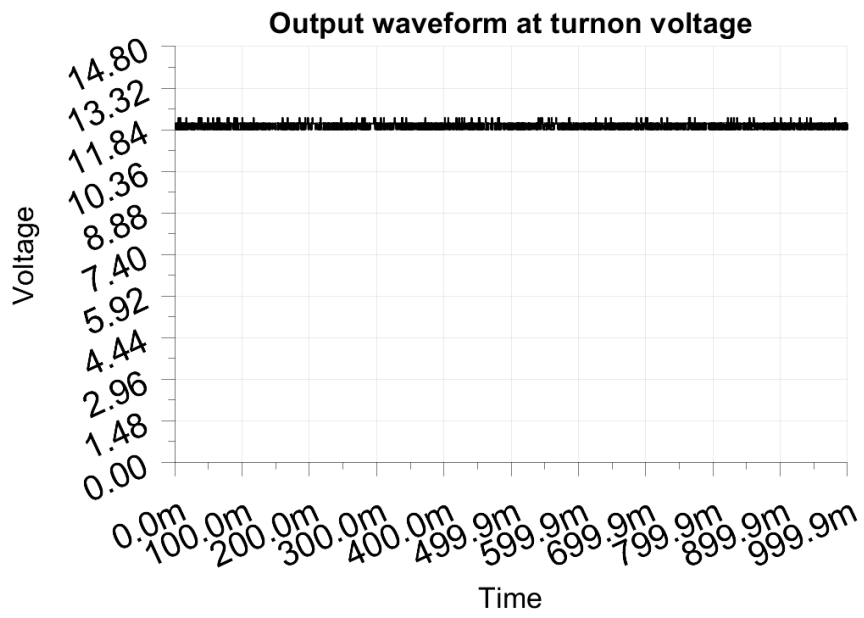
Testing when the PSU enables it's output

Test load: 0.100A
Test Frequency: 50Hz
Threshold: 9.000V

Turn-on voltage: 45.00V

Output voltage: 12.077V





7 Conducted EMI

No EMI test results

8 Overload testing

No overload test results