



develop

PSU test report

Bernhard Woerndl-Aichriedler
bwa@xdevelop.at

1 Contents

- General information
- Point of operation
- Standby power consumption
- Load testing
- Turn on voltage
- Conducted EMI
- Overload testing

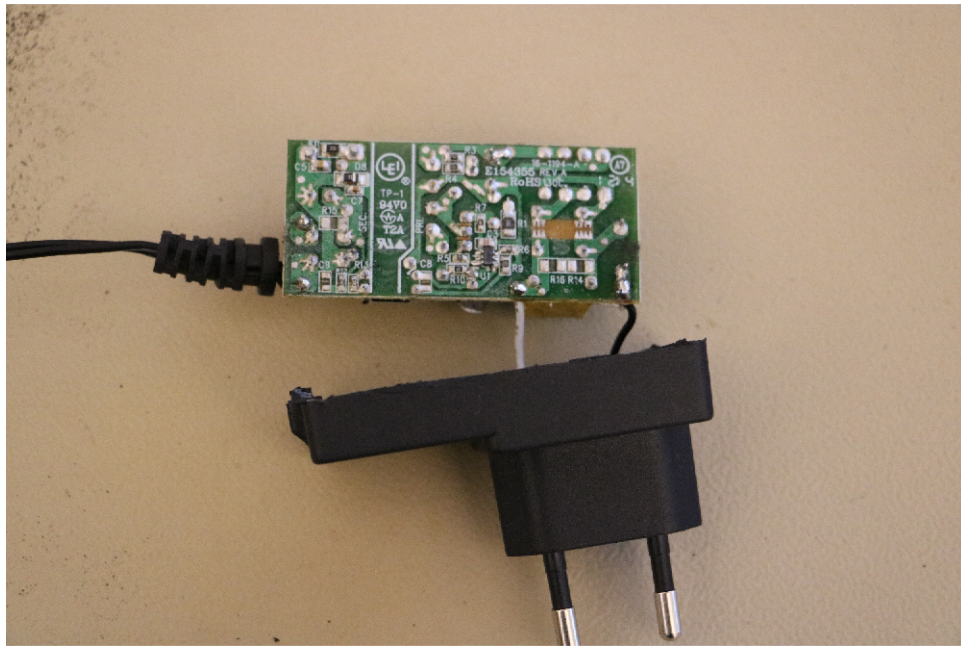
2 General information

Testing the following device

Manufacturer: LEI
Device name: MV12-N120100-C5
Serial number: 1
Nominal voltage: 12.000V
Nominal current: 1.000A
Tester: Bernhard Woerndl-Aichriedler <bwa@xdevelop.at>
Start time: 13-Jul-2016 11:02:35





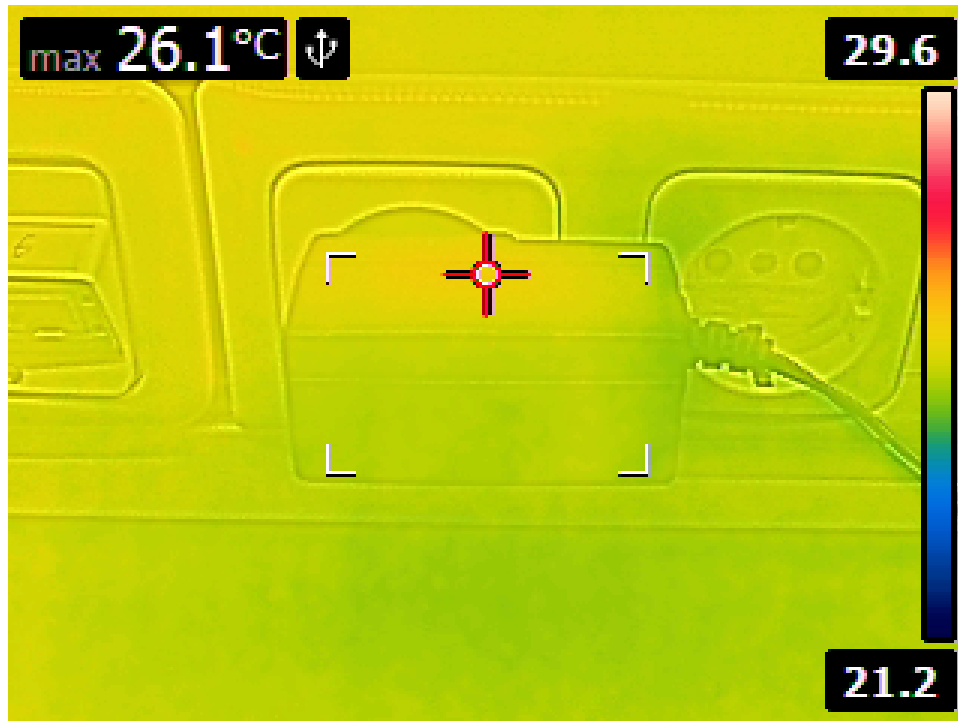


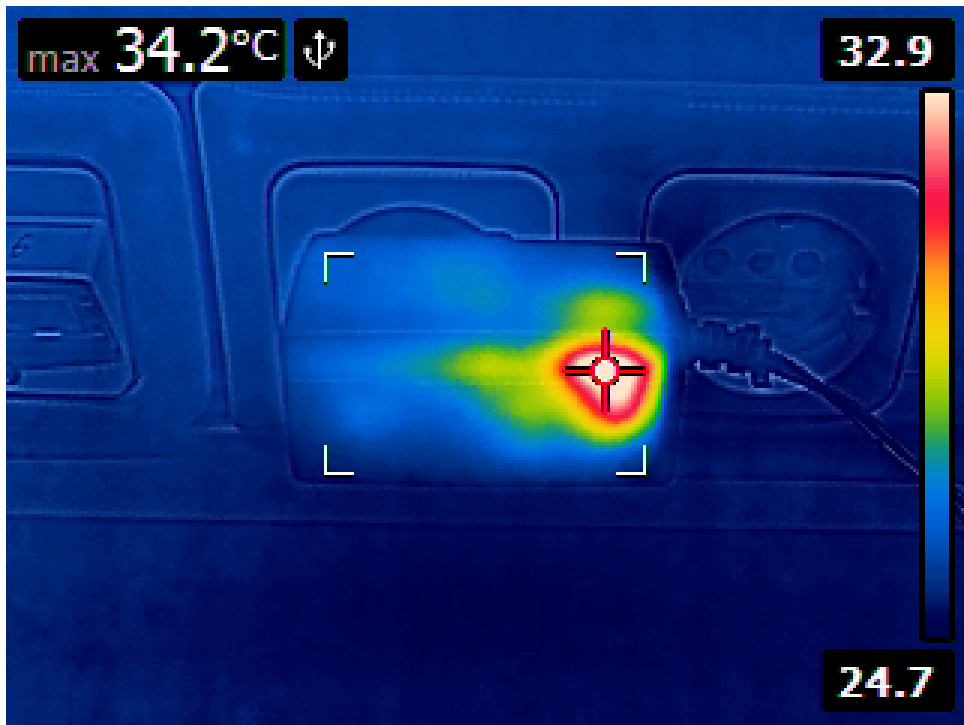
3 Point of operation

The test has been conducted with the following conditions

Voltage/Frequency: 230V-50Hz

Ambient Temperature: 28.27C





4 Standby power consumption

Voltage: 230.63V

Frequency: 50Hz

Current: 0.002255A

P active: 0.091W

P apparent: 0.520VA

P reactive: 0.512VAR

P factor: 0.175

Output voltage: 12.045V



5 Load testing

Characteristics

Voltage: 230.63V

Frequency: 50Hz

Loads: 0.000A to 1.000A

Minimum output voltage: 11.749V

Maximum output voltage: 12.104V

Regulation error absolute: -0.251V/+0.104V

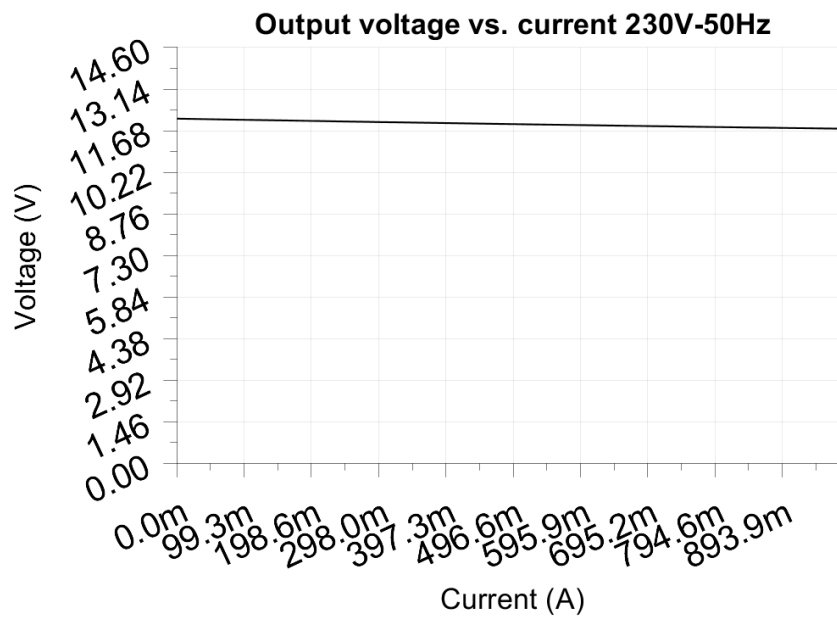
Regulation error relative: -2.1%/+0.9%

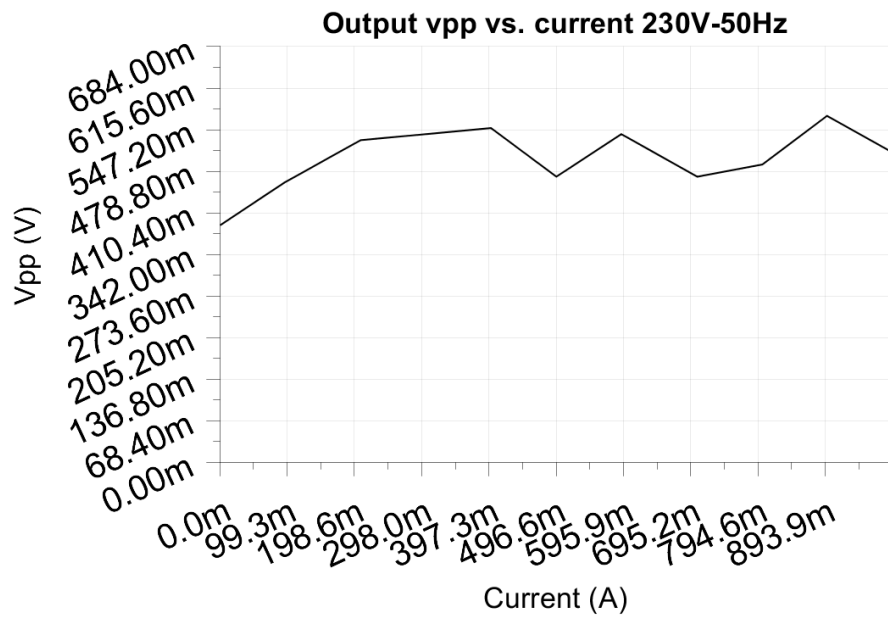
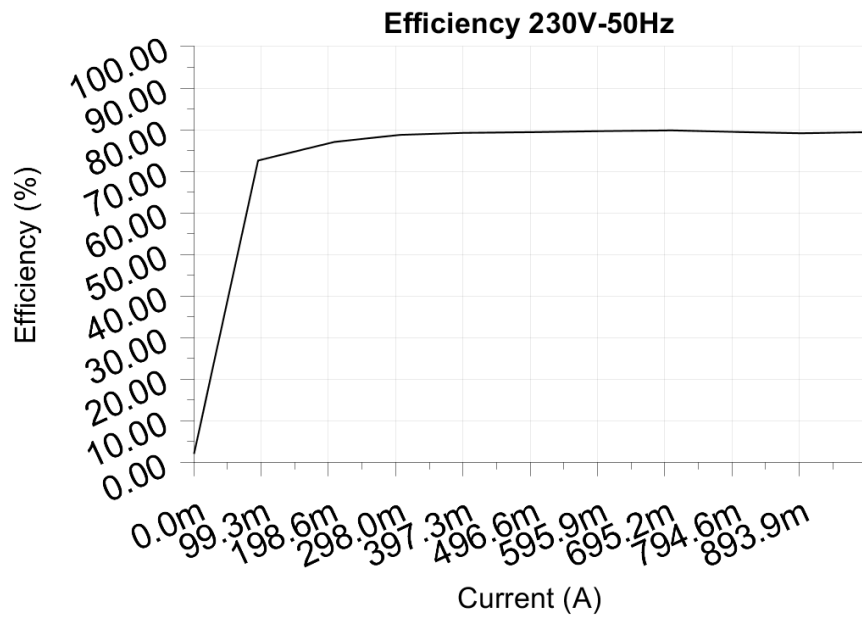
Vpp ripple&noise absolute: 0.570V

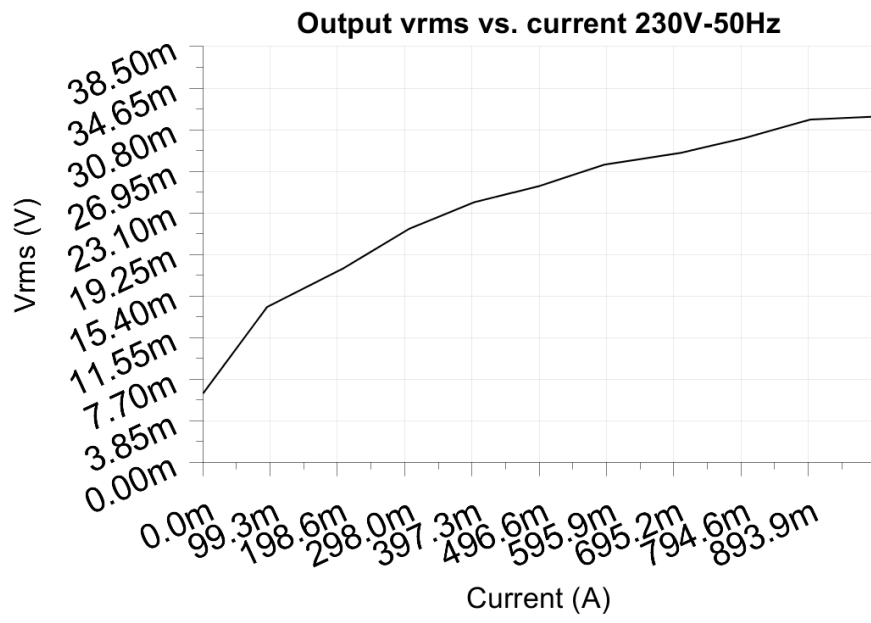
Vpp ripple&noise relative: 4.7%

RMS ripple&noise absolute: 0.032V

RMS ripple&noise relative: 0.3%







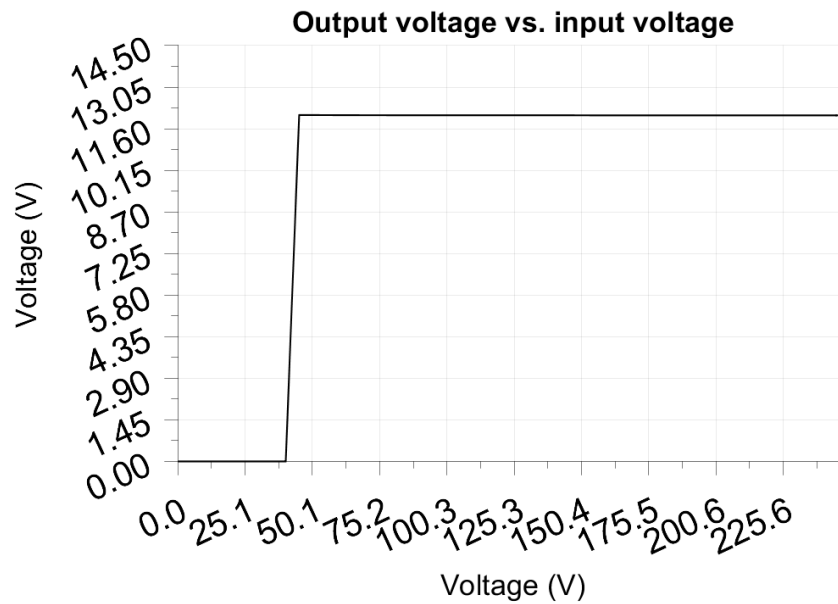
6 Turn on voltage

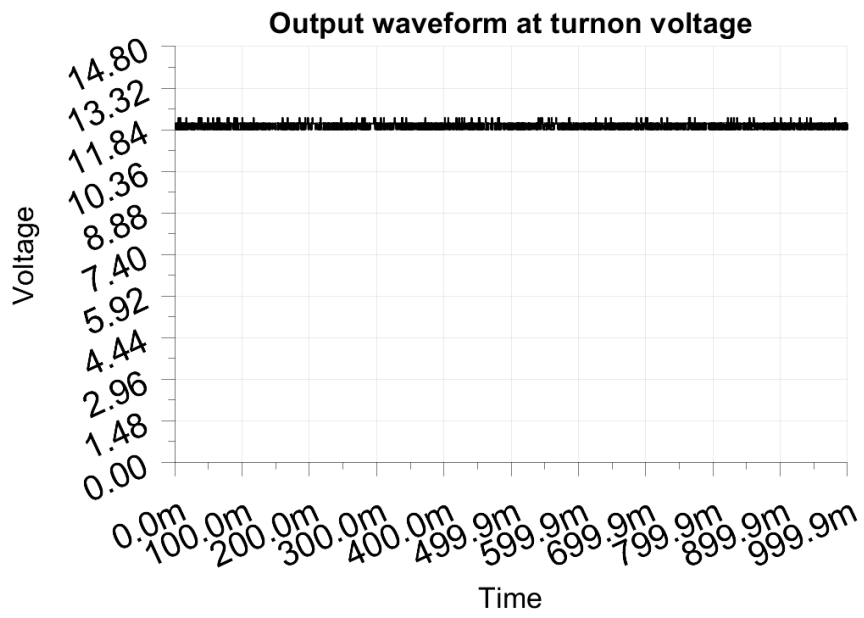
Testing when the PSU enables it's output

Test load: 0.100A
Test Frequency: 50Hz
Threshold: 9.000V

Turn-on voltage: 45.00V

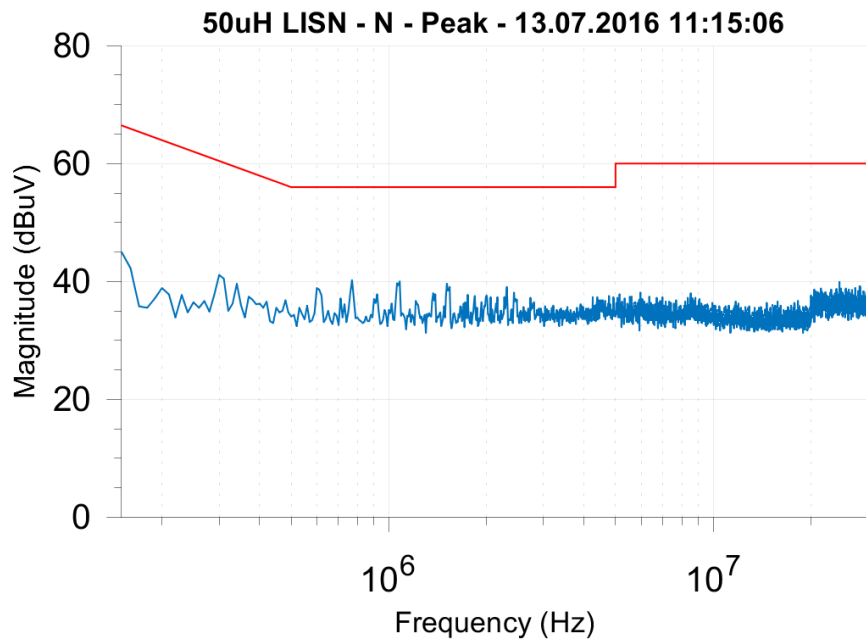
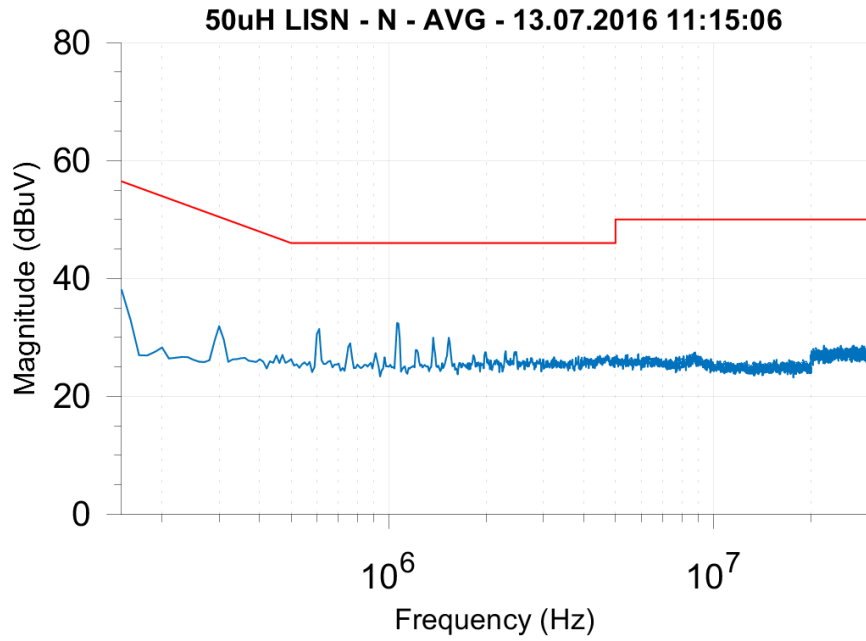
Output voltage: 12.077V

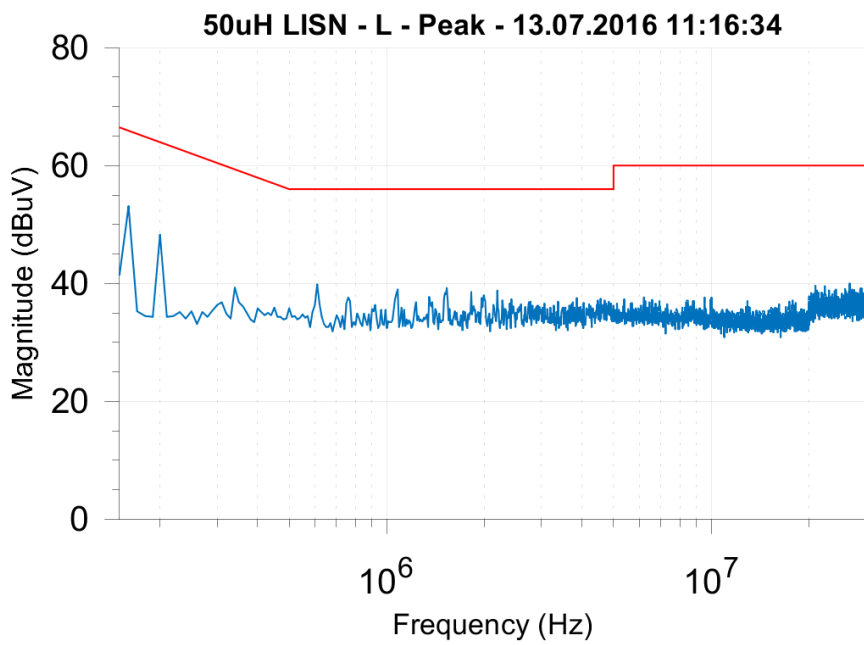
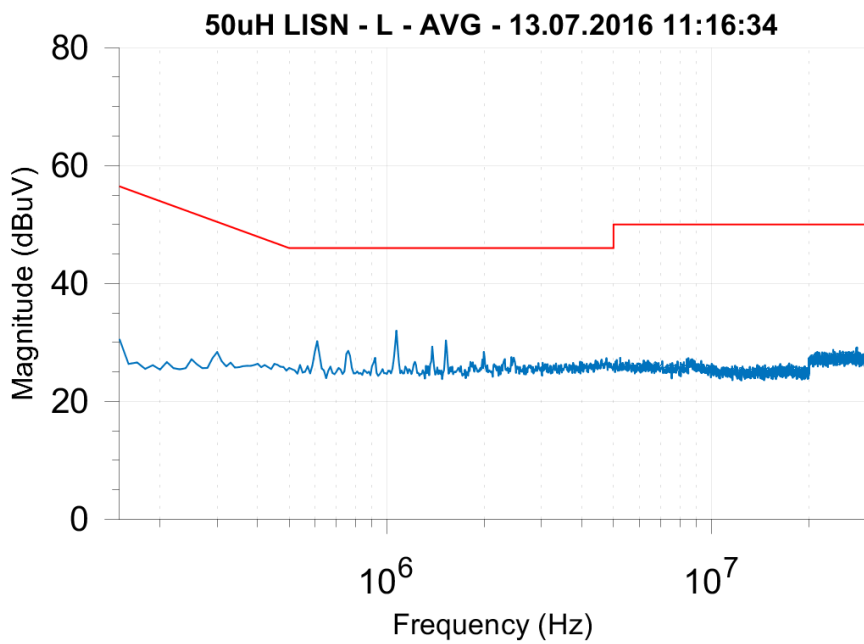




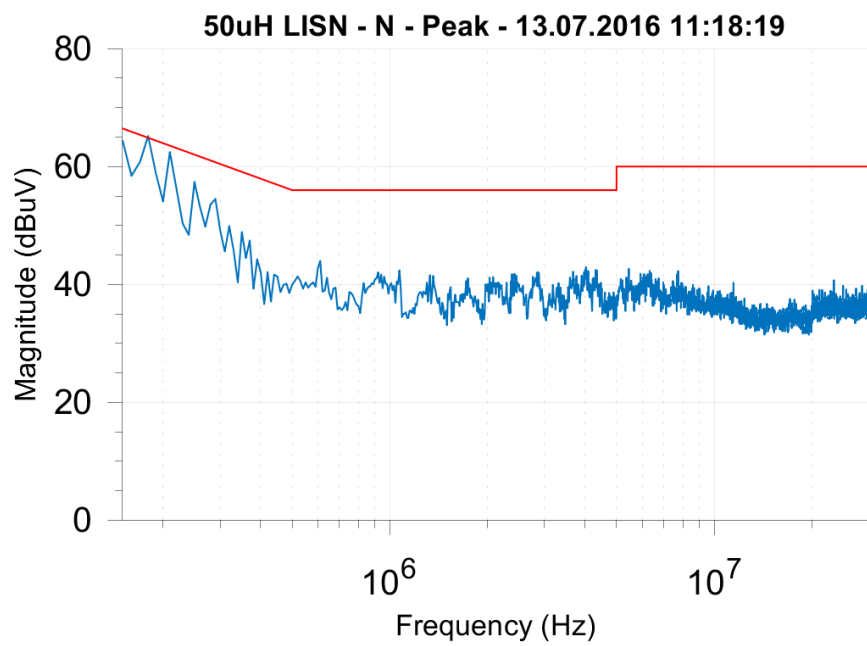
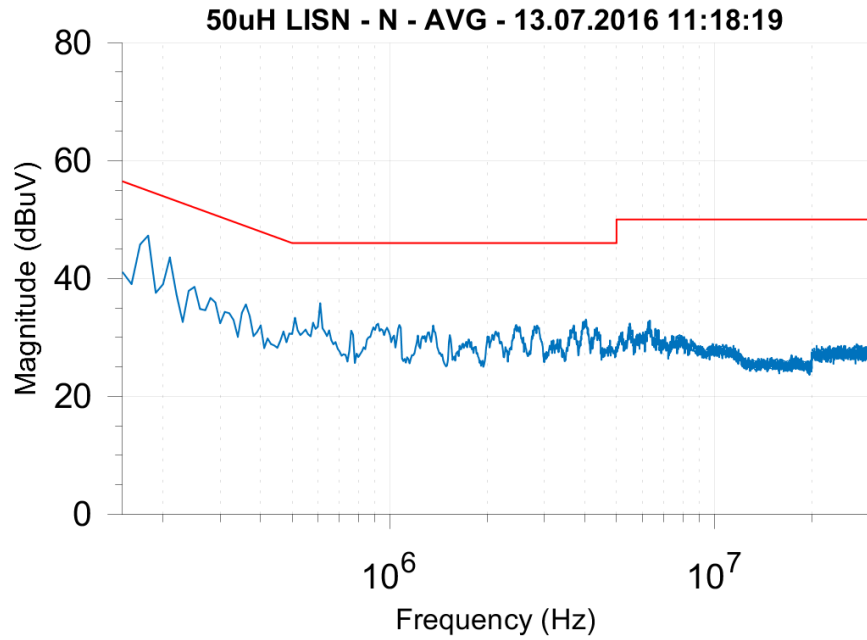
7 Conducted EMI

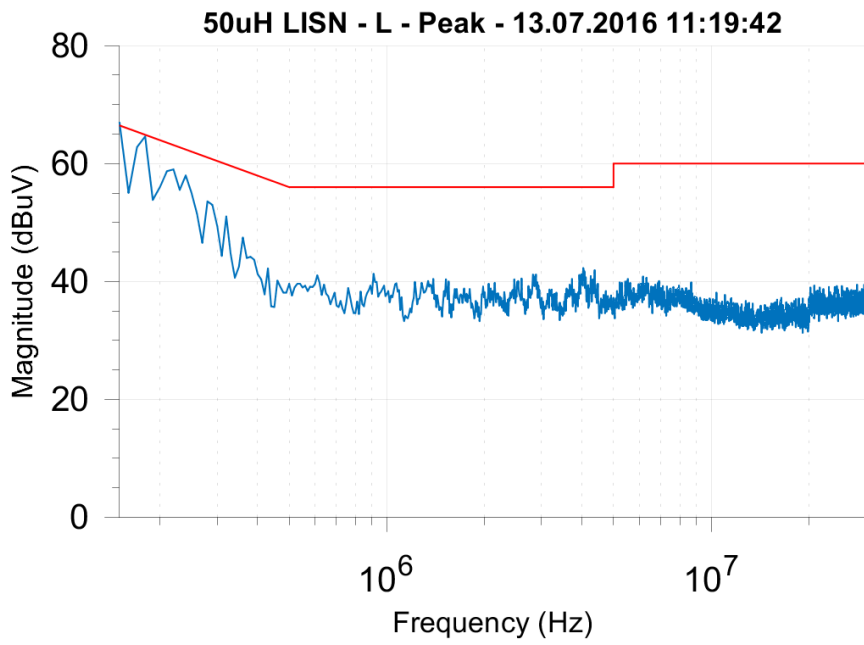
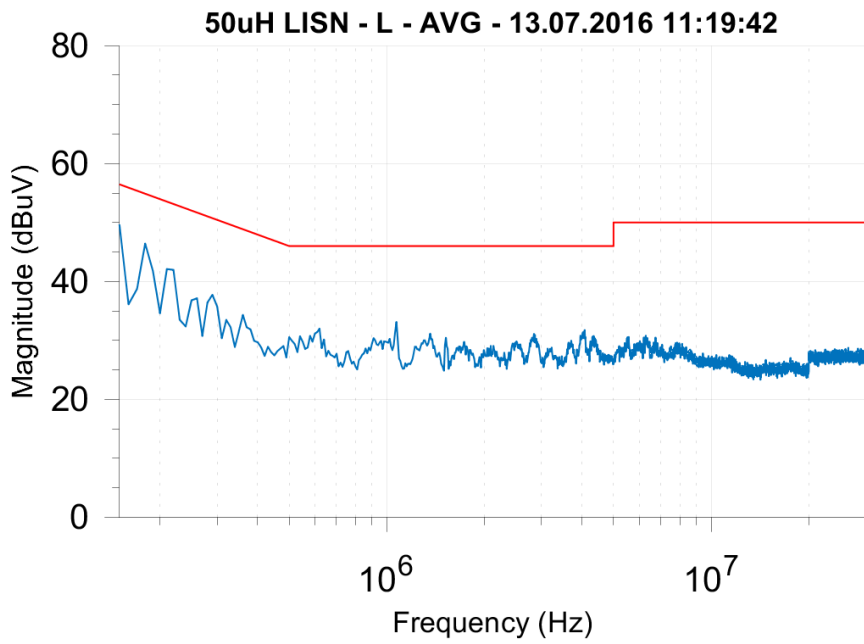
7.1 Output load 0.000A



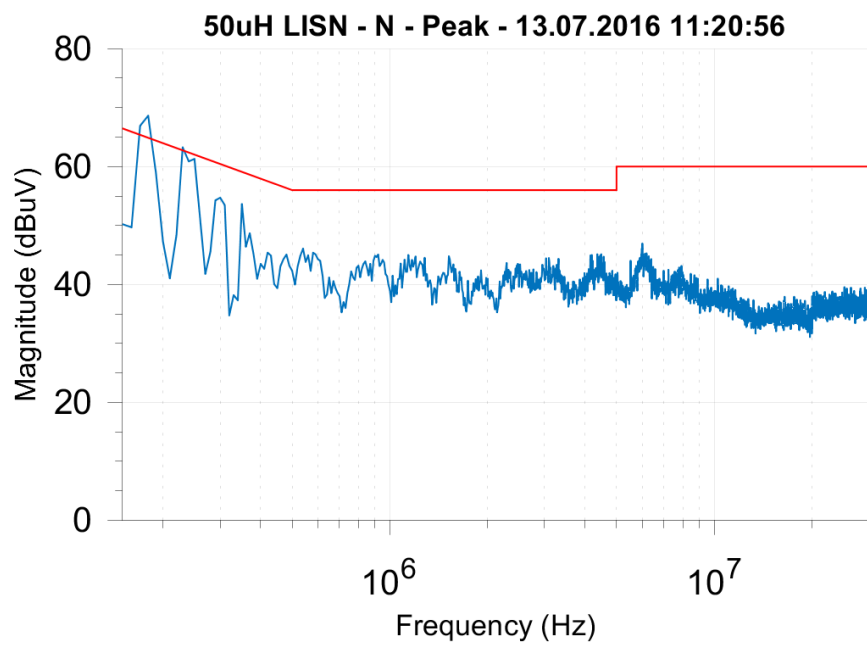
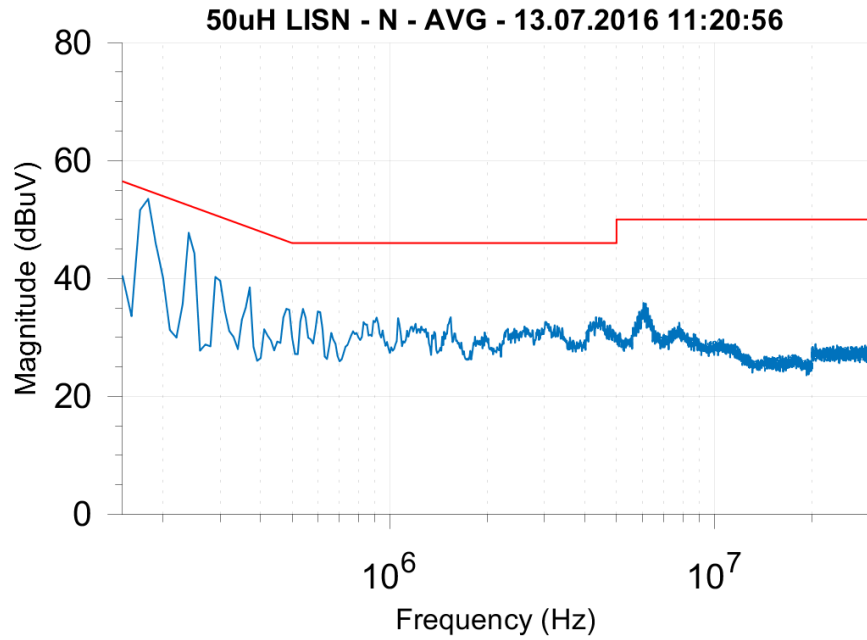


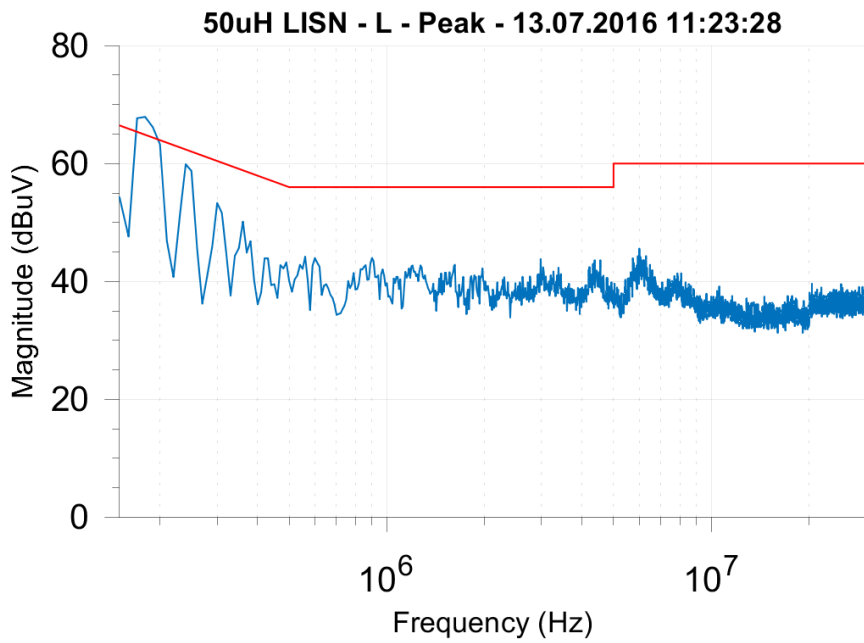
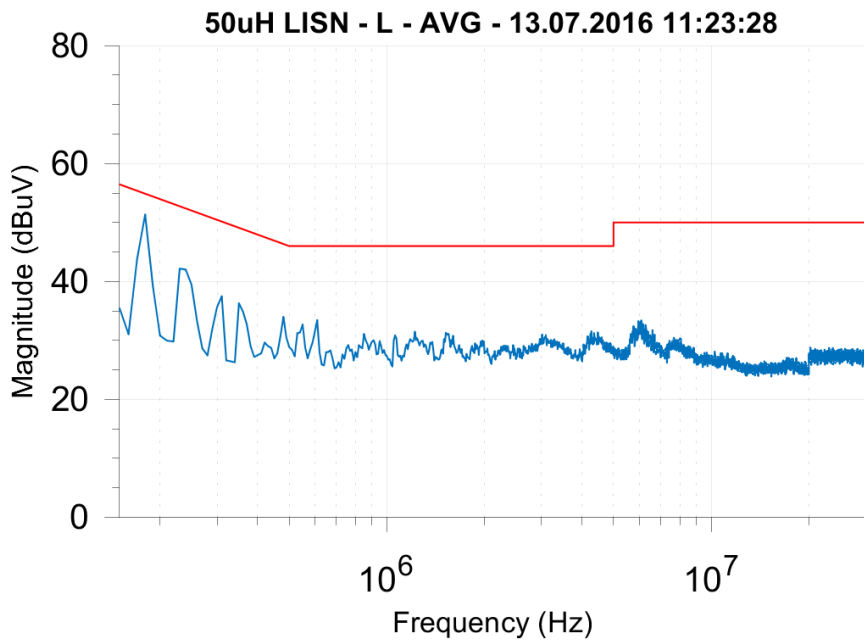
7.2 Output load 0.500A





7.3 Output load 1.000A





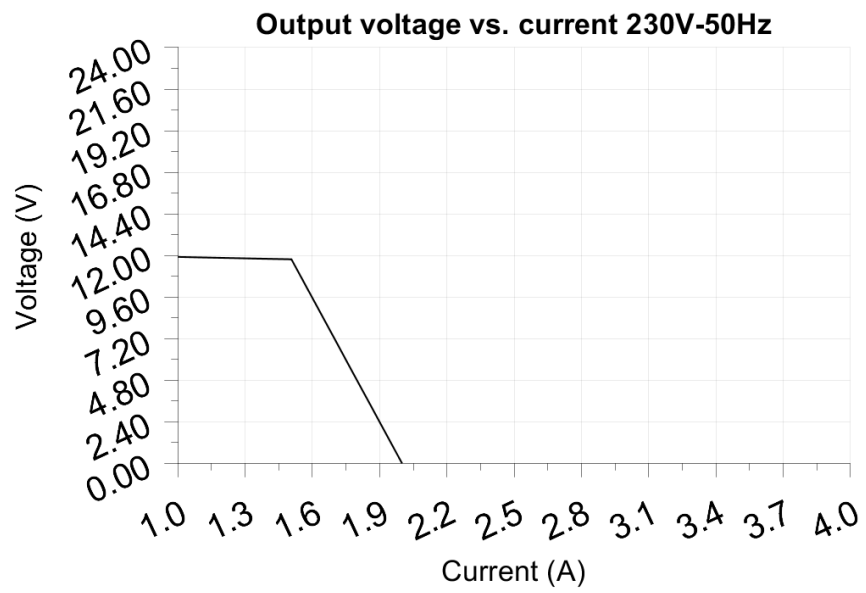
8 Overload testing

Test voltage: 230.00V

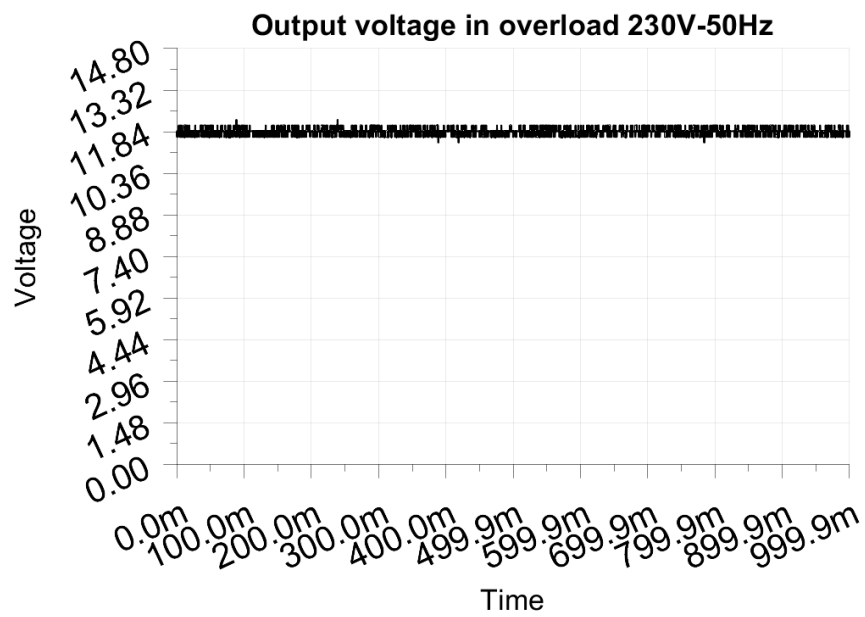
Test Frequency: 50Hz

Threshold: <6.000V

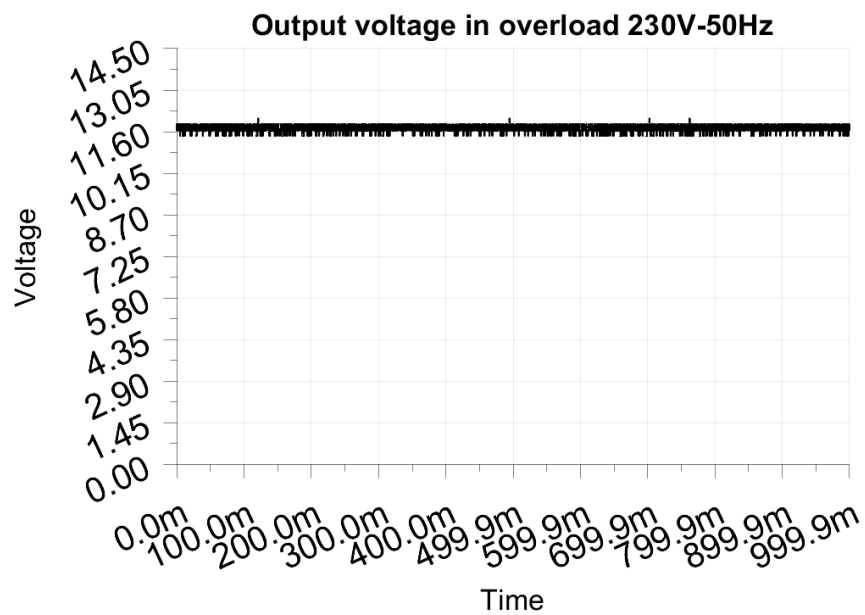
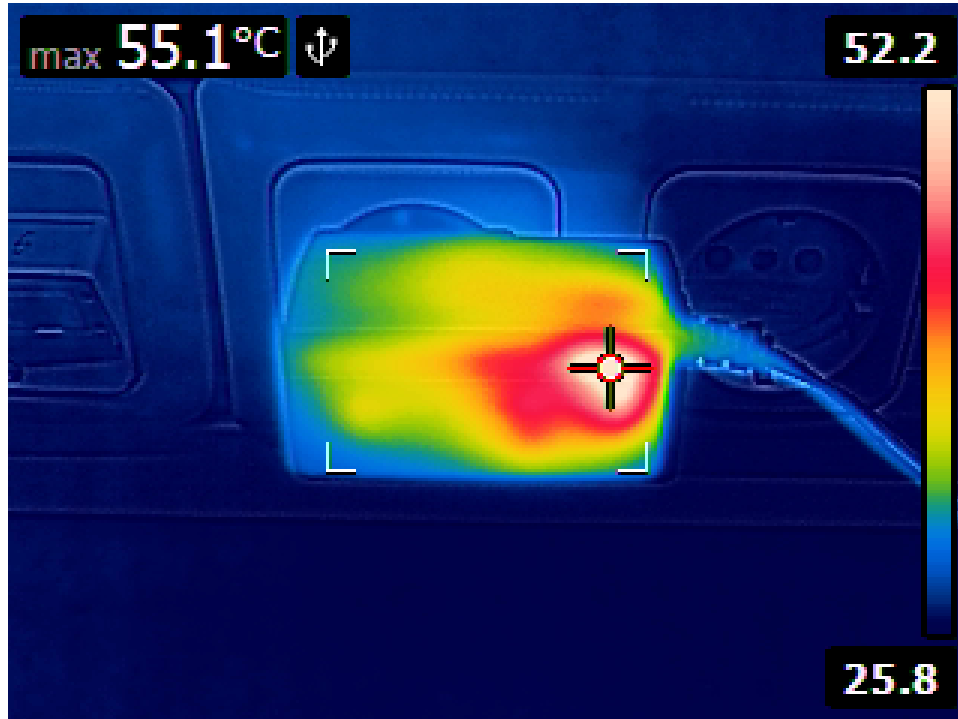
Maximum output current before shutdown: 2.000A



8.1 Output load 1.000A or 100%



8.2 Output load 1.500A or 150%



8.3 Output load 2.000A or 200%

