



develop

PSU test report

Bernhard Woerndl-Aichriedler
bwa@xdevelop.at

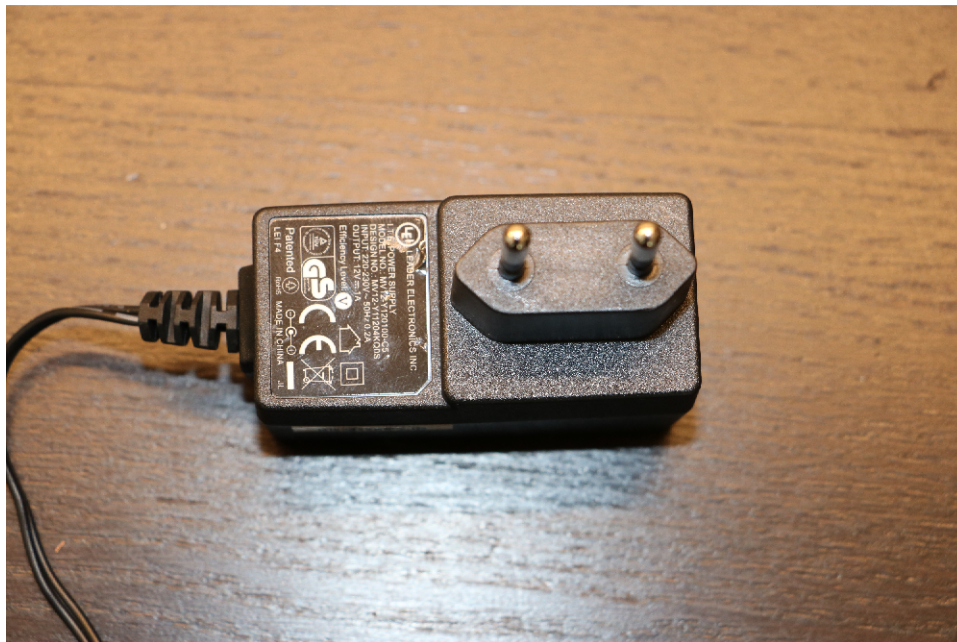
1 Contents

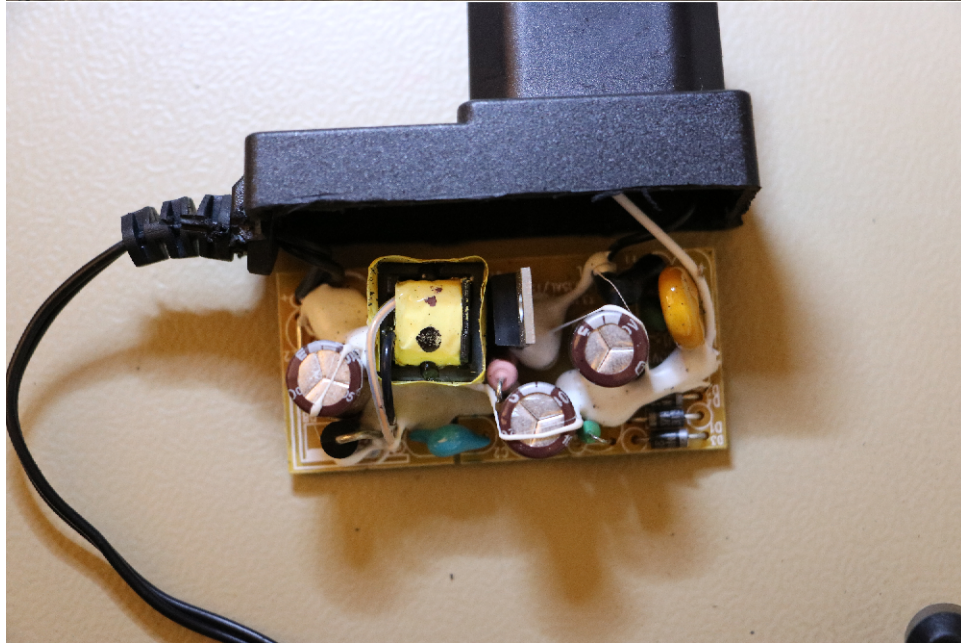
- General information
- Point of operation
- Standby power consumption
- Load testing
- Turn on voltage
- Conducted EMI
- Overload testing

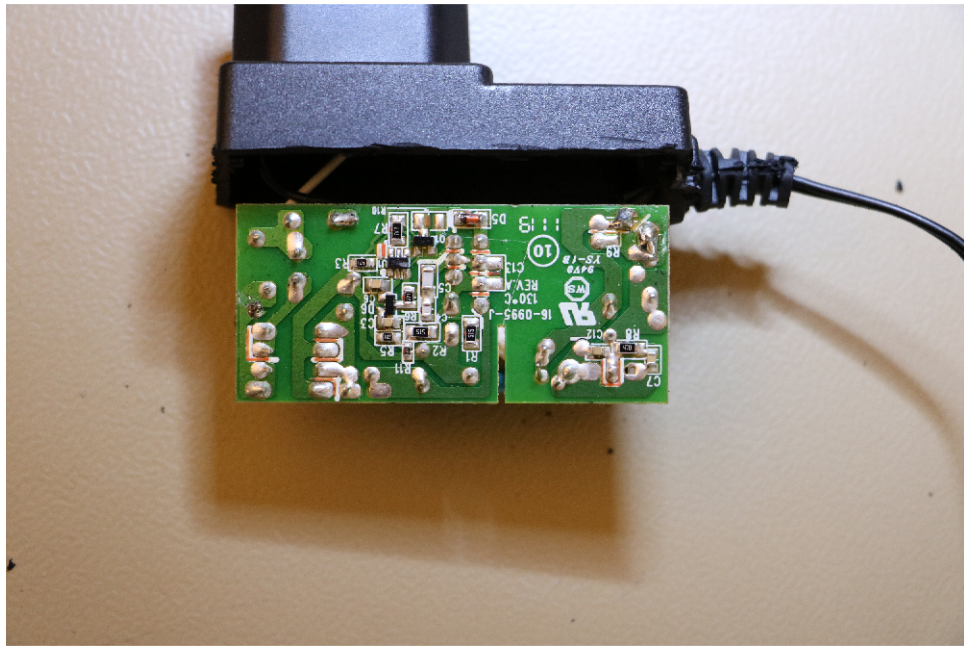
2 General information

Testing the following device

Manufacturer: LEI
Device name: MV12-Y120100C5
Serial number: 5
Nominal voltage: 12.000V
Nominal current: 1.000A
Tester: Bernhard Woerndl-Aichriedler <bwa@xdevelop.at>
Start time: 12-Jul-2016 16:07:22





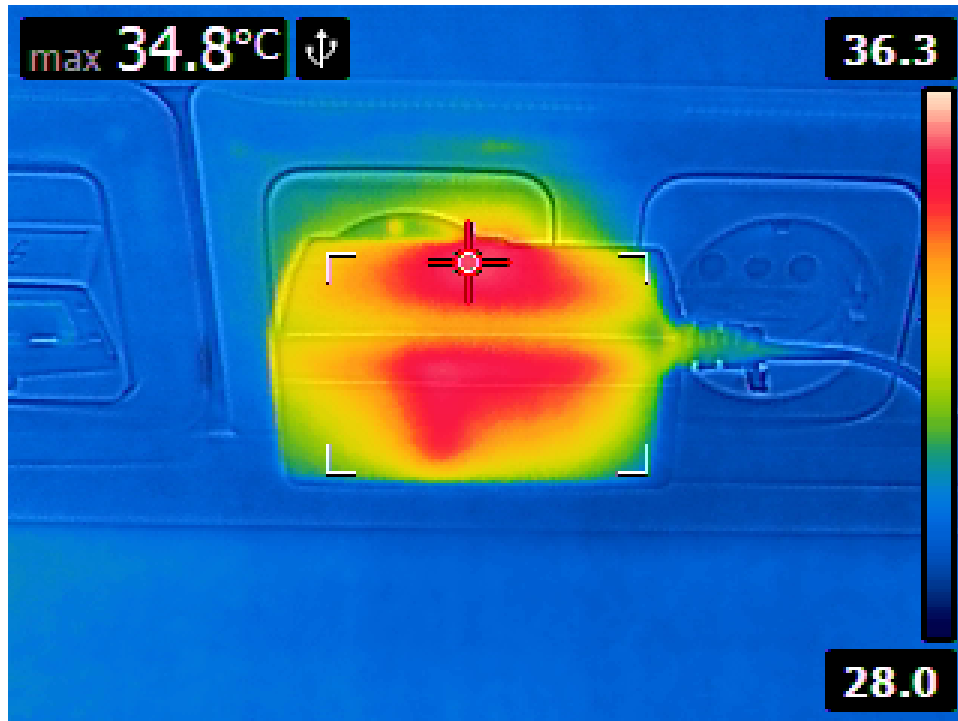


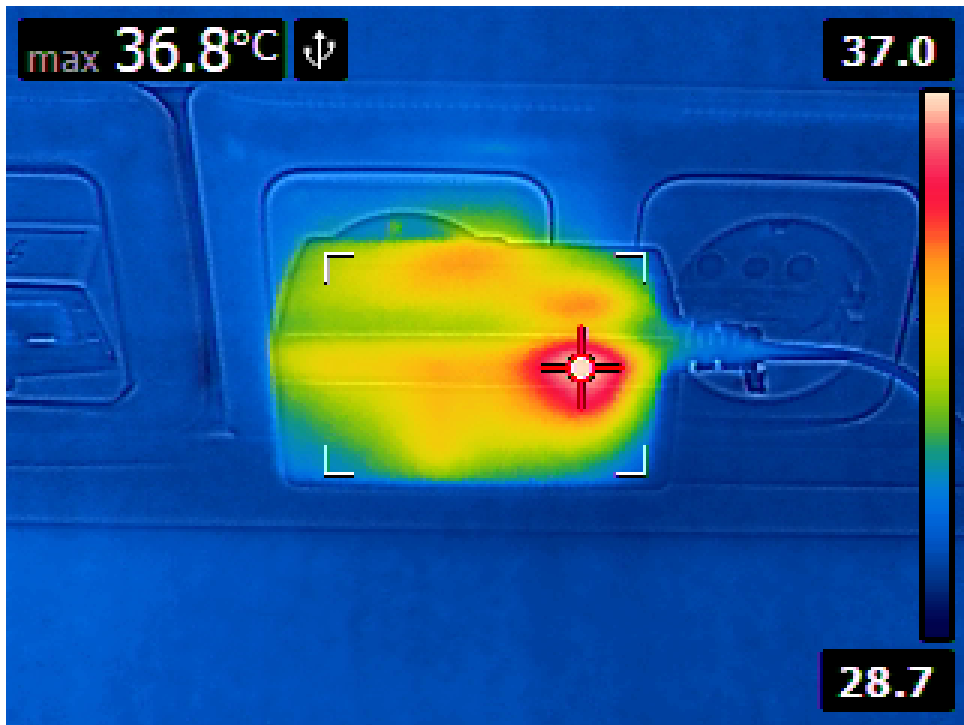
3 Point of operation

The test has been conducted with the following conditions

Voltage/Frequency: 250V-50Hz

Ambient Temperature: 32.40C





4 Standby power consumption

Voltage: 250.68V

Frequency: 50Hz

Current: 0.003405A

P active: 0.158W

P apparent: 0.854VA

P reactive: 0.839VAR

P factor: 0.185

Output voltage: 15.203V



5 Load testing

Characteristics

Voltage: 250.68V

Frequency: 50Hz

Loads: 0.000A to 1.100A

Minimum output voltage: 13.400V

Maximum output voltage: 15.257V

Regulation error absolute: -1.400V/+3.257V

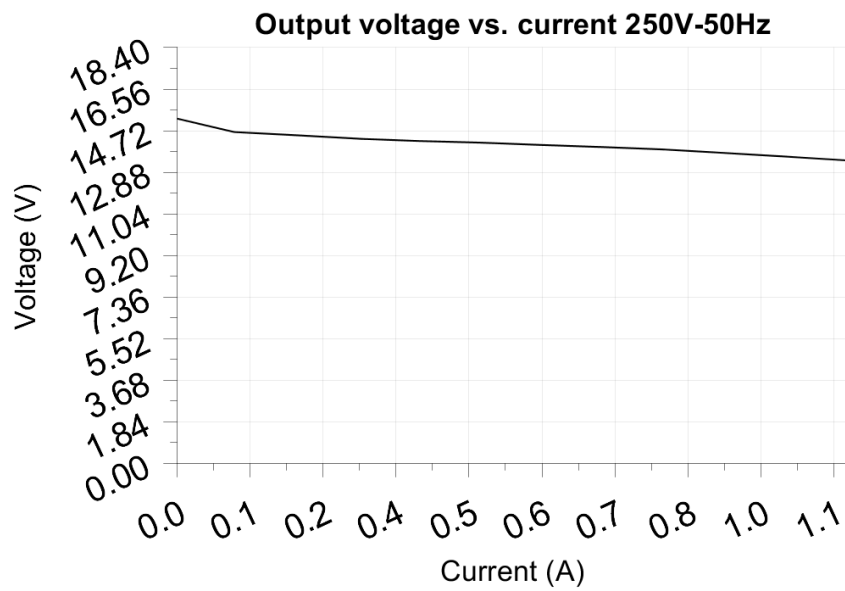
Regulation error relative: -11.7%/+27.1%

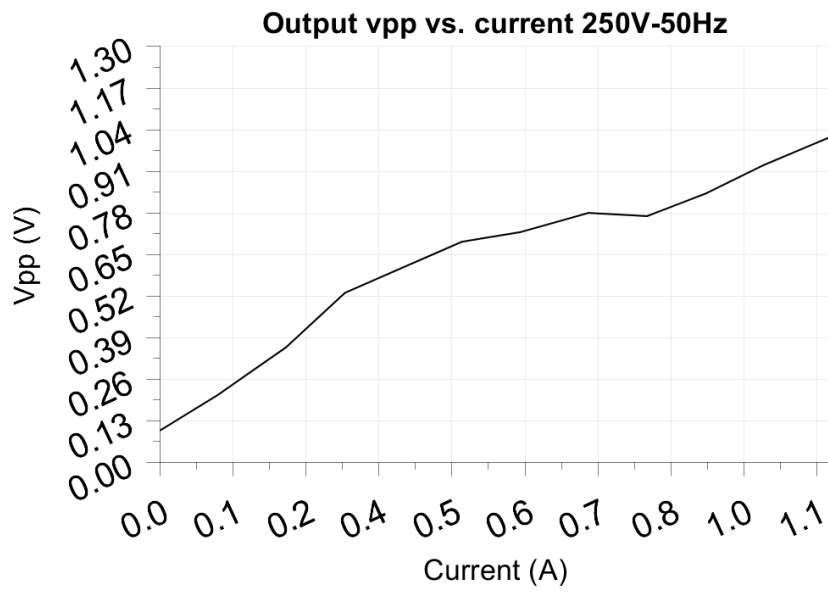
Vpp ripple&noise absolute: 1.020V

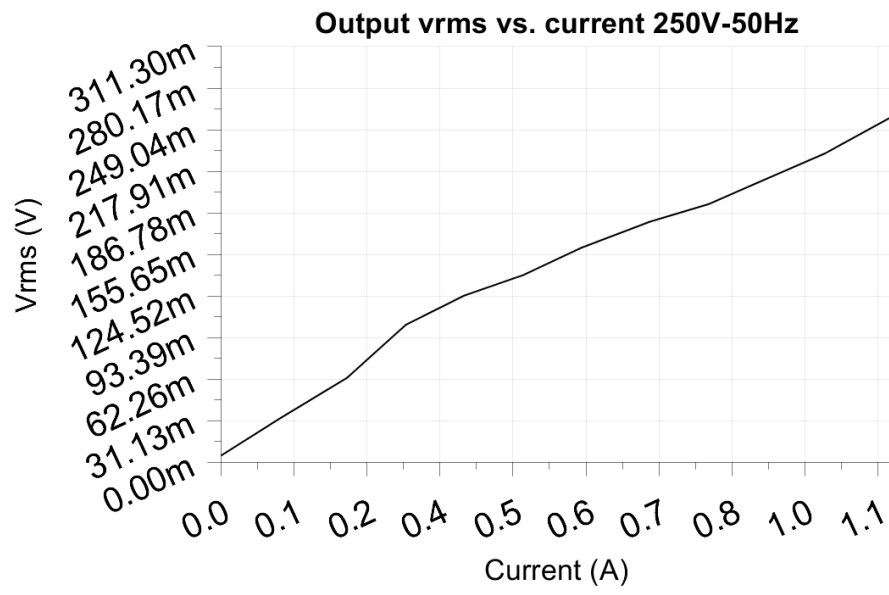
Vpp ripple&noise relative: 8.5%

RMS ripple&noise absolute: 0.259V

RMS ripple&noise relative: 2.2%







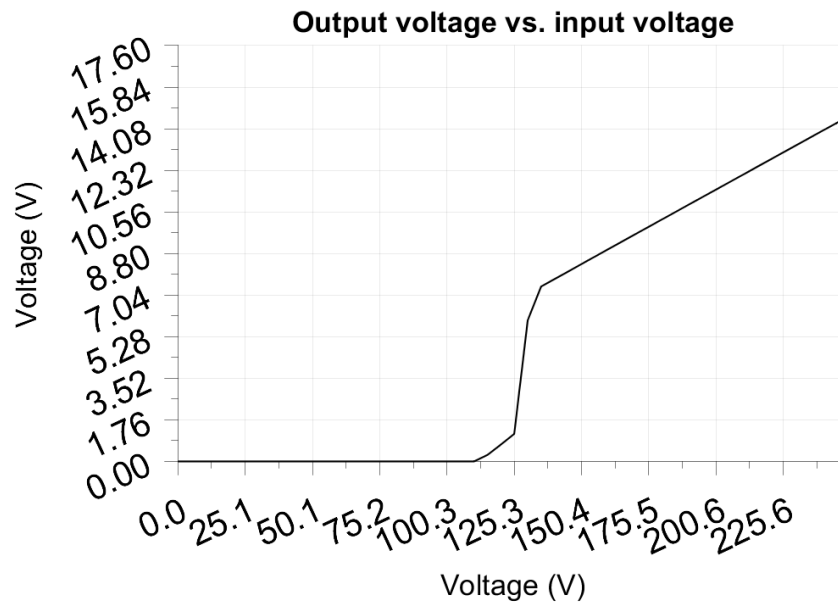
6 Turn on voltage

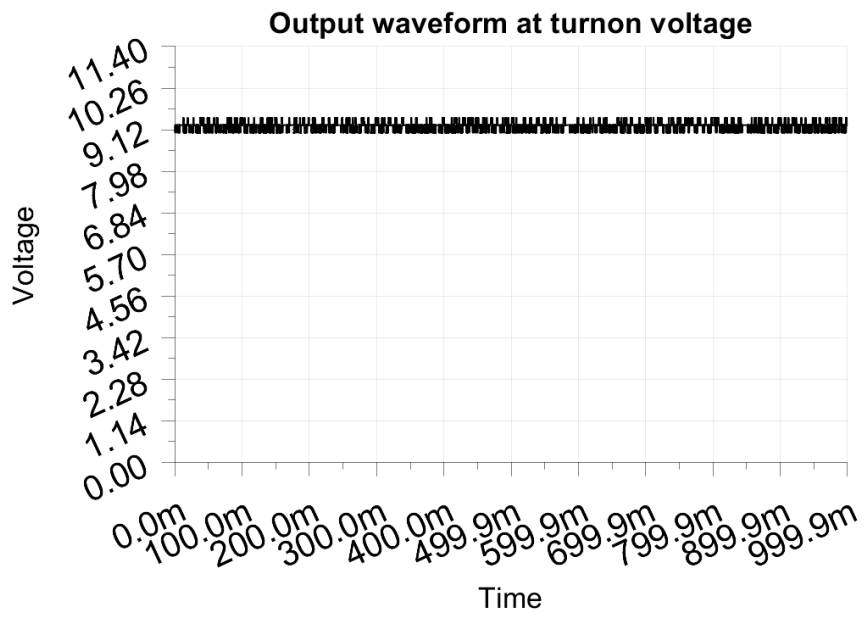
Testing when the PSU enables it's output

Test load: 0.100A
Test Frequency: 50Hz
Threshold: 9.000V

Turn-on voltage: 165.00V

Output voltage: 9.298V





7 Conducted EMI

No EMI test results

8 Overload testing

No overload test results