



develop

PSU test report

Bernhard Woerndl-Aichriedler
bwa@xdevelop.at

1 Contents

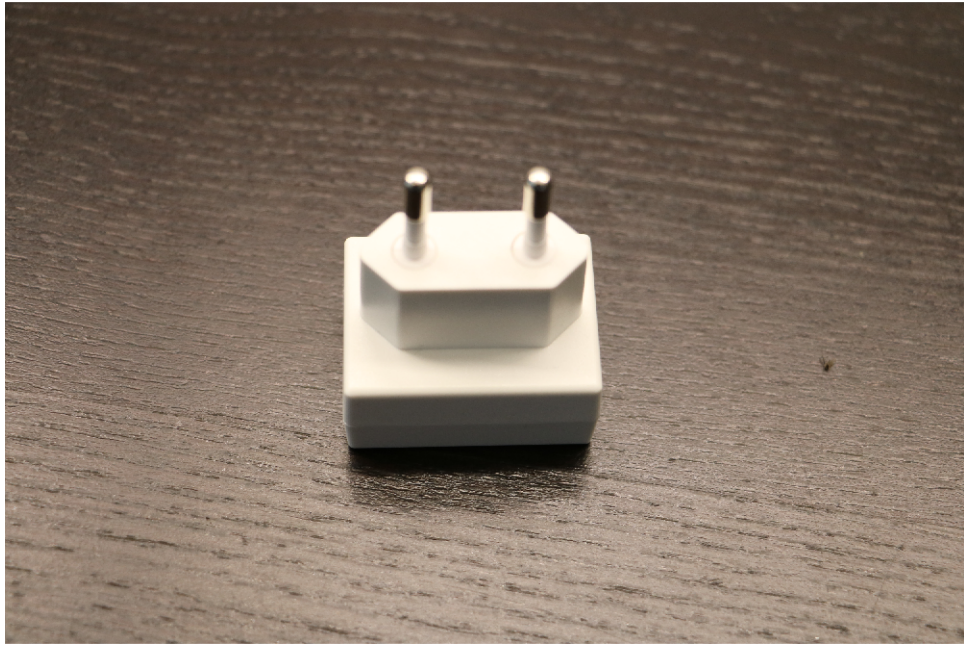
- General information
- Point of operation
- Standby power consumption
- Load testing
- Turn on voltage
- Conducted EMI
- Overload testing

2 General information

Testing the following device

Manufacturer: MeanWell
Device name: GS05E-USB
Serial number: 1
Nominal voltage: 5.000V
Nominal current: 1.000A
Tester: Bernhard Woerndl-Aichriedler <bwa@xdevelop.at>
Start time: 13-Jul-2016 11:39:47





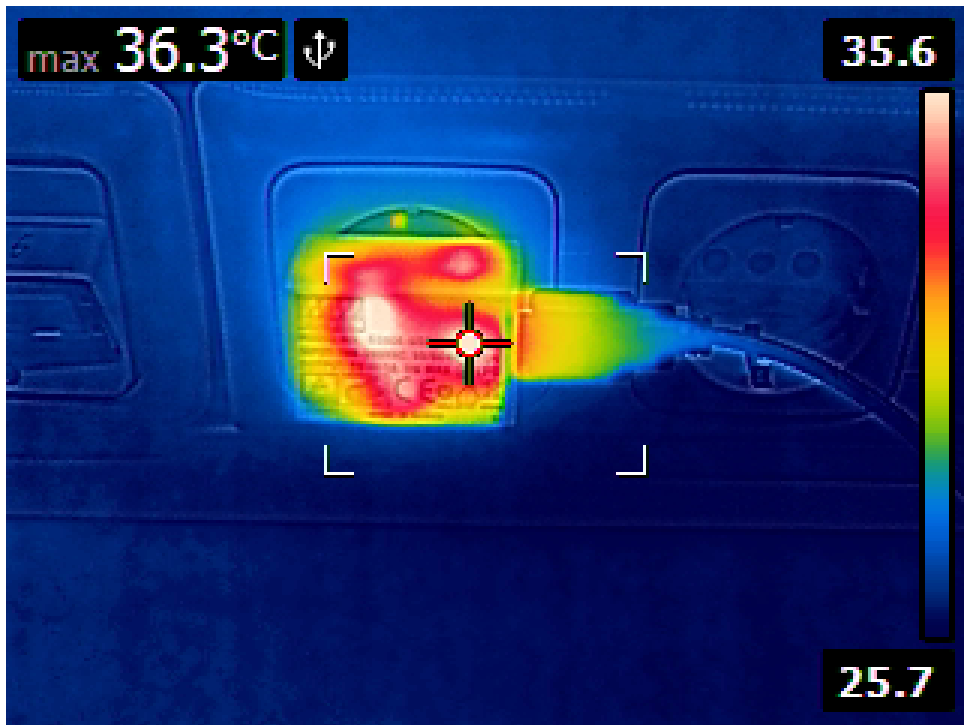
3 Point of operation

The test has been conducted with the following conditions

Voltage/Frequency: 210V-50Hz

Ambient Temperature: 28.50C





4 Standby power consumption

Voltage: 210.59V

Frequency: 50Hz

Current: 0.002776A

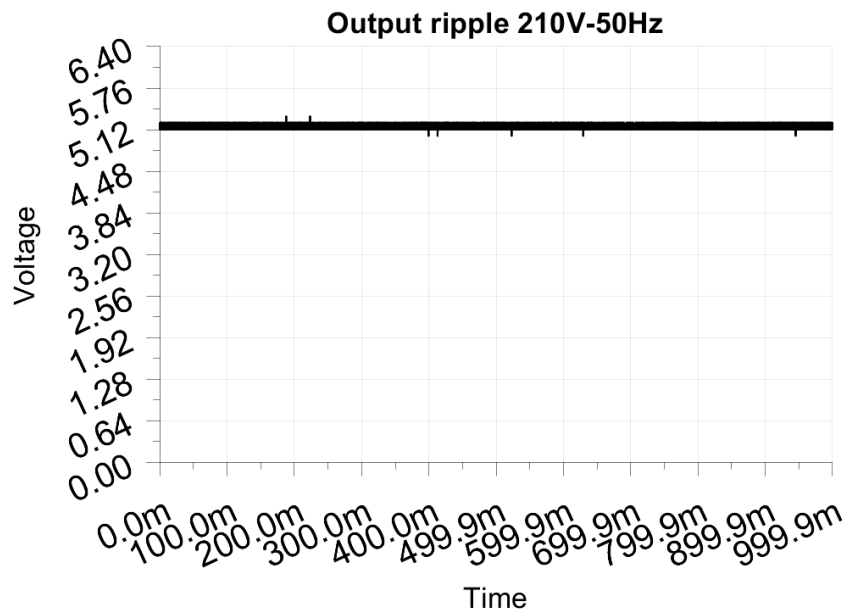
P active: 0.118W

P apparent: 0.597VA

P reactive: 0.585VAR

P factor: 0.198

Output voltage: 5.218V



5 Load testing

Characteristics

Voltage: 210.61V

Frequency: 50Hz

Loads: 0.000A to 1.000A

Minimum output voltage: 4.653V

Maximum output voltage: 5.218V

Regulation error absolute: -0.347V/+0.218V

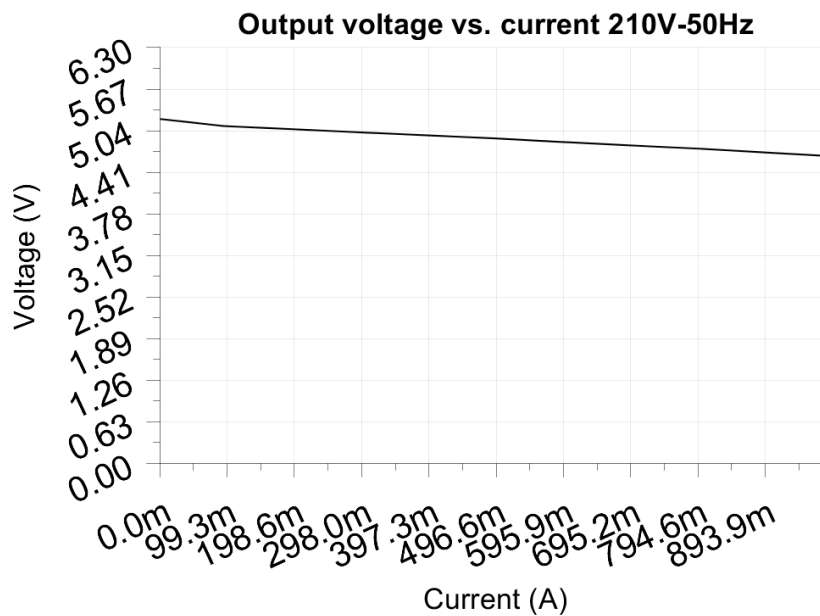
Regulation error relative: -6.9%/+4.4%

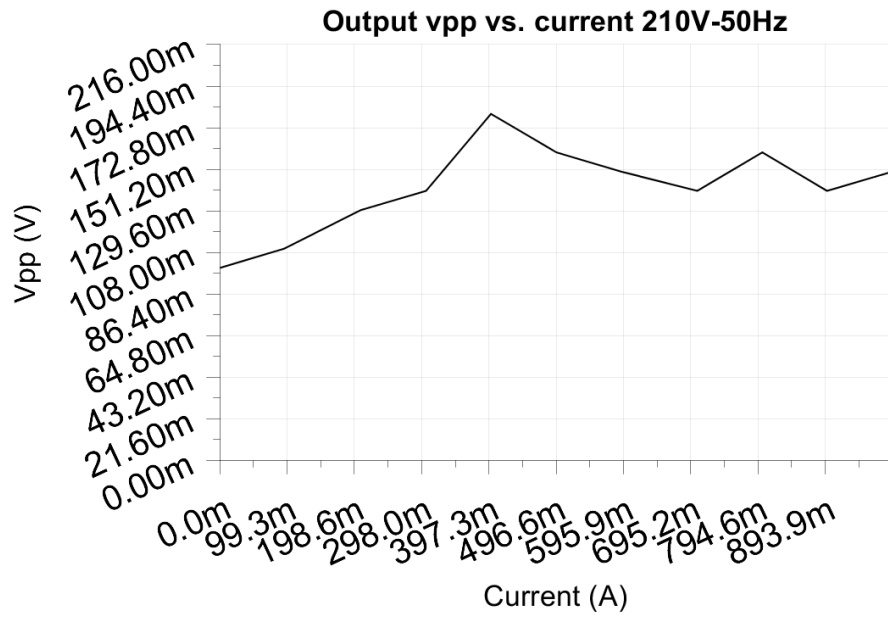
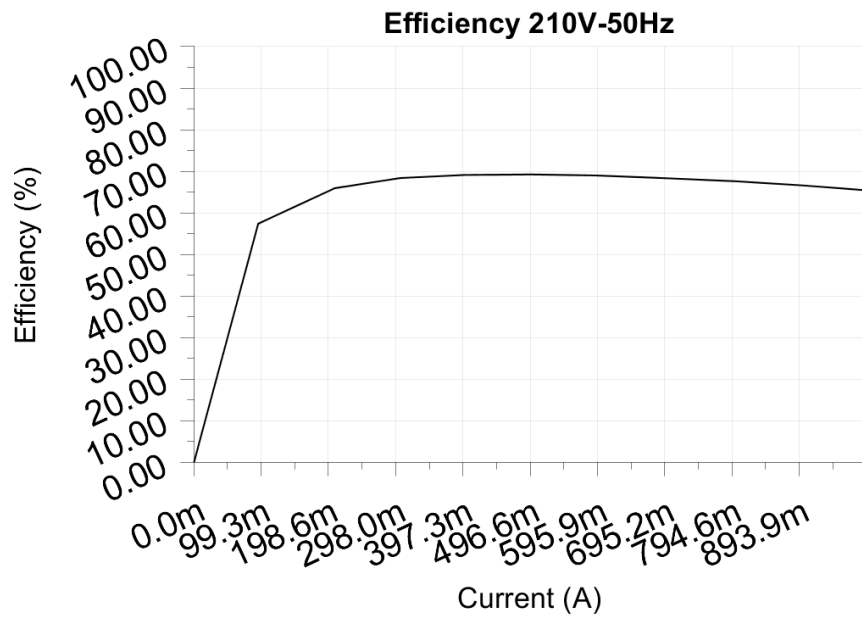
Vpp ripple&noise absolute: 0.180V

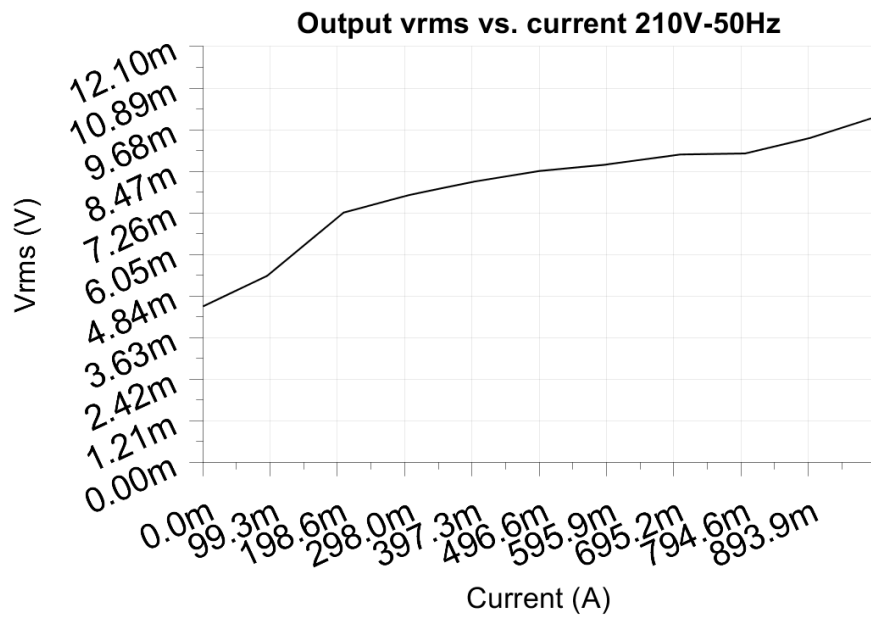
Vpp ripple&noise relative: 3.6%

RMS ripple&noise absolute: 0.010V

RMS ripple&noise relative: 0.2%







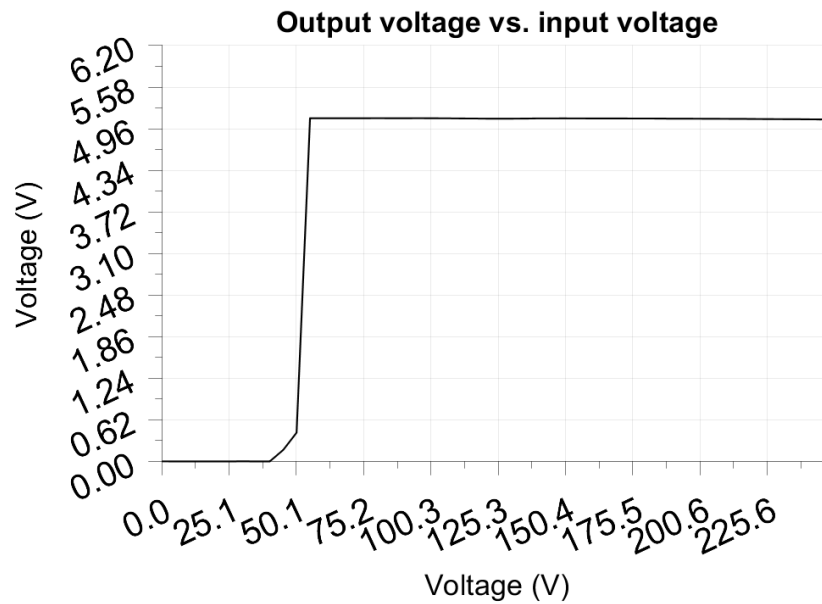
6 Turn on voltage

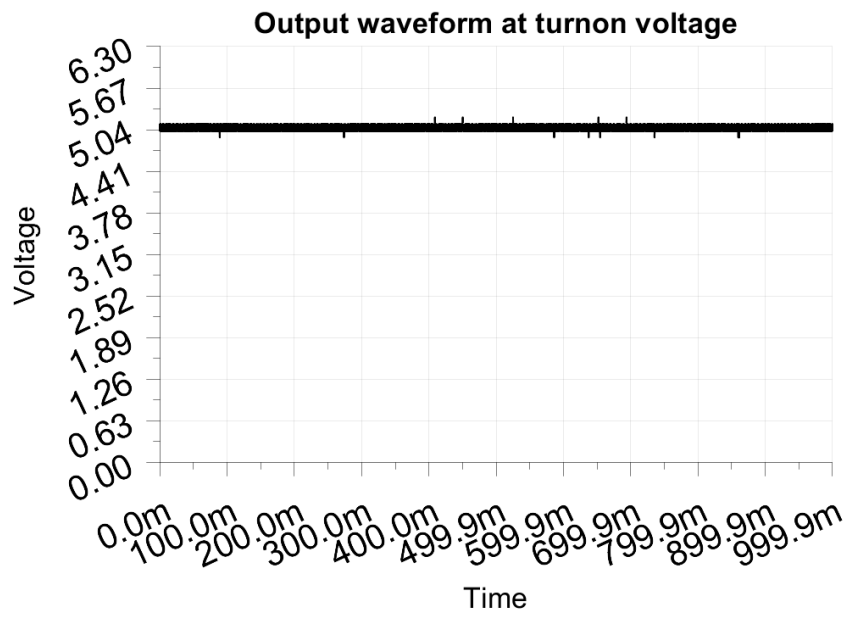
Testing when the PSU enables it's output

Test load: 0.100A
Test Frequency: 50Hz
Threshold: 3.750V

Turn-on voltage: 55.00V

Output voltage: 5.116V





7 Conducted EMI

No EMI test results

8 Overload testing

No overload test results