



develop

PSU test report

Bernhard Woerndl-Aichriedler
bwa@xdevelop.at

1 Contents

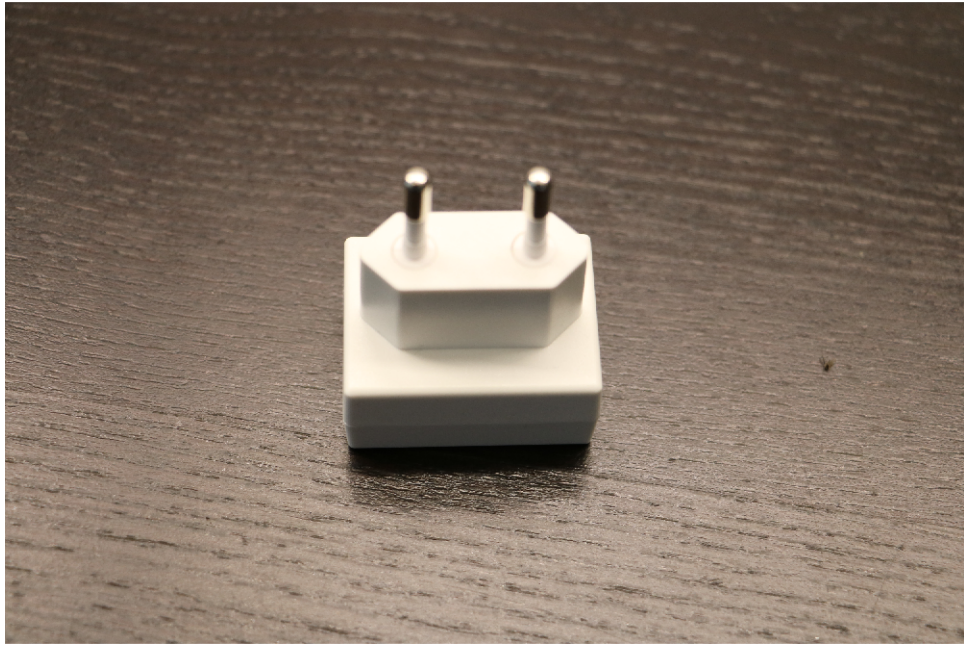
- General information
- Point of operation
- Standby power consumption
- Load testing
- Turn on voltage
- Conducted EMI
- Overload testing

2 General information

Testing the following device

Manufacturer: MeanWell
Device name: GS05E-USB
Serial number: 1
Nominal voltage: 5.000V
Nominal current: 1.000A
Tester: Bernhard Woerndl-Aichriedler <bwa@xdevelop.at>
Start time: 13-Jul-2016 11:39:47





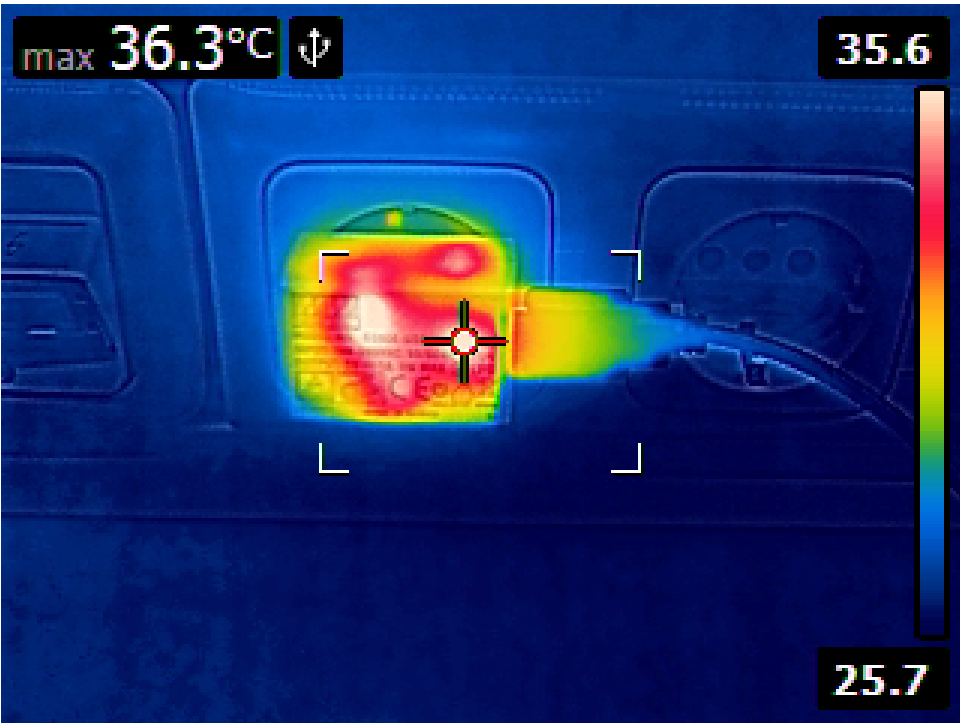
3 Point of operation

The test has been conducted with the following conditions

Voltage/Frequency: 230V-50Hz

Ambient Temperature: 28.50C





4 Standby power consumption

Voltage: 230.62V

Frequency: 50Hz

Current: 0.003162A

P active: 0.142W

P apparent: 0.729VA

P reactive: 0.715VAR

P factor: 0.194

Output voltage: 5.214V



5 Load testing

Characteristics

Voltage: 230.63V

Frequency: 50Hz

Loads: 0.000A to 1.000A

Minimum output voltage: 4.645V

Maximum output voltage: 5.278V

Regulation error absolute: -0.355V/+0.278V

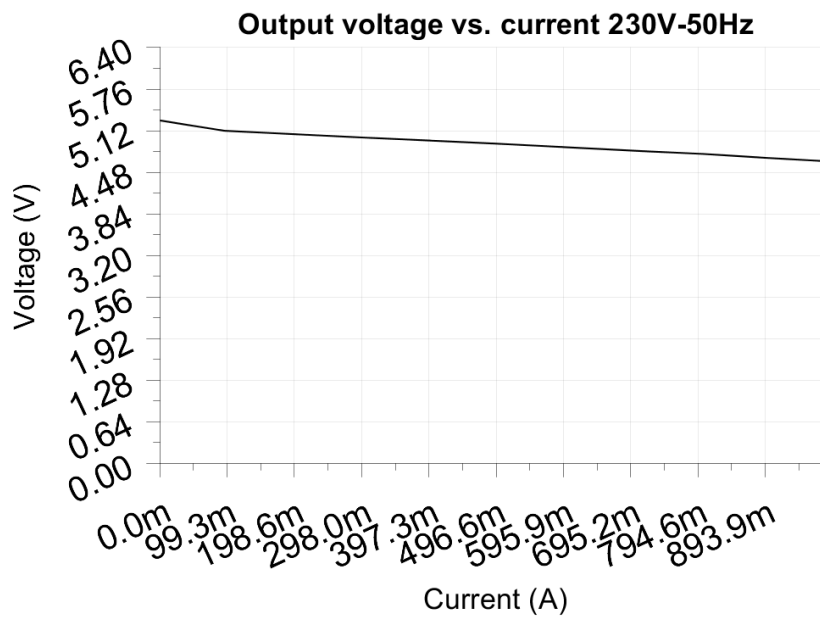
Regulation error relative: -7.1%/+5.6%

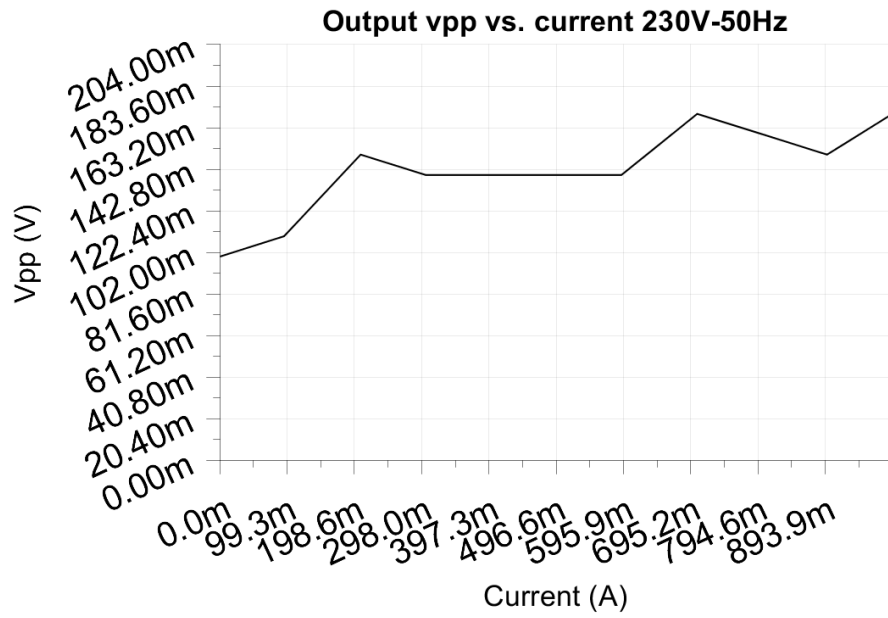
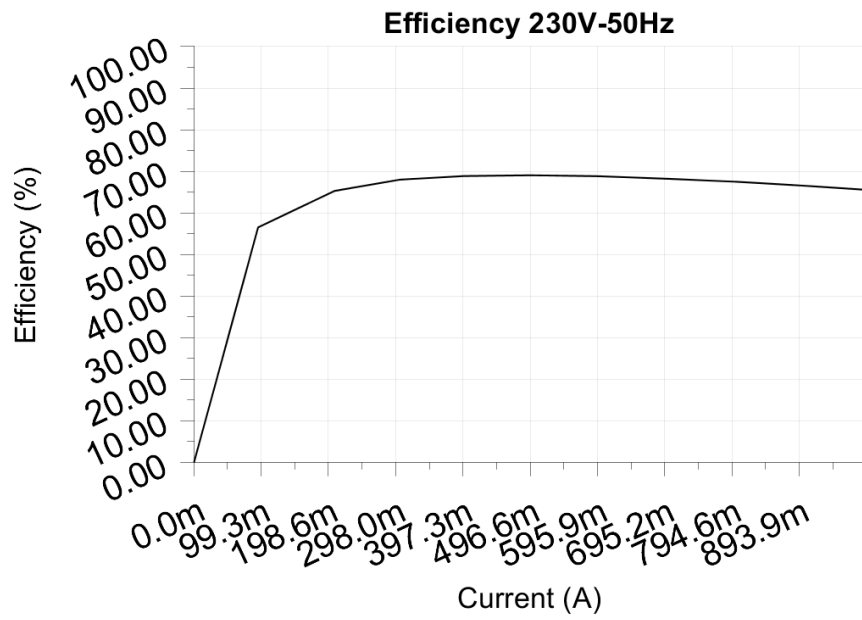
Vpp ripple&noise absolute: 0.170V

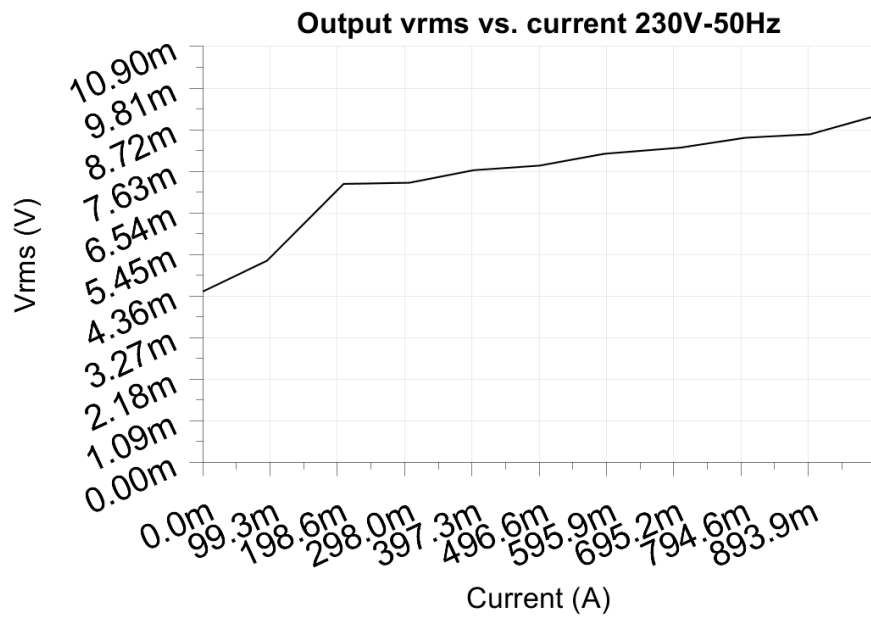
Vpp ripple&noise relative: 3.4%

RMS ripple&noise absolute: 0.009V

RMS ripple&noise relative: 0.2%







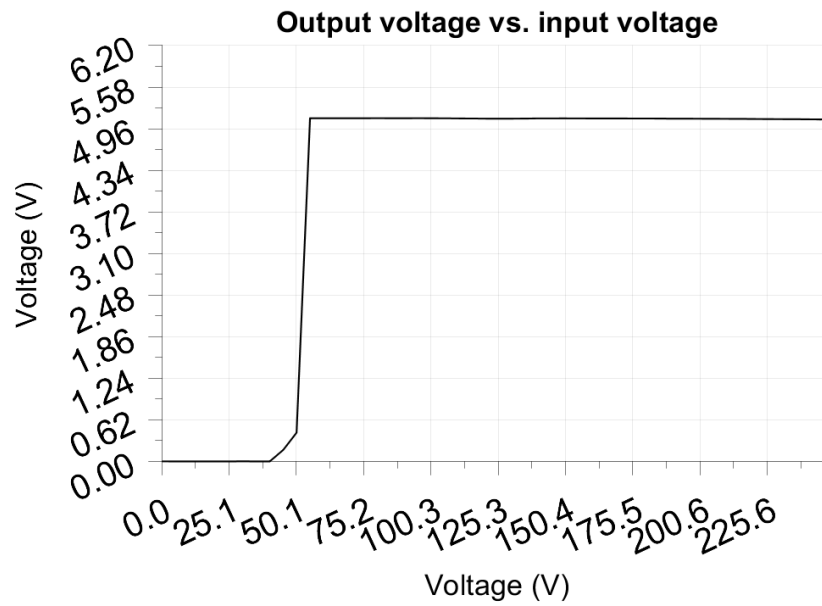
6 Turn on voltage

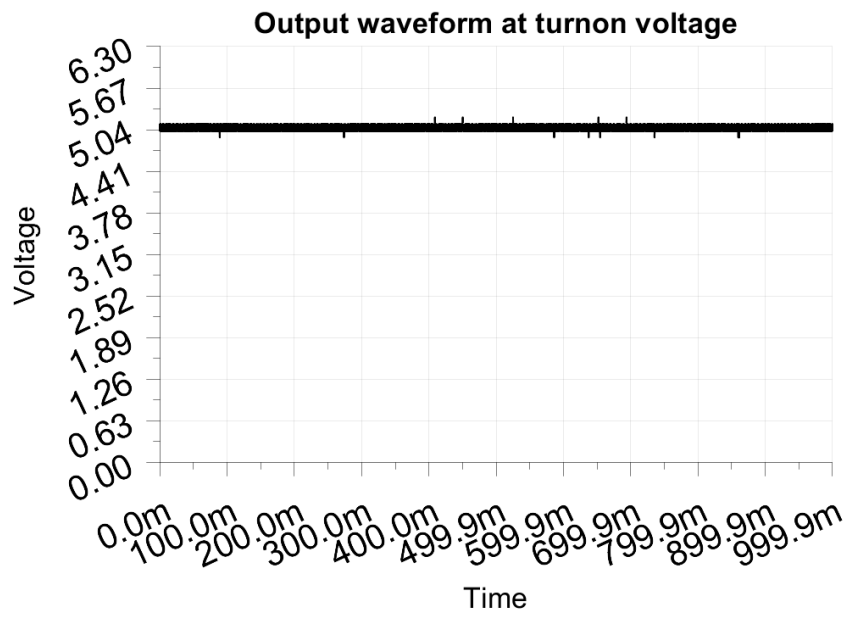
Testing when the PSU enables it's output

Test load: 0.100A
Test Frequency: 50Hz
Threshold: 3.750V

Turn-on voltage: 55.00V

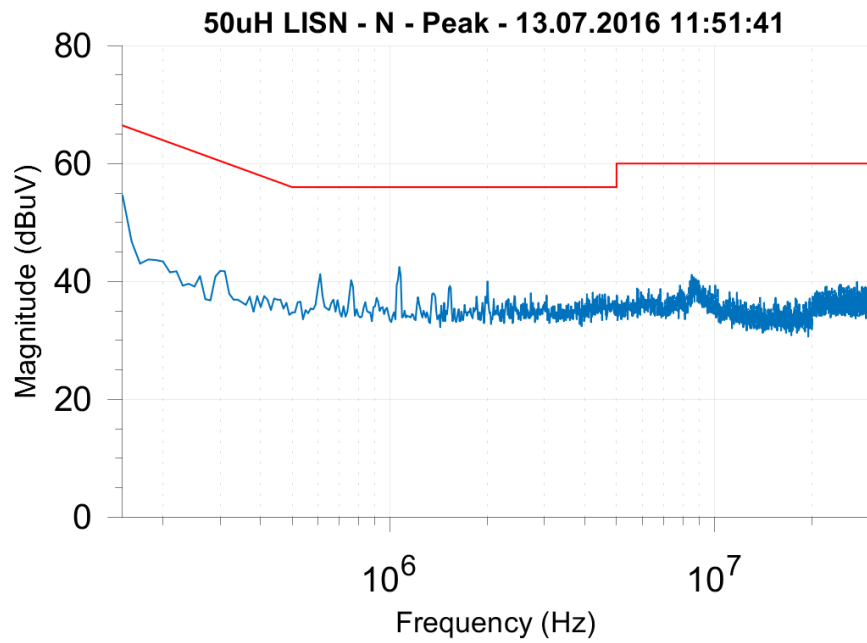
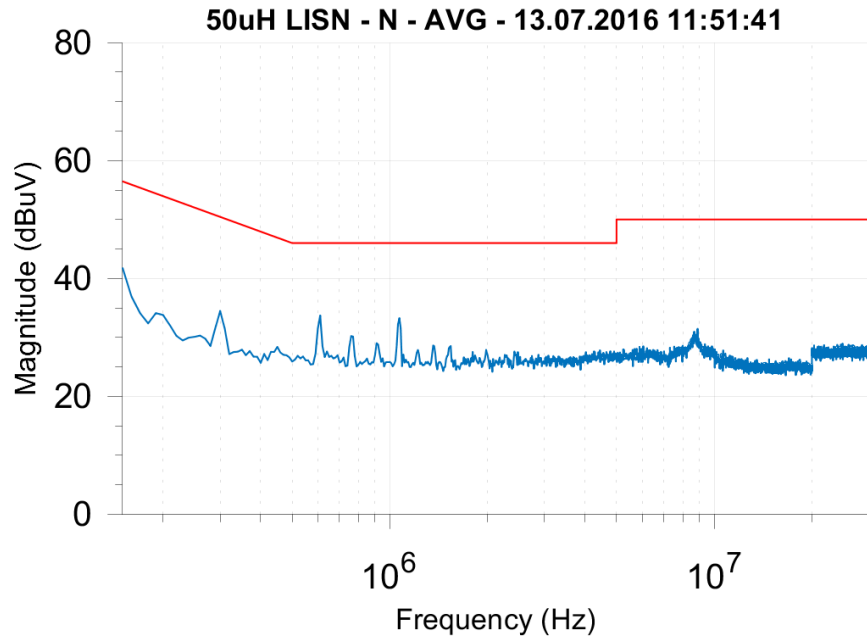
Output voltage: 5.116V

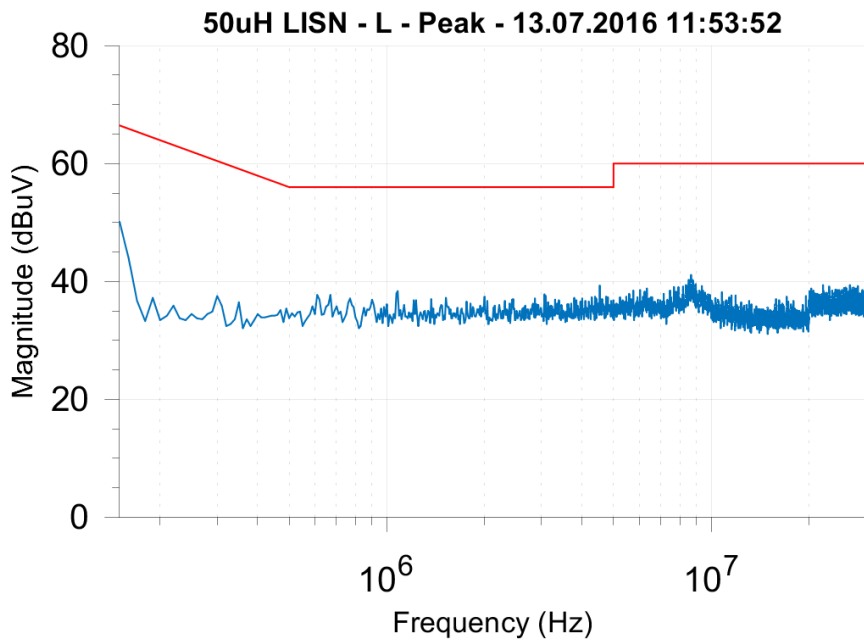
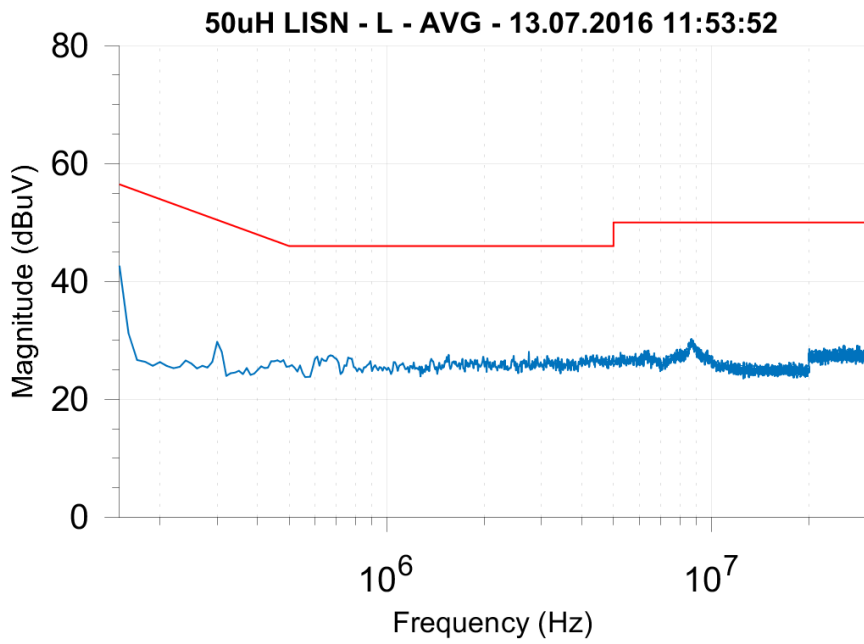




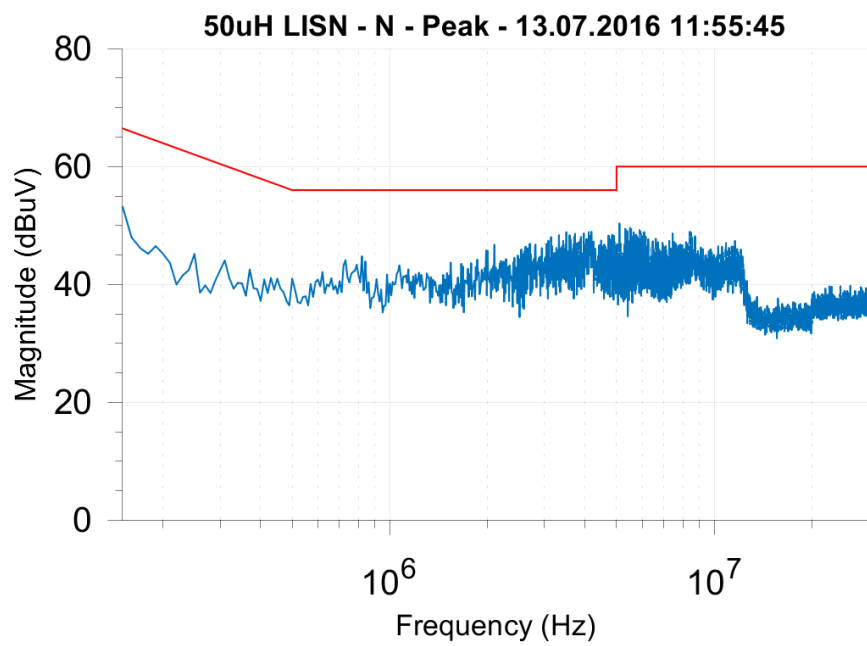
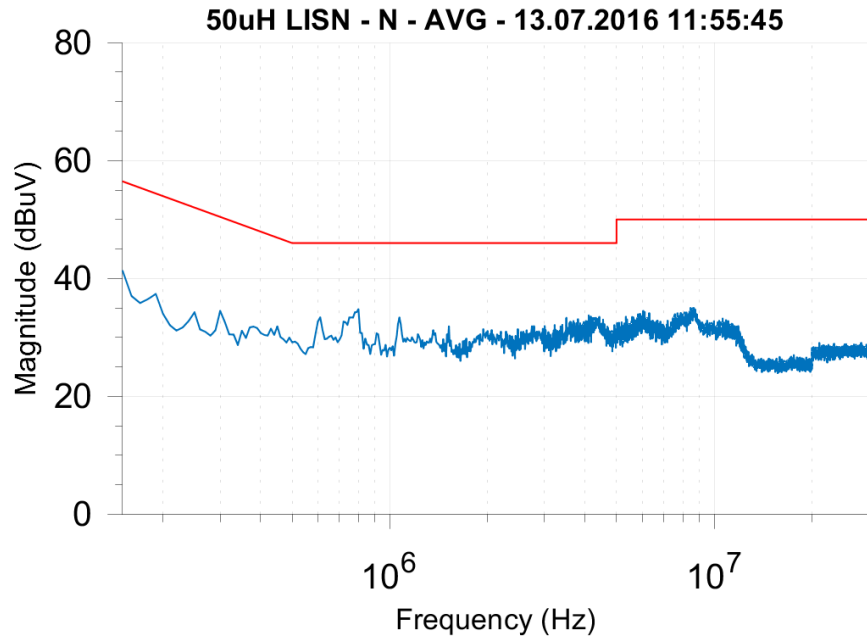
7 Conducted EMI

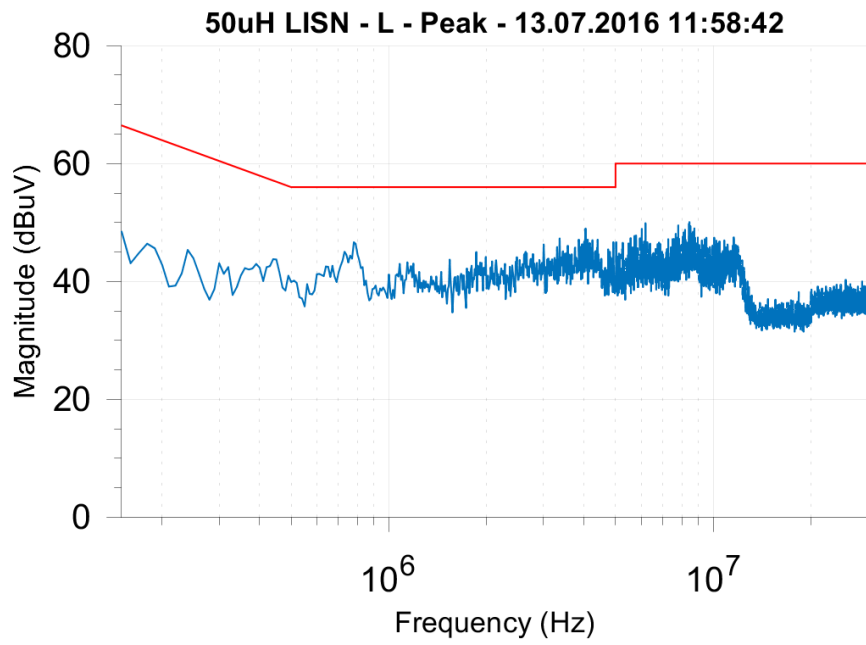
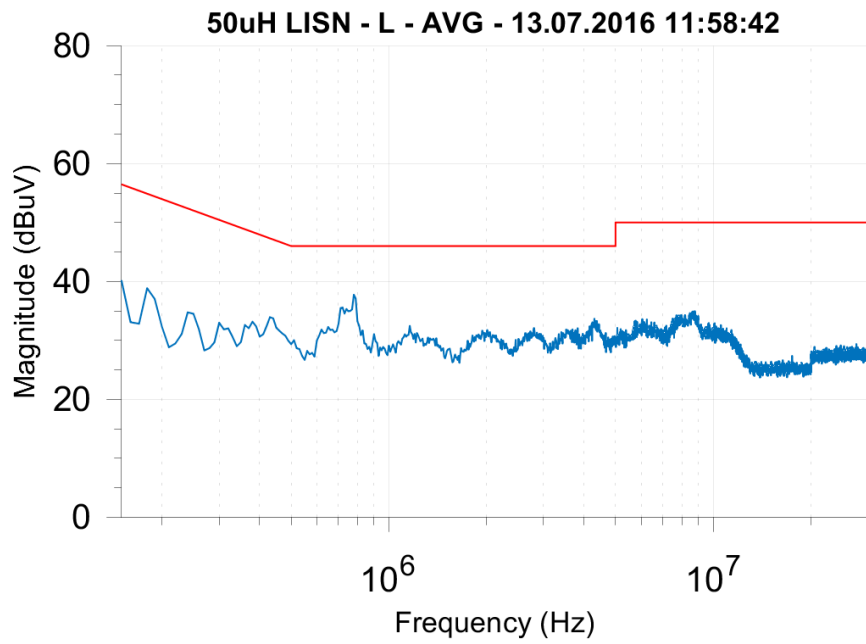
7.1 Output load 0.000A



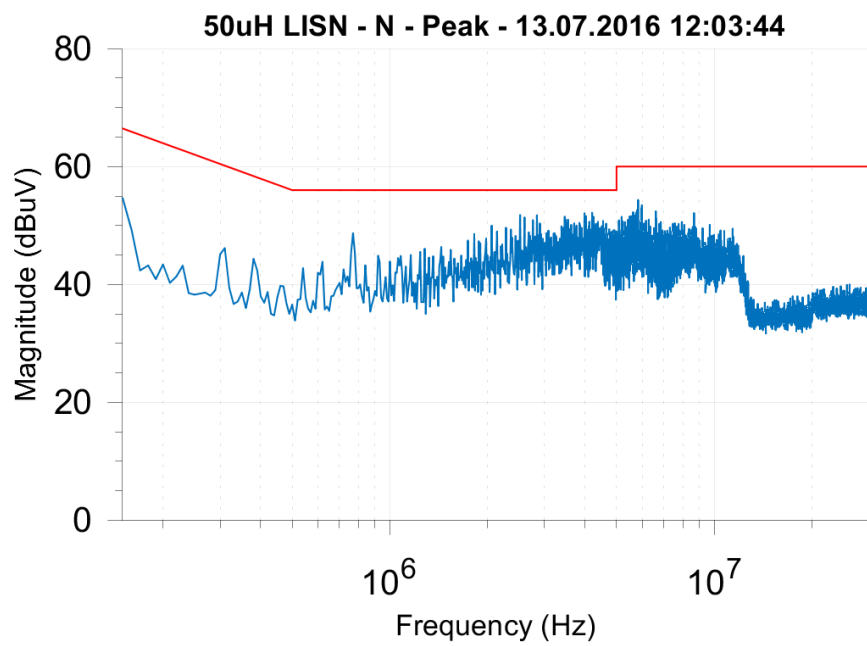
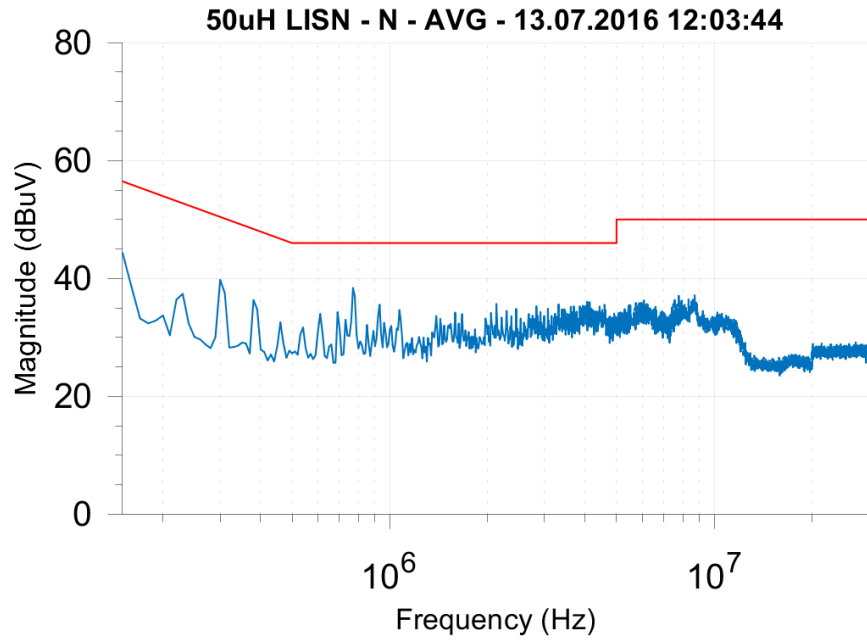


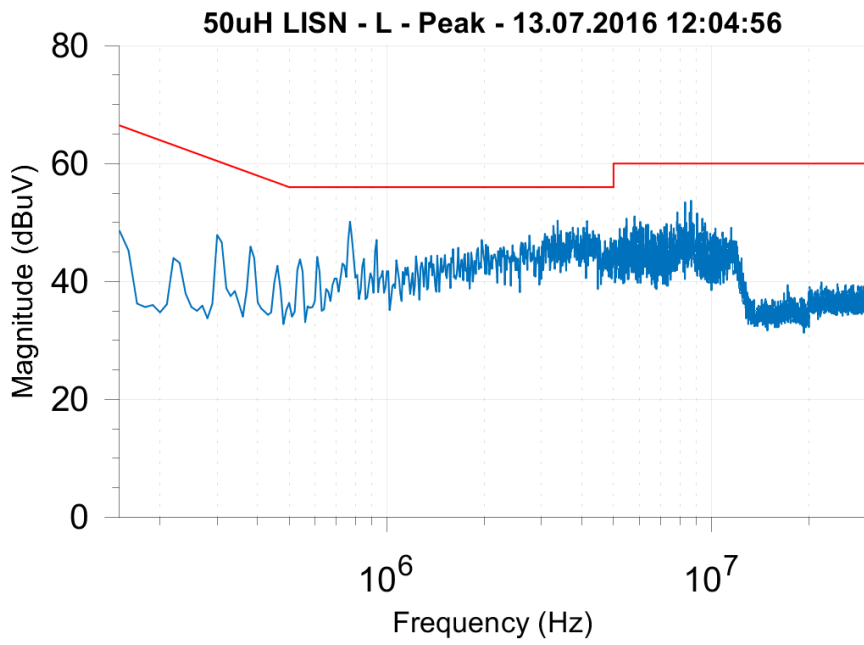
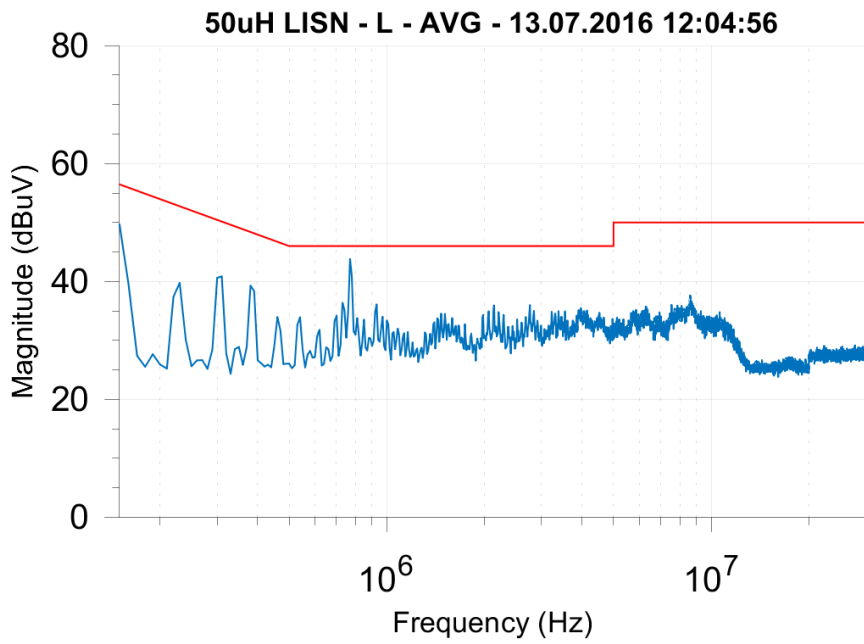
7.2 Output load 0.500A





7.3 Output load 1.000A





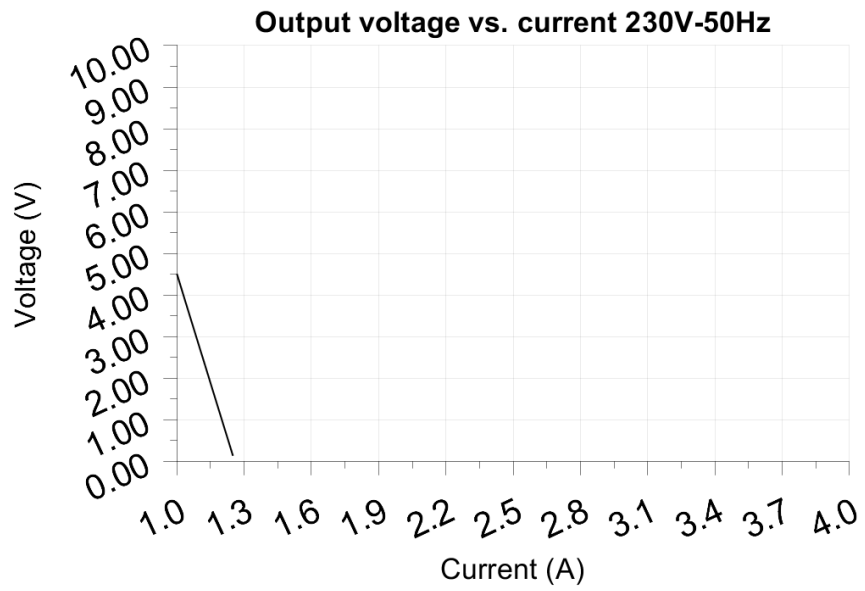
8 Overload testing

Test voltage: 230.00V

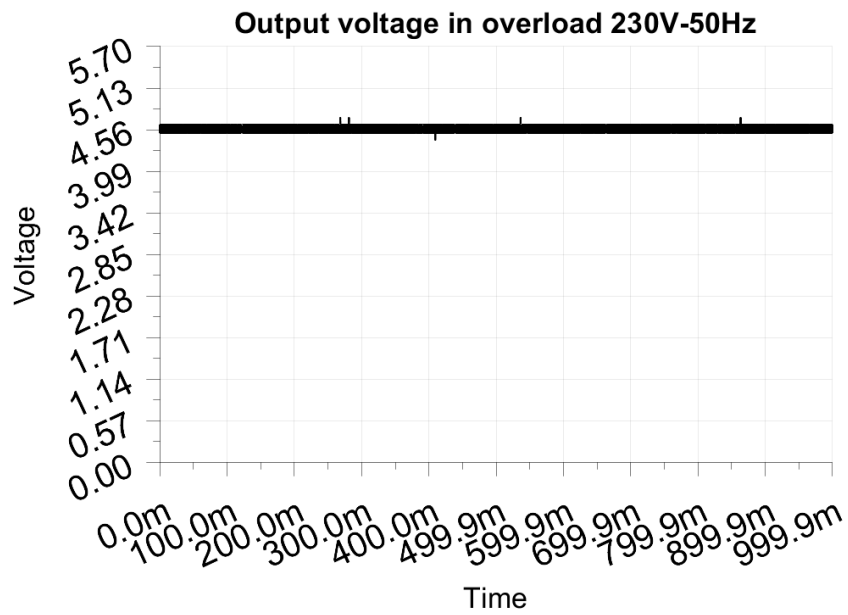
Test Frequency: 50Hz

Threshold: <2.500V

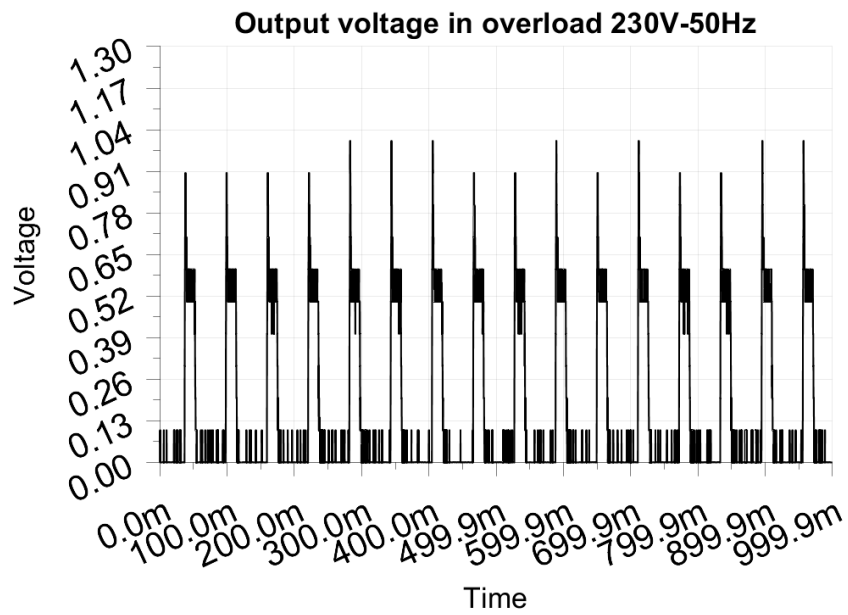
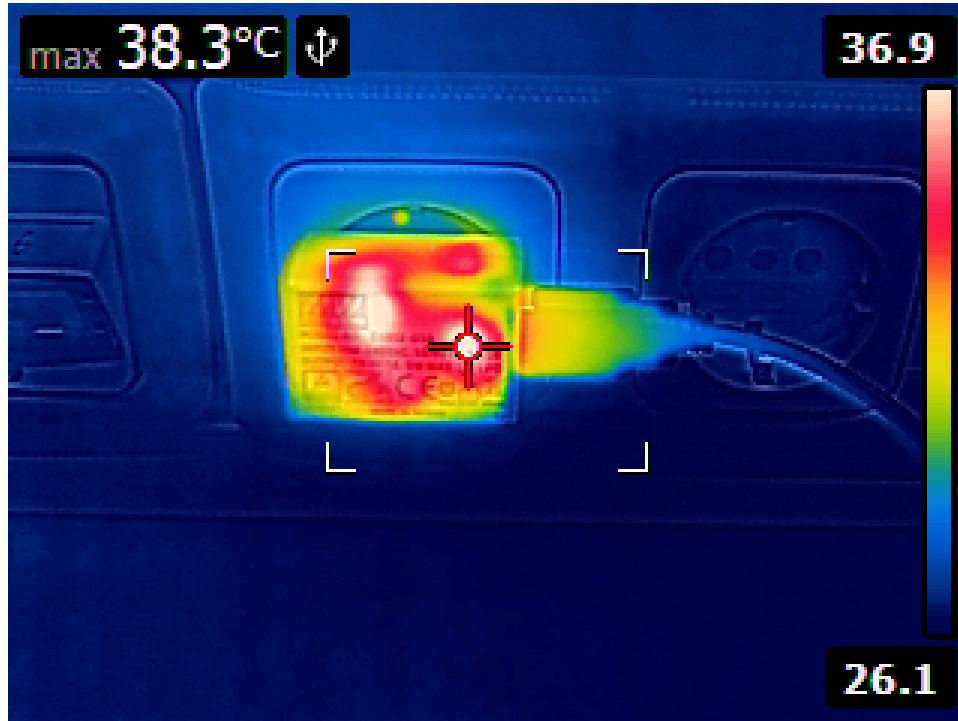
Maximum output current before shutdown: 1.250A



8.1 Output load 1.000A or 100%



8.2 Output load 1.250A or 125%



8.3 Output load 1.500A or 150%

