



develop

PSU test report

Bernhard Woerndl-Aichriedler
bwa@xdevelop.at

1 Contents

- General information
- Point of operation
- Standby power consumption
- Load testing
- Turn on voltage
- Conducted EMI
- Overload testing

2 General information

Testing the following device

Manufacturer: MeanWell
Device name: IRM30-12-ST
Serial number: 1
Nominal voltage: 12.000V
Nominal current: 2.500A
Tester: Bernhard Woerndl-Aichriedler <bwa@xdevelop.at>
Start time: 13-Jul-2016 13:00:05

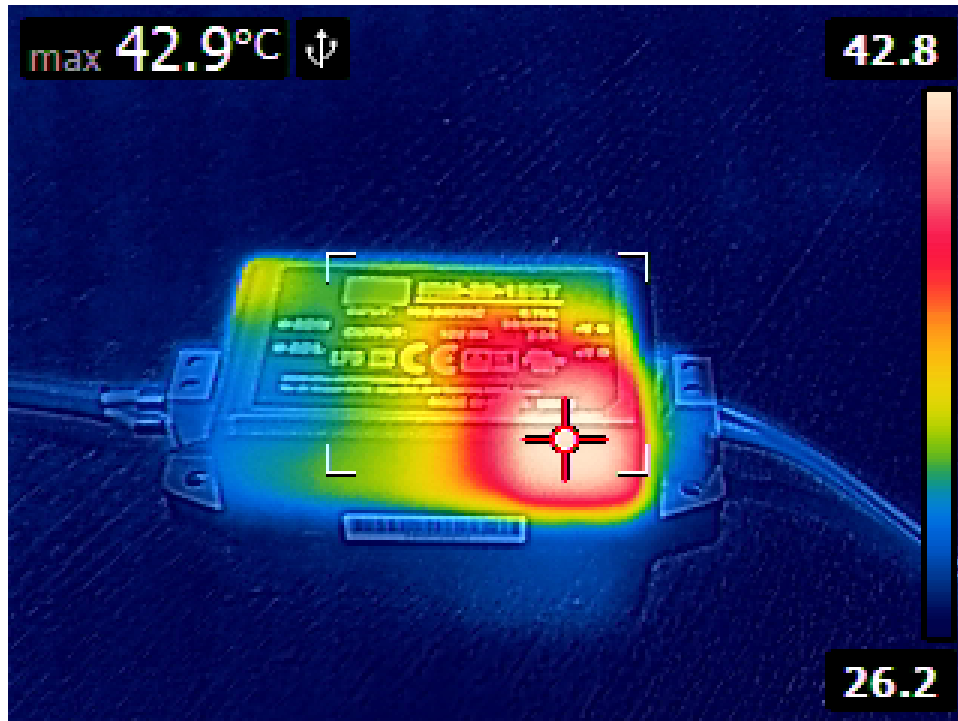


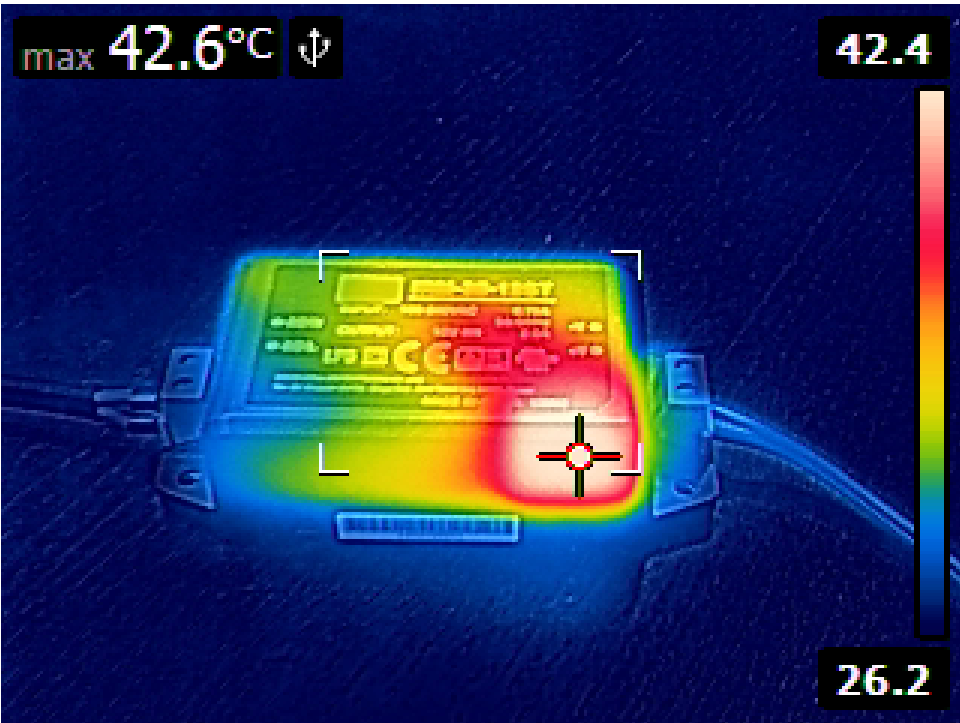
3 Point of operation

The test has been conducted with the following conditions

Voltage/Frequency: 250V-50Hz

Ambient Temperature: 29.41C





4 Standby power consumption

Voltage: 250.69V

Frequency: 50Hz

Current: 0.010692A

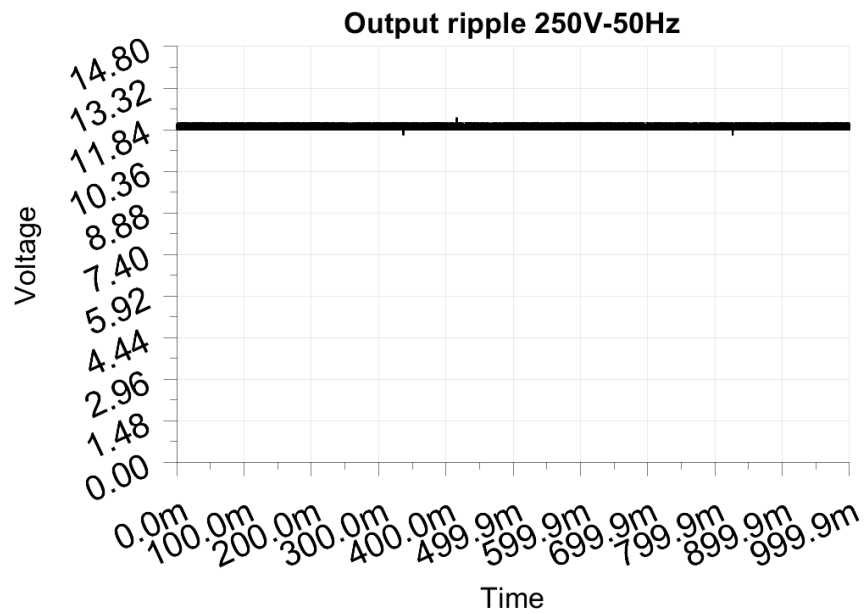
P active: 0.038W

P apparent: 2.680VA

P reactive: 2.680VAR

P factor: 0.014

Output voltage: 12.001V



5 Load testing

Characteristics

Voltage: 250.69V

Frequency: 50Hz

Loads: 0.000A to 2.500A

Minimum output voltage: 11.869V

Maximum output voltage: 11.998V

Regulation error absolute: -0.131V/+0.002V

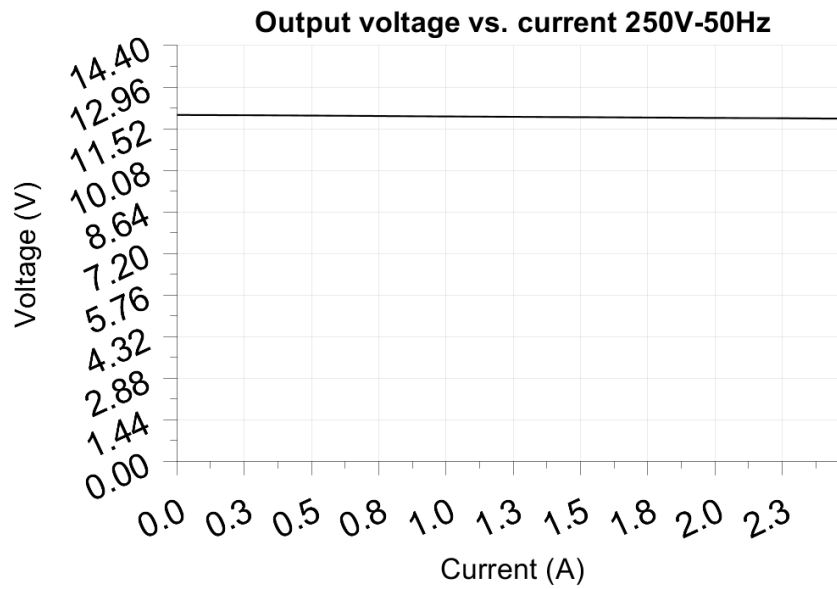
Regulation error relative: -1.1%/+0.0%

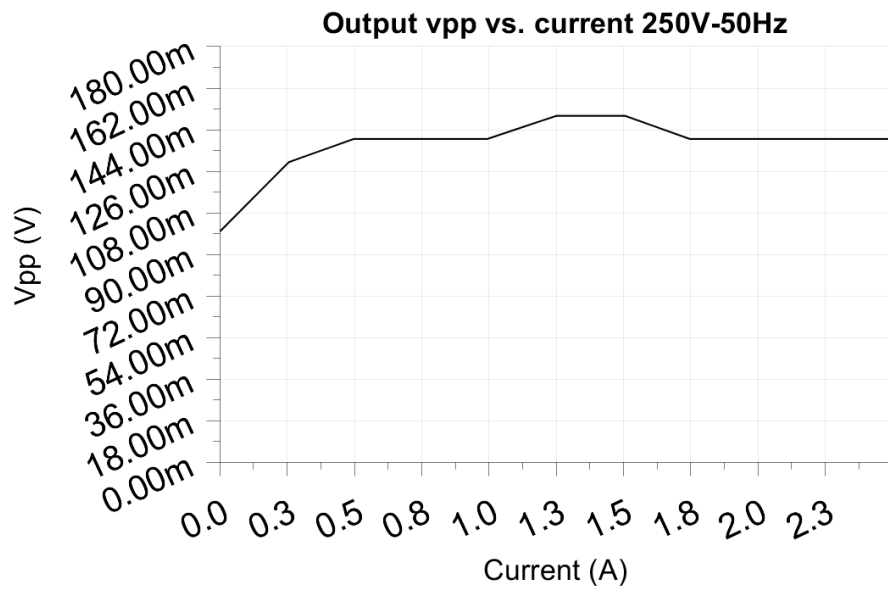
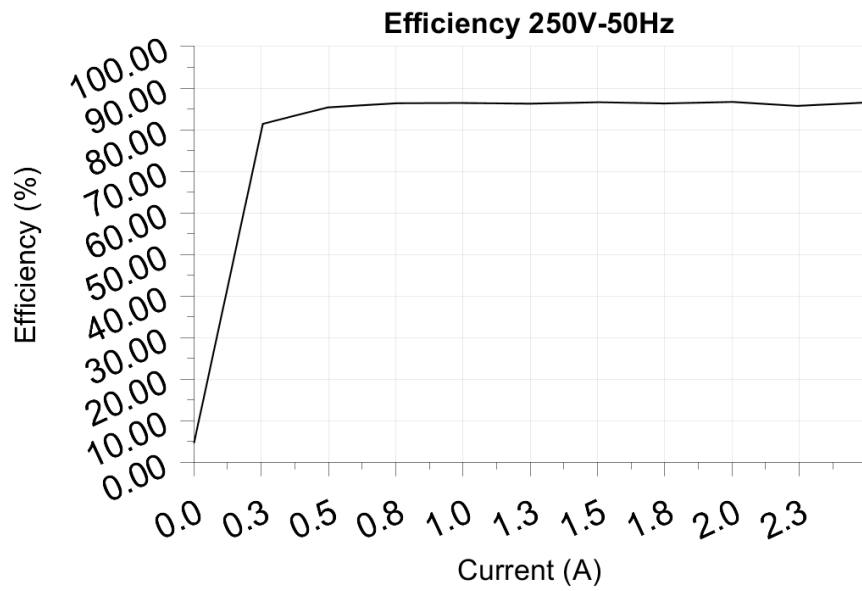
Vpp ripple&noise absolute: 0.150V

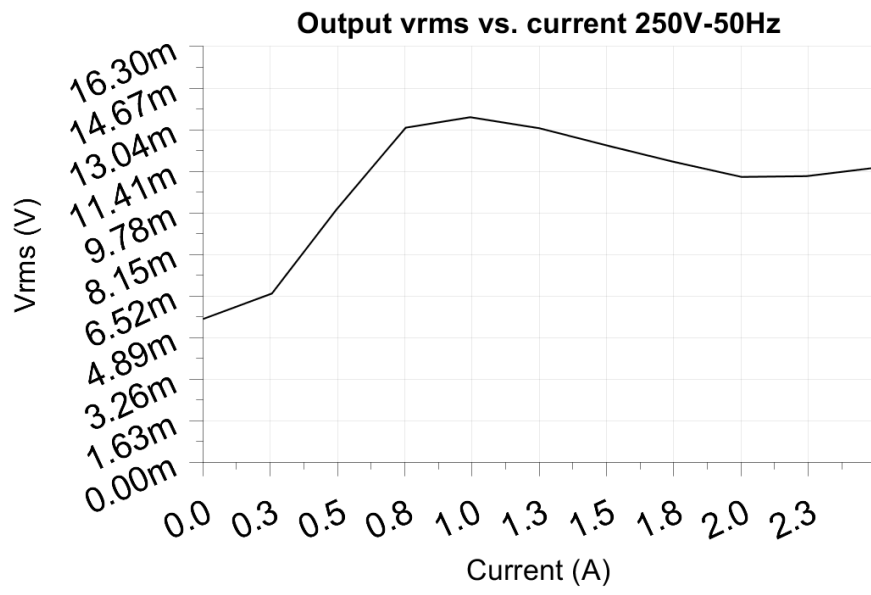
Vpp ripple&noise relative: 1.3%

RMS ripple&noise absolute: 0.014V

RMS ripple&noise relative: 0.1%







6 Turn on voltage

Testing when the PSU enables it's output

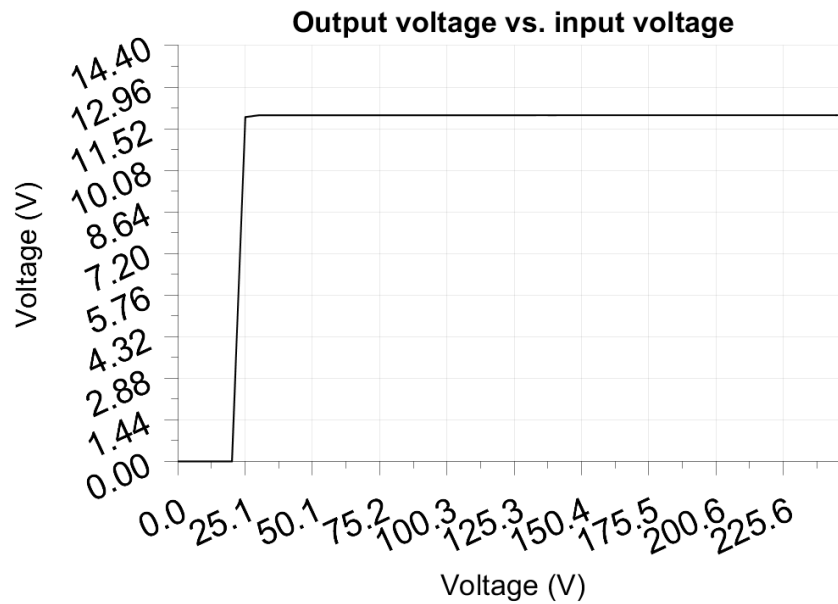
Test load: 0.250A

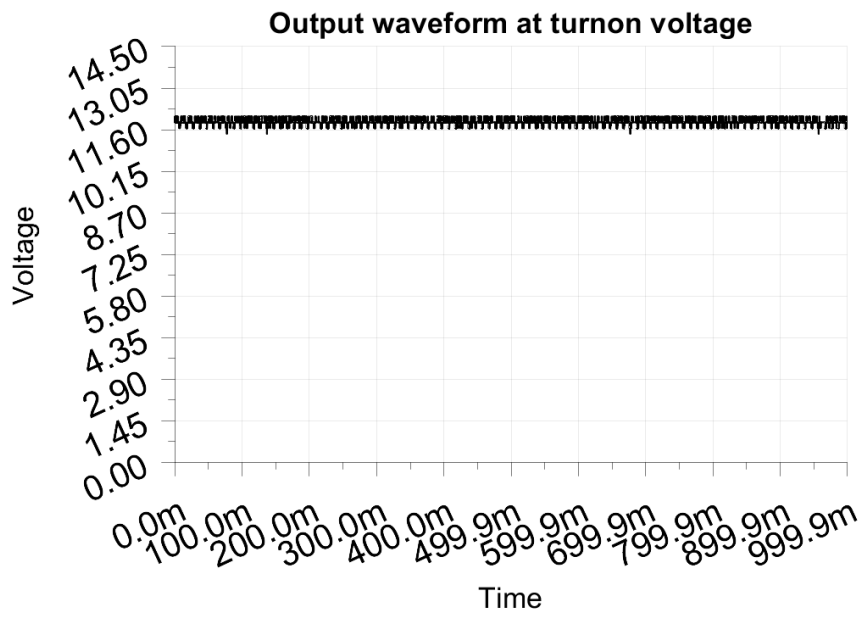
Test Frequency: 50Hz

Threshold: 9.000V

Turn-on voltage: 25.00V

Output voltage: 11.925V





7 Conducted EMI

No EMI test results

8 Overload testing

No overload test results