



develop

PSU test report

Bernhard Woerndl-Aichriedler
bwa@xdevelop.at

1 Contents

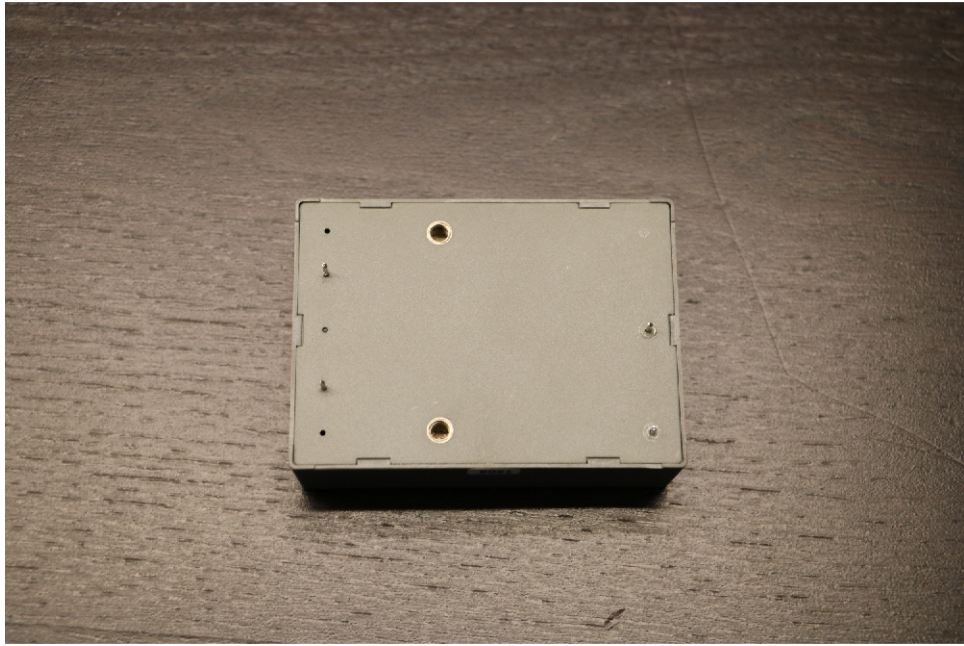
- General information
- Point of operation
- Standby power consumption
- Load testing
- Turn on voltage
- Conducted EMI
- Overload testing

2 General information

Testing the following device

Manufacturer: Traco
Device name: TMP15112
Serial number: 1
Nominal voltage: 12.000V
Nominal current: 1.250A
Tester: Bernhard Woerndl-Aichriedler <bwa@xdevelop.at>
Start time: 13-Jul-2016 15:56:11



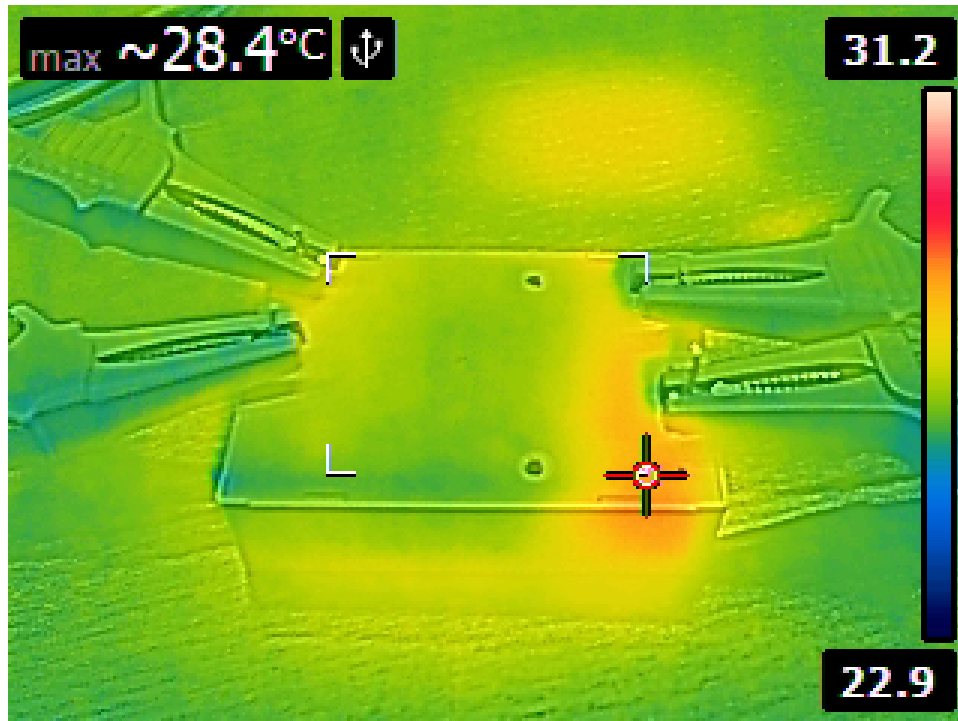


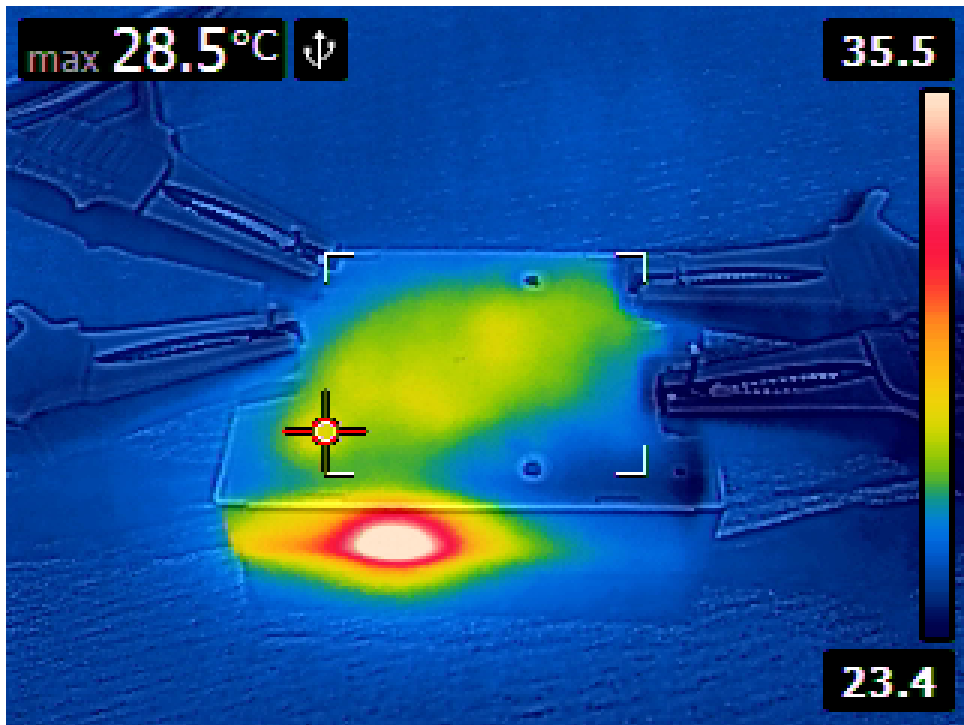
3 Point of operation

The test has been conducted with the following conditions

Voltage/Frequency: 210V-50Hz

Ambient Temperature: 29.18C





4 Standby power consumption

Voltage: 210.60V

Frequency: 50Hz

Current: 0.011740A

P active: 0.417W

P apparent: 2.473VA

P reactive: 2.437VAR

P factor: 0.169

Output voltage: 12.012V



5 Load testing

Characteristics

Voltage: 210.62V

Frequency: 50Hz

Loads: 0.000A to 1.250A

Minimum output voltage: 11.998V

Maximum output voltage: 12.012V

Regulation error absolute: -0.002V/+0.012V

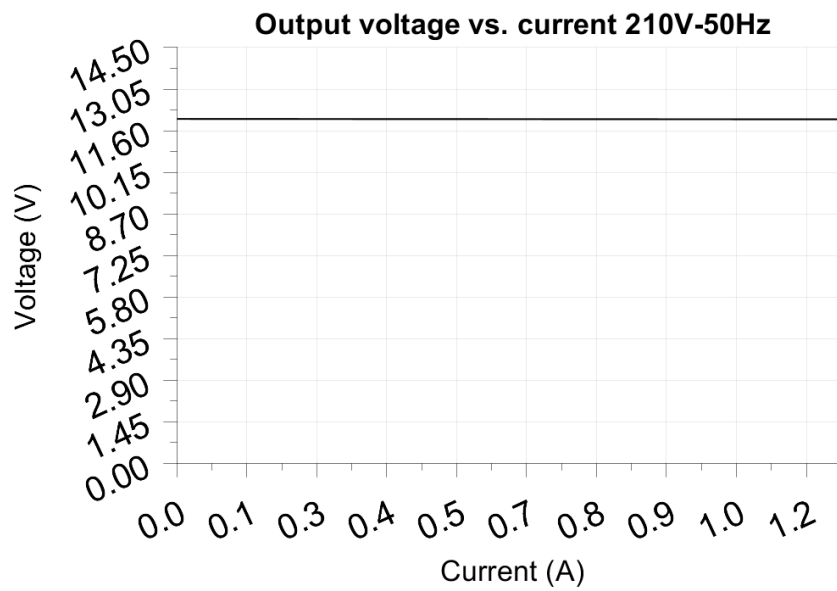
Regulation error relative: -0.0%/+0.1%

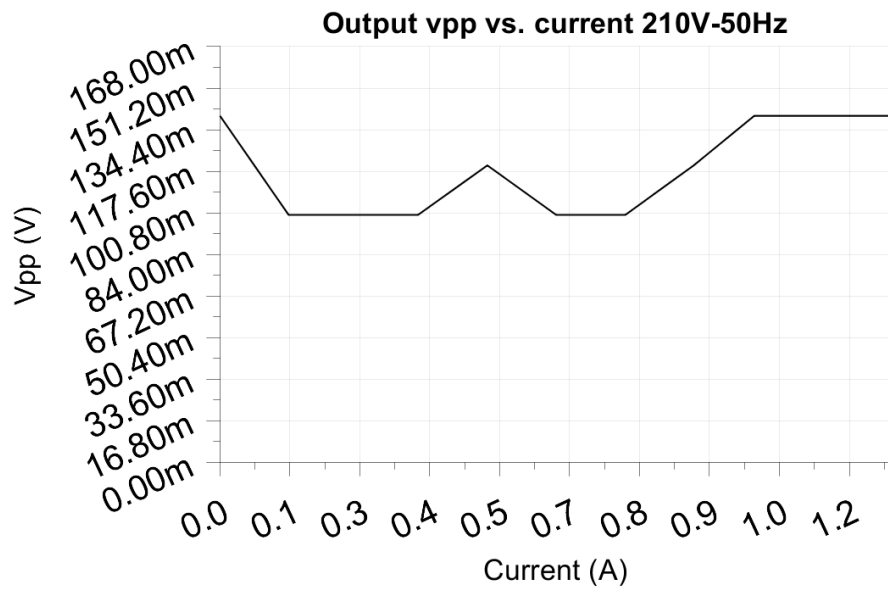
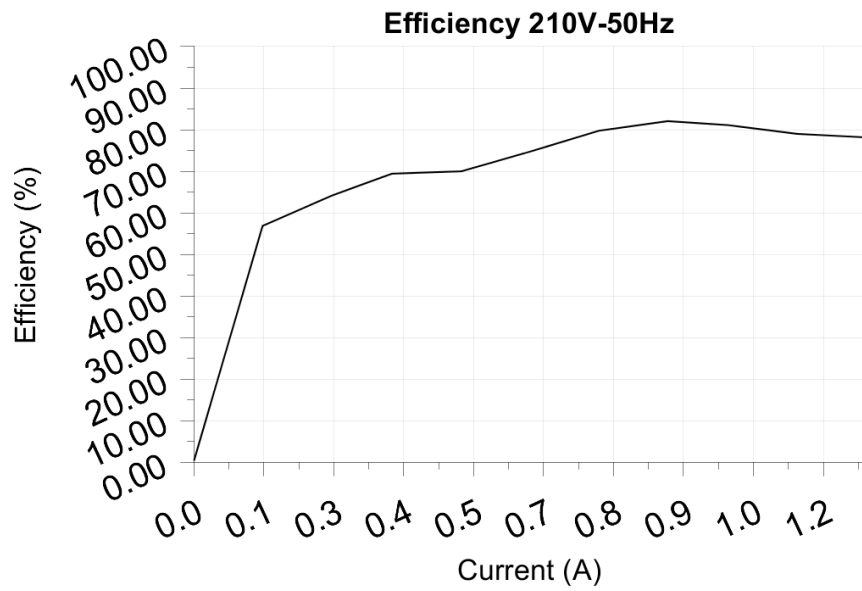
Vpp ripple&noise absolute: 0.140V

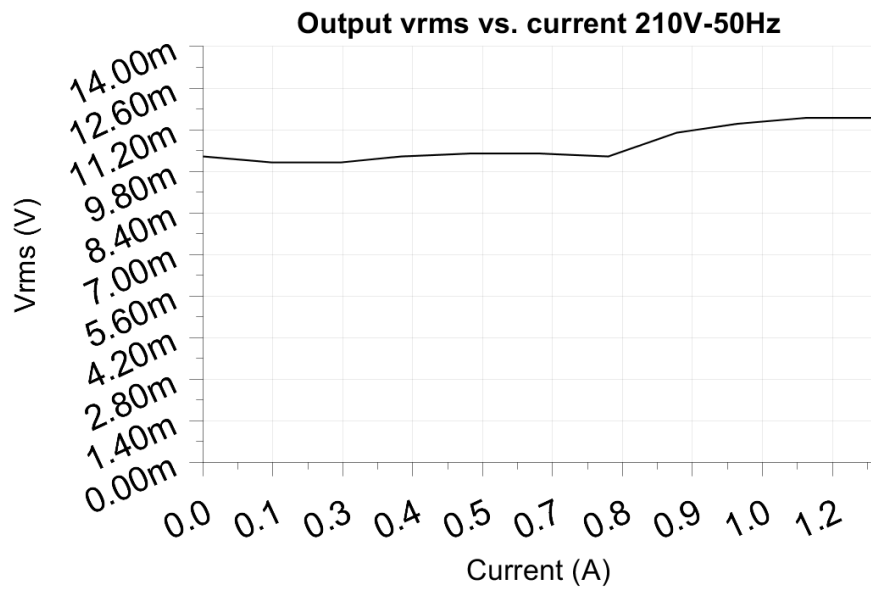
Vpp ripple&noise relative: 1.2%

RMS ripple&noise absolute: 0.012V

RMS ripple&noise relative: 0.1%







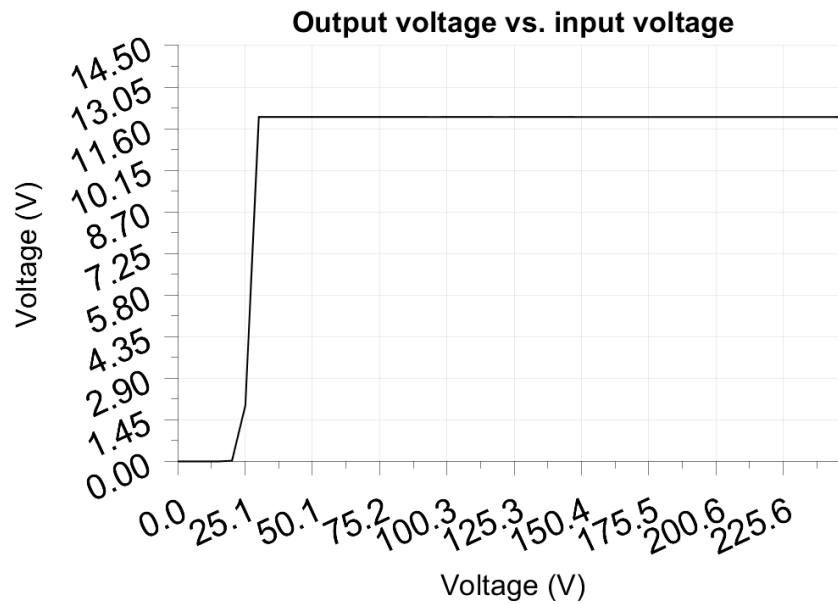
6 Turn on voltage

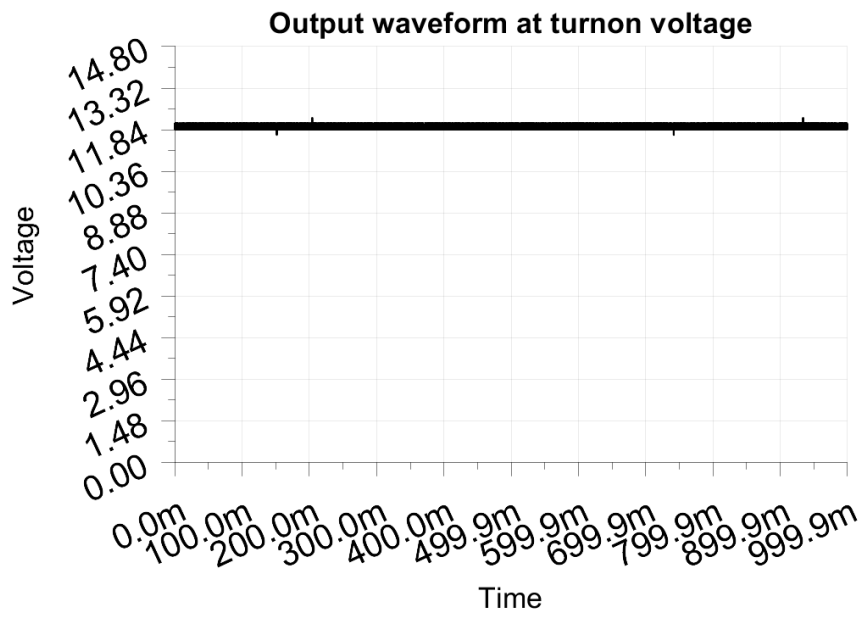
Testing when the PSU enables it's output

Test load: 0.125A
Test Frequency: 50Hz
Threshold: 9.000V

Turn-on voltage: 30.00V

Output voltage: 12.009V





7 Conducted EMI

No EMI test results

8 Overload testing

No overload test results