



develop

PSU test report

Bernhard Woerndl-Aichriedler
bwa@xdevelop.at

1 Contents

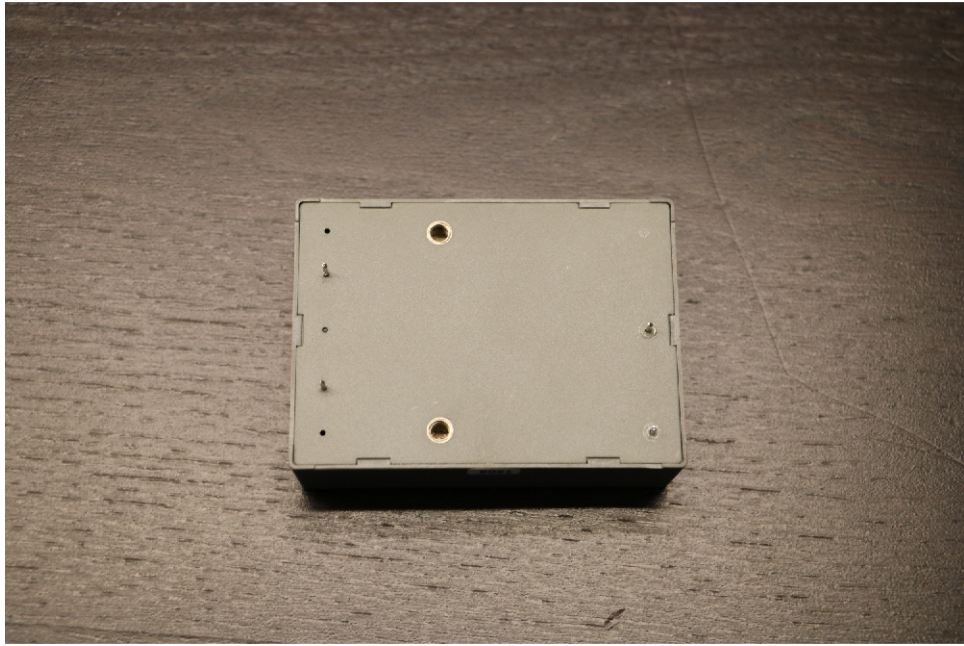
- General information
- Point of operation
- Standby power consumption
- Load testing
- Turn on voltage
- Conducted EMI
- Overload testing

2 General information

Testing the following device

Manufacturer: Traco
Device name: TMP15112
Serial number: 1
Nominal voltage: 12.000V
Nominal current: 1.250A
Tester: Bernhard Woerndl-Aichriedler <bwa@xdevelop.at>
Start time: 13-Jul-2016 15:56:11



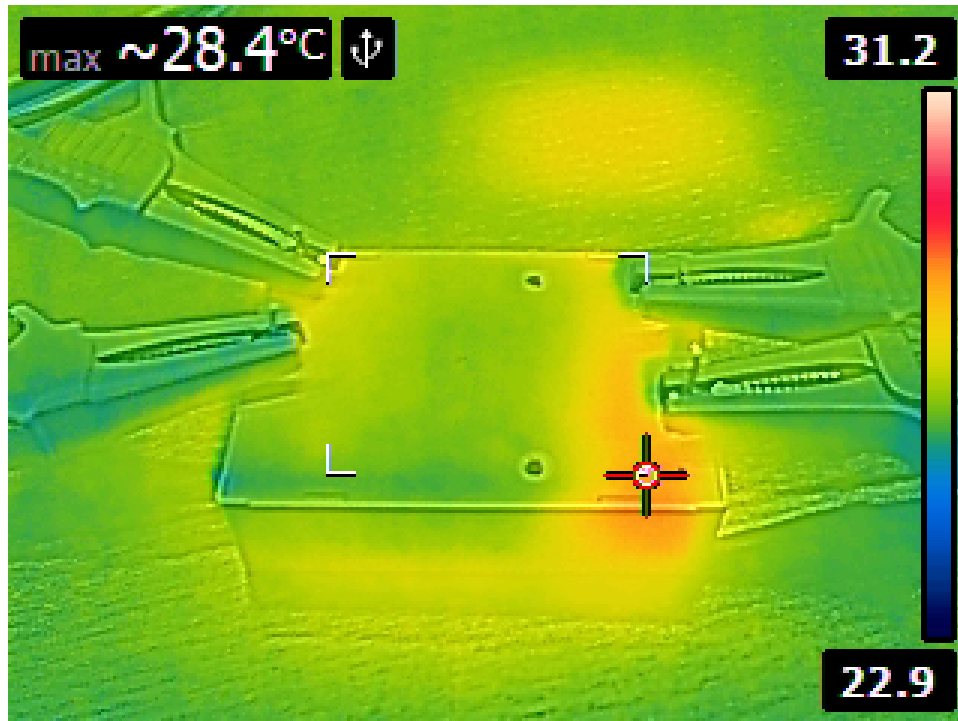


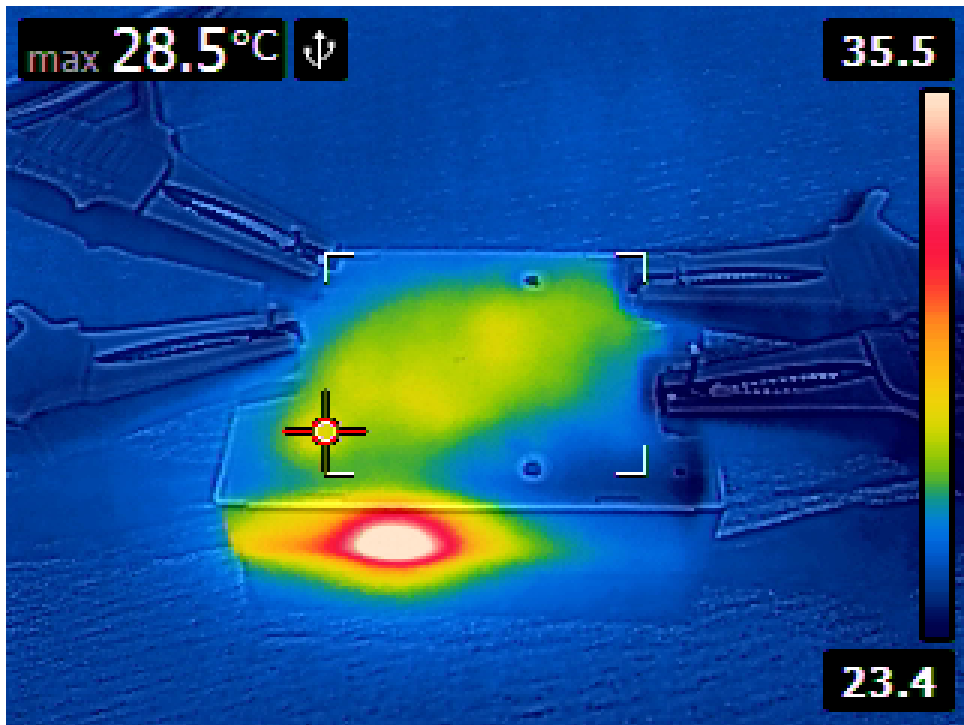
3 Point of operation

The test has been conducted with the following conditions

Voltage/Frequency: 230V-50Hz

Ambient Temperature: 29.18C





4 Standby power consumption

Voltage: 230.63V

Frequency: 50Hz

Current: 0.012428A

P active: 0.450W

P apparent: 2.866VA

P reactive: 2.831VAR

P factor: 0.157

Output voltage: 12.011V



5 Load testing

Characteristics

Voltage: 230.63V

Frequency: 50Hz

Loads: 0.000A to 1.250A

Minimum output voltage: 11.998V

Maximum output voltage: 12.011V

Regulation error absolute: -0.002V/+0.011V

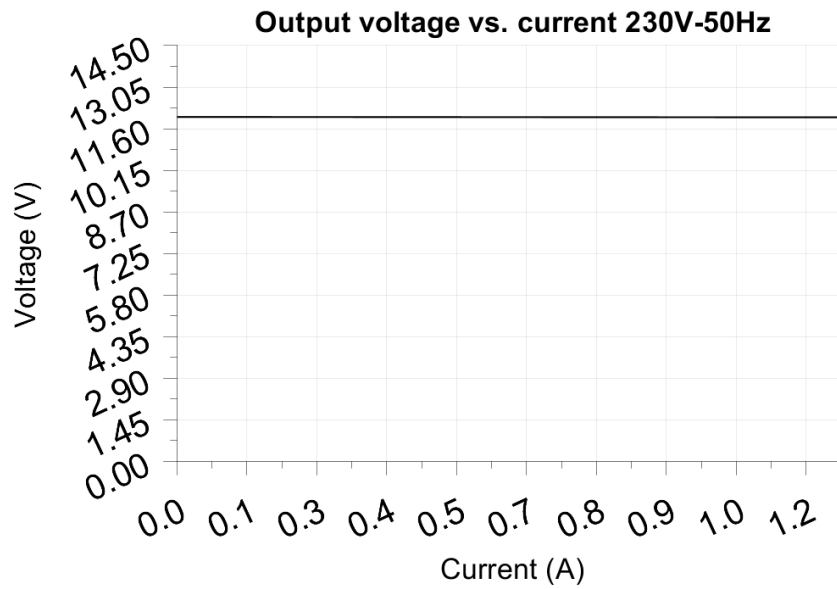
Regulation error relative: -0.0%/+0.1%

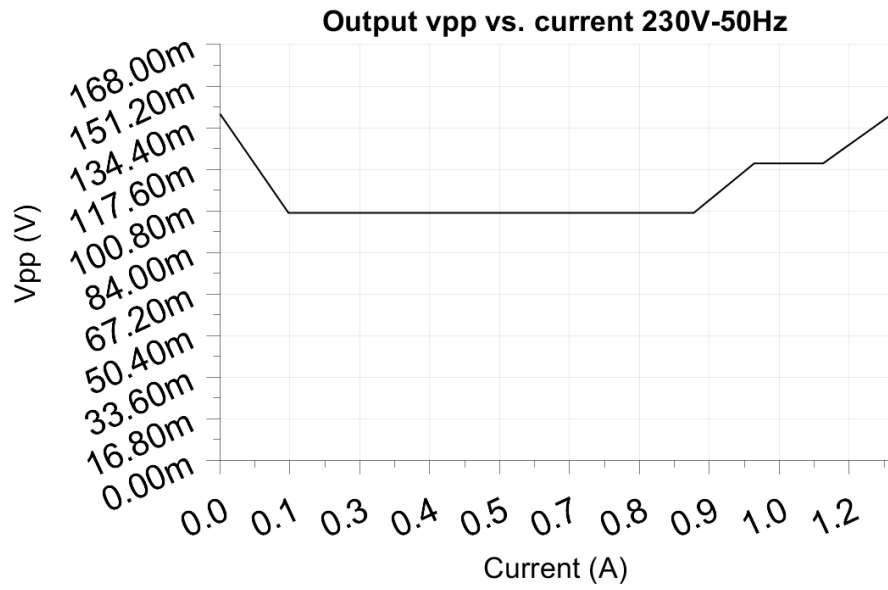
Vpp ripple&noise absolute: 0.140V

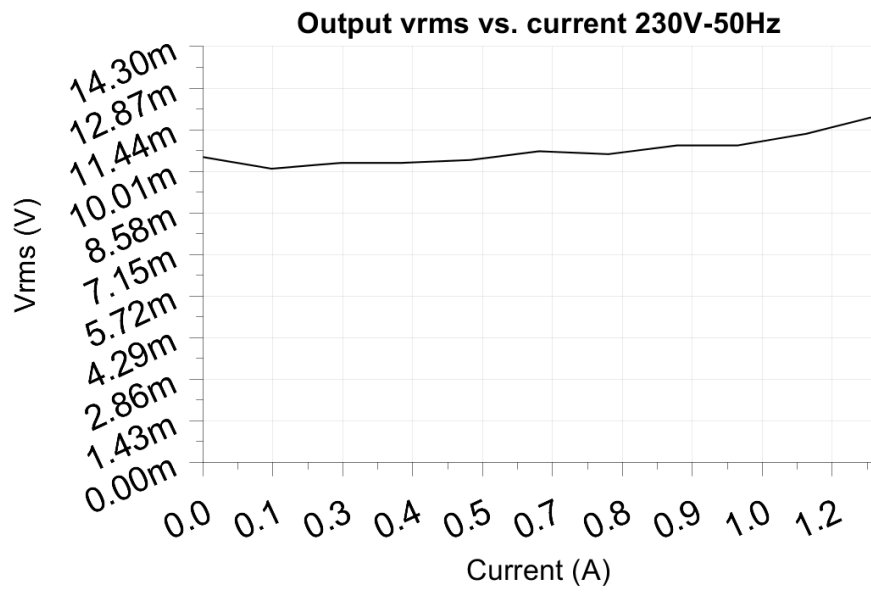
Vpp ripple&noise relative: 1.2%

RMS ripple&noise absolute: 0.012V

RMS ripple&noise relative: 0.1%







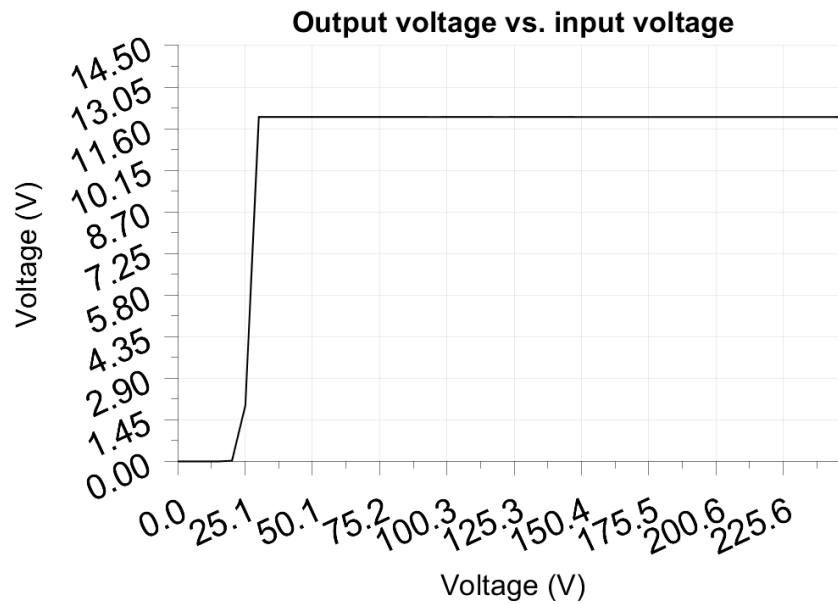
6 Turn on voltage

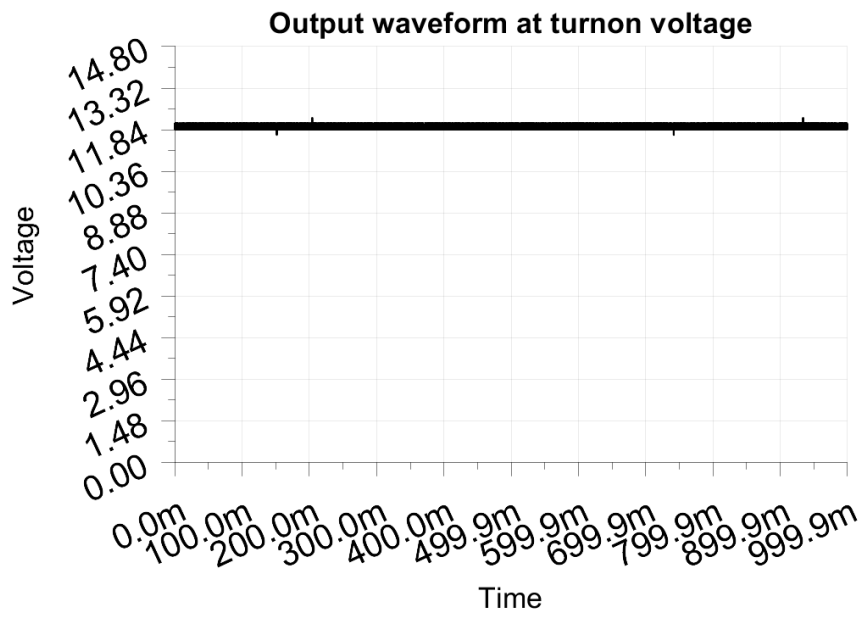
Testing when the PSU enables it's output

Test load: 0.125A
Test Frequency: 50Hz
Threshold: 9.000V

Turn-on voltage: 30.00V

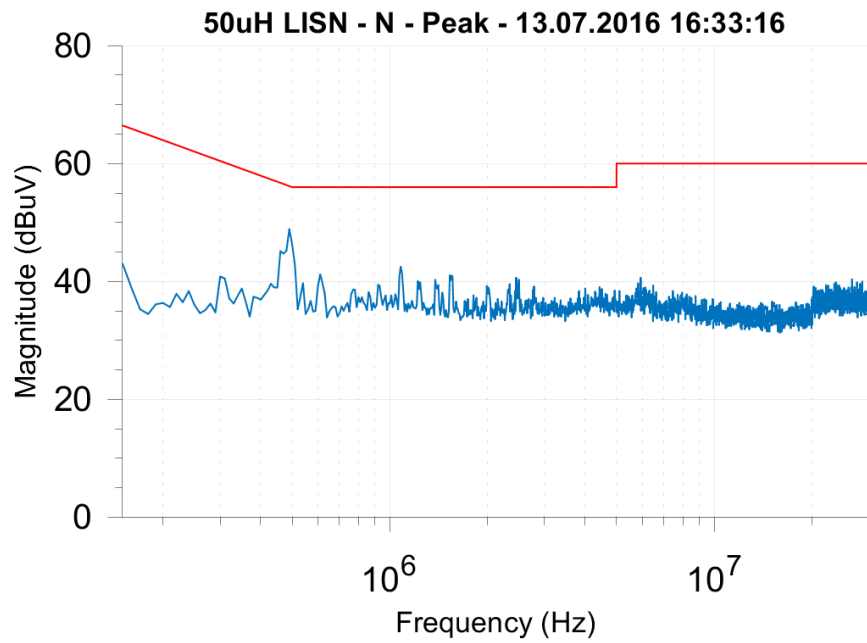
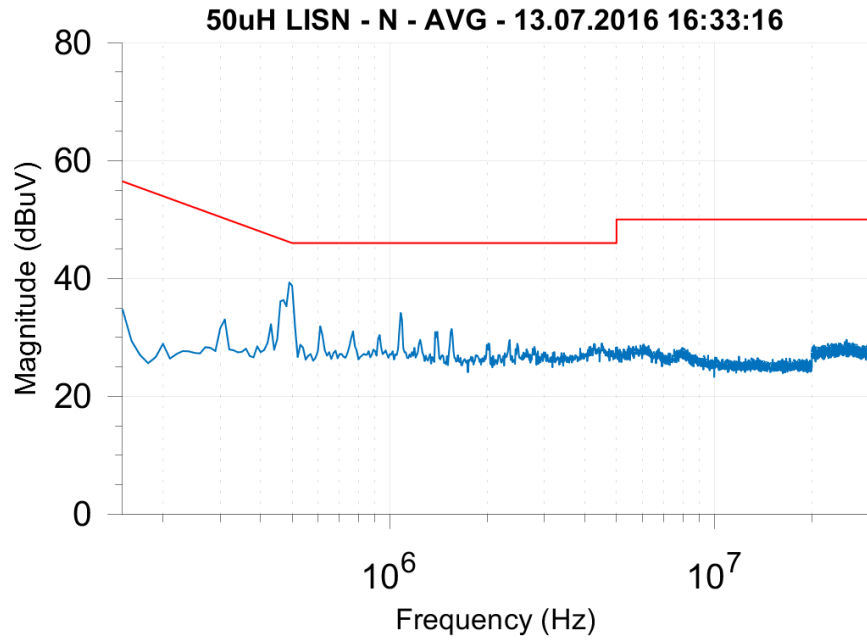
Output voltage: 12.009V

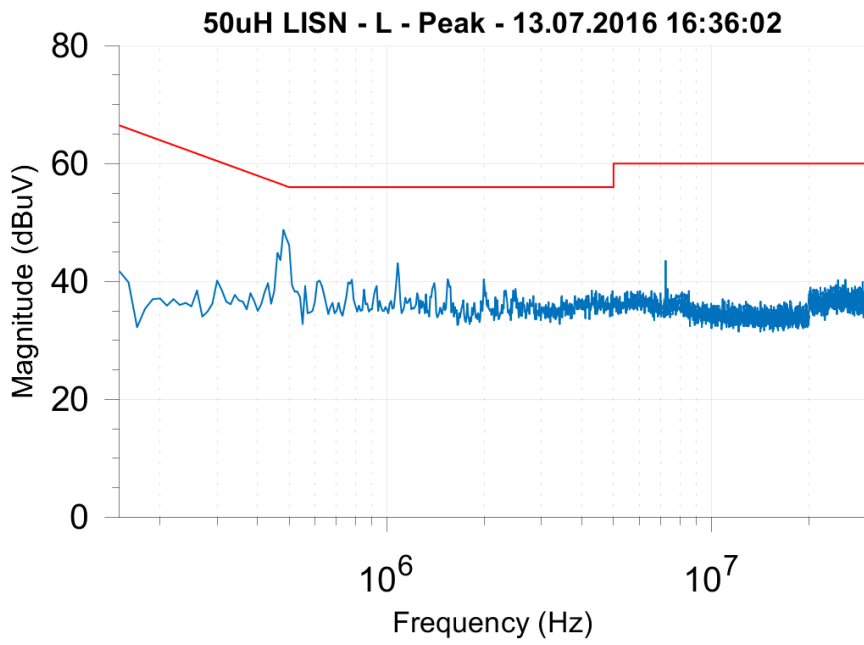
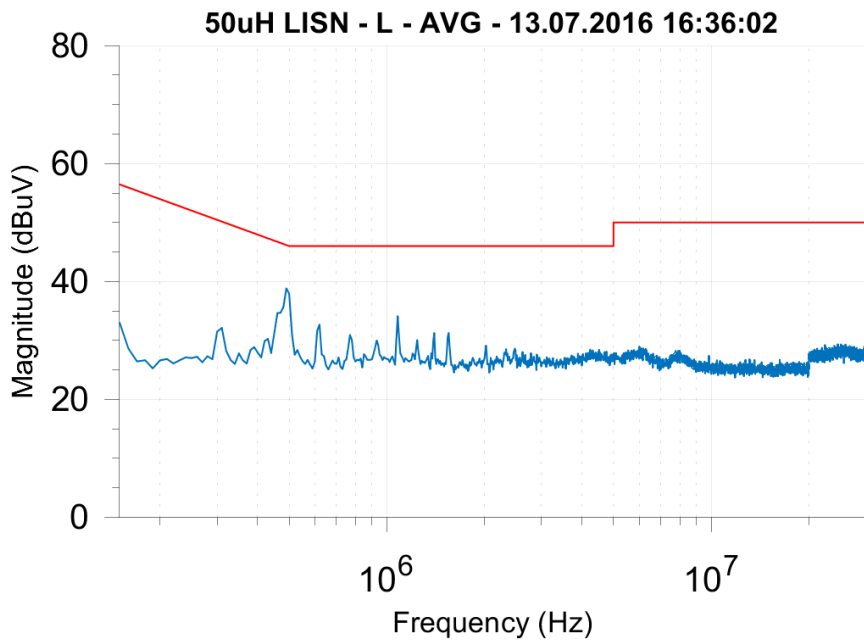




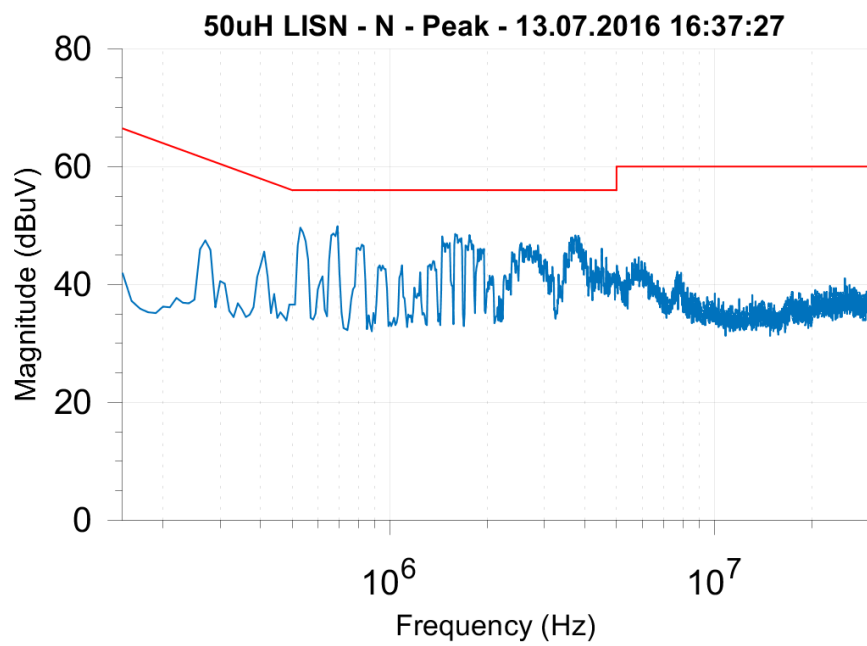
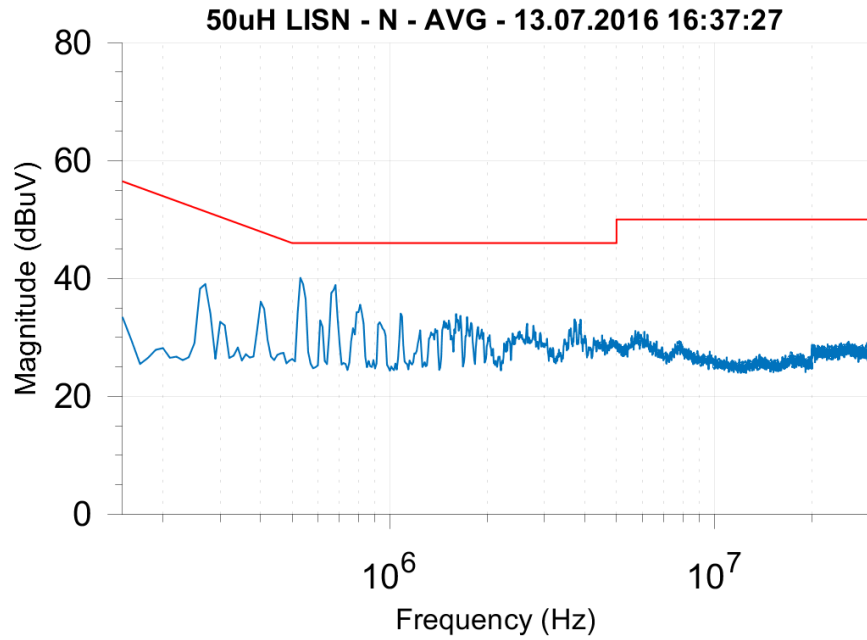
7 Conducted EMI

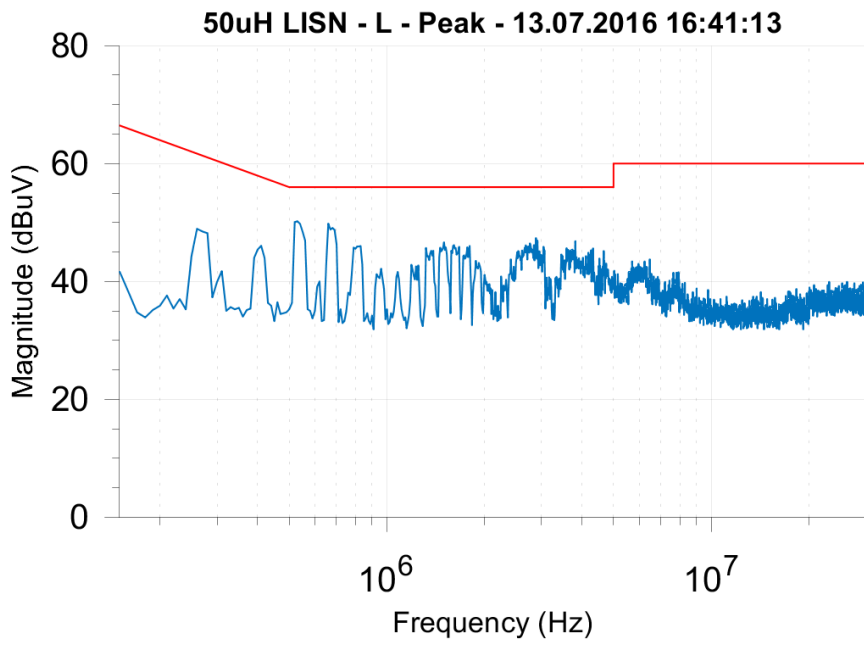
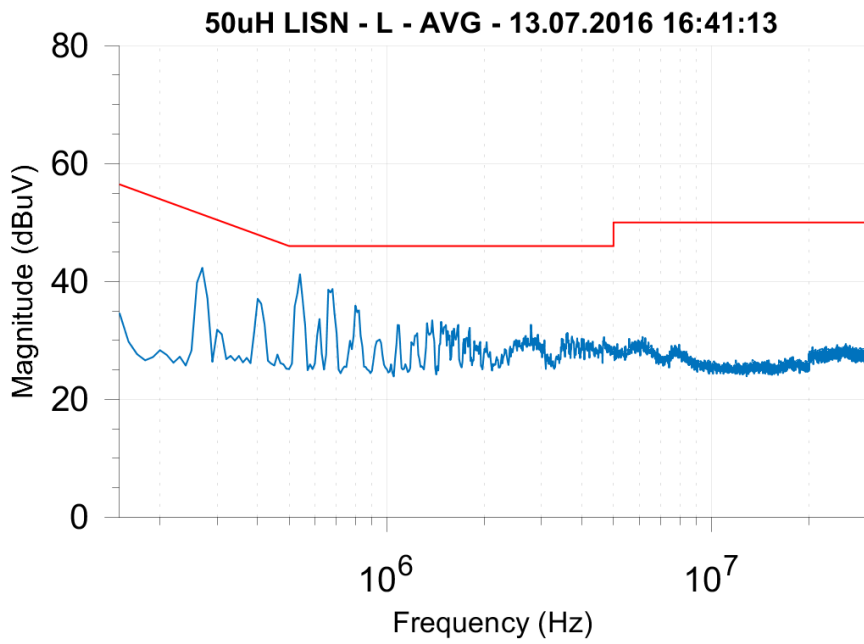
7.1 Output load 0.000A



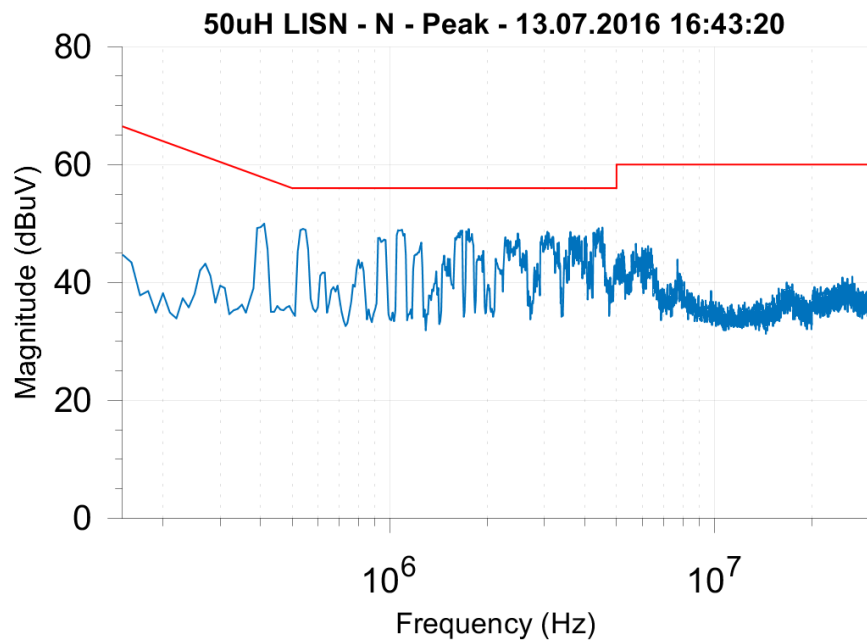
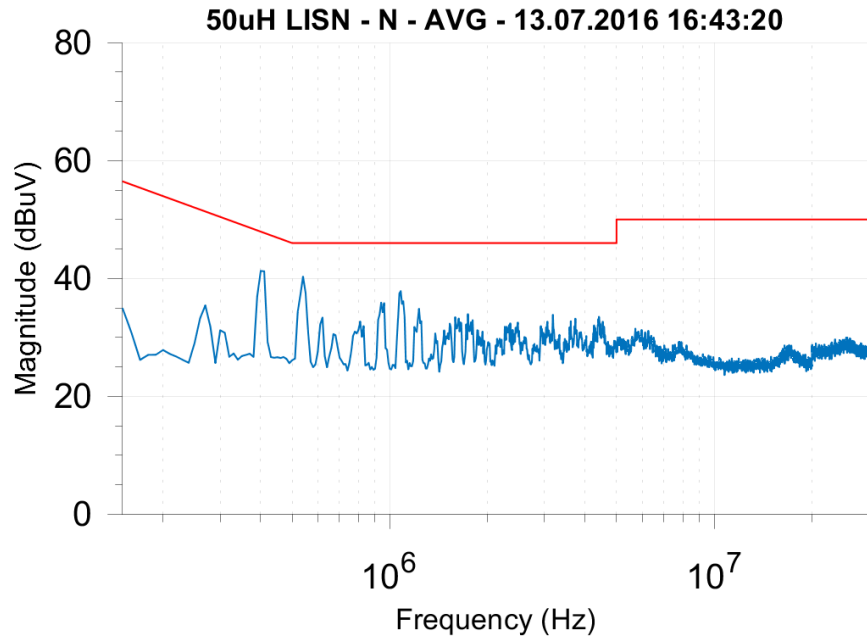


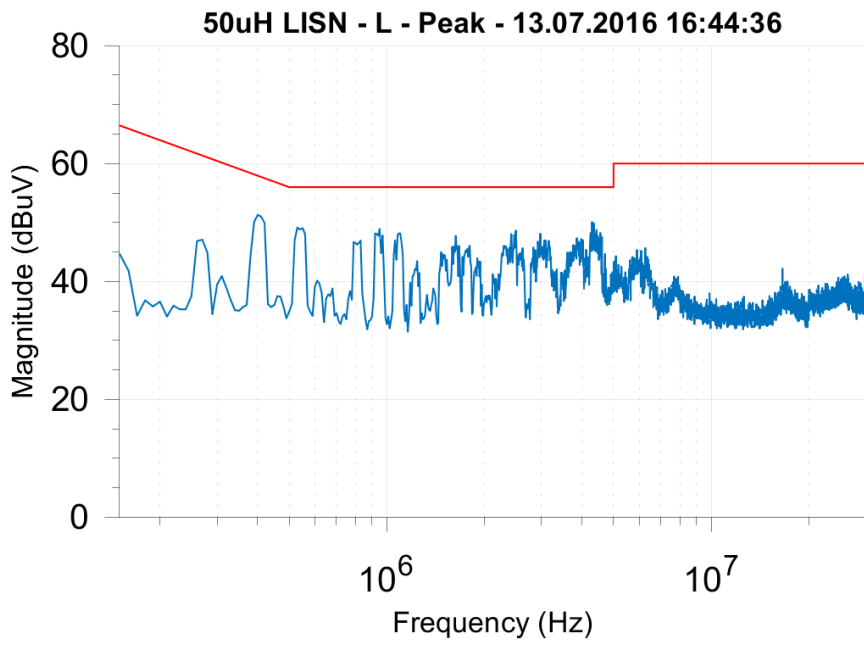
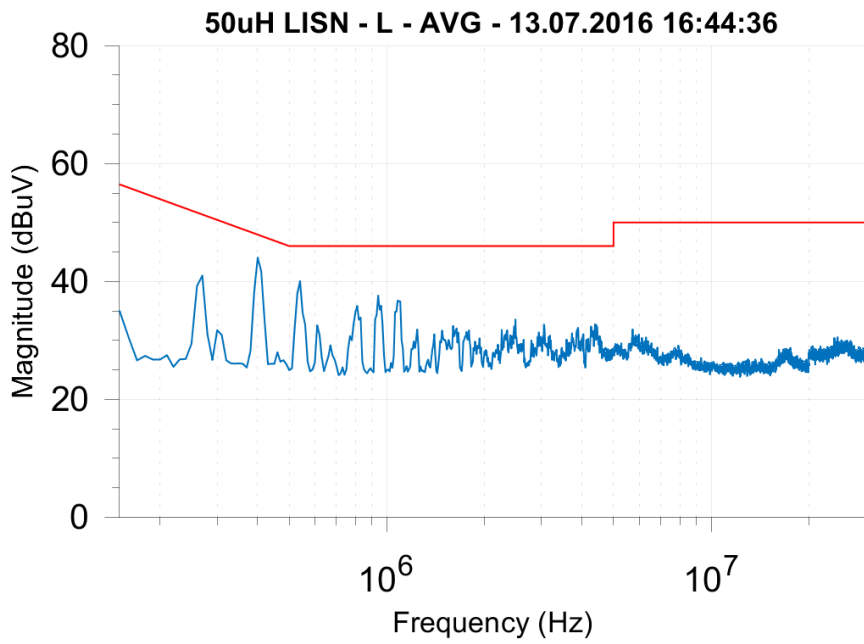
7.2 Output load 0.625A





7.3 Output load 1.250A





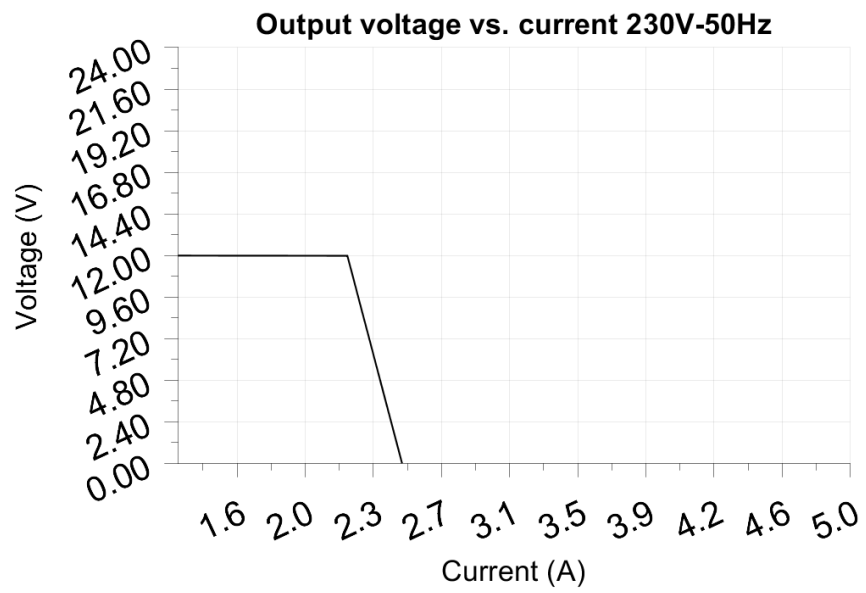
8 Overload testing

Test voltage: 230.00V

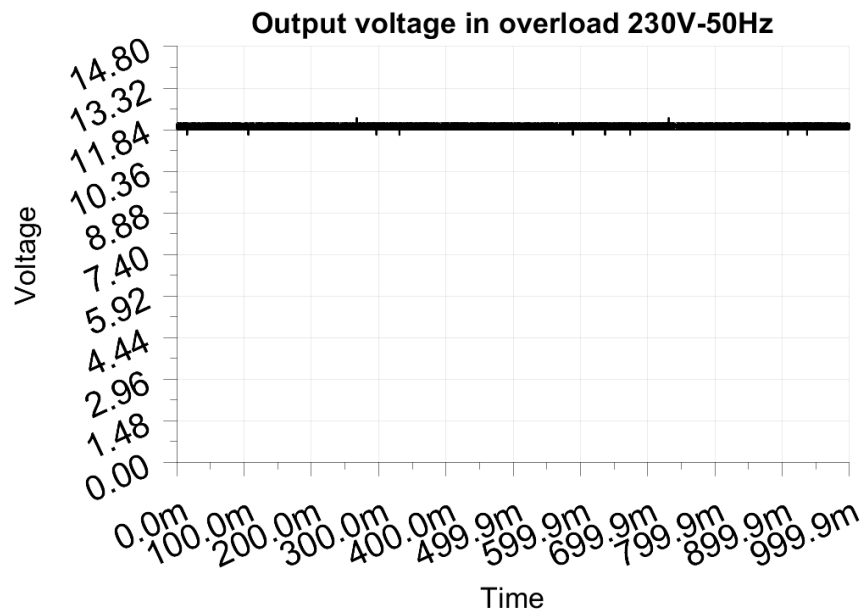
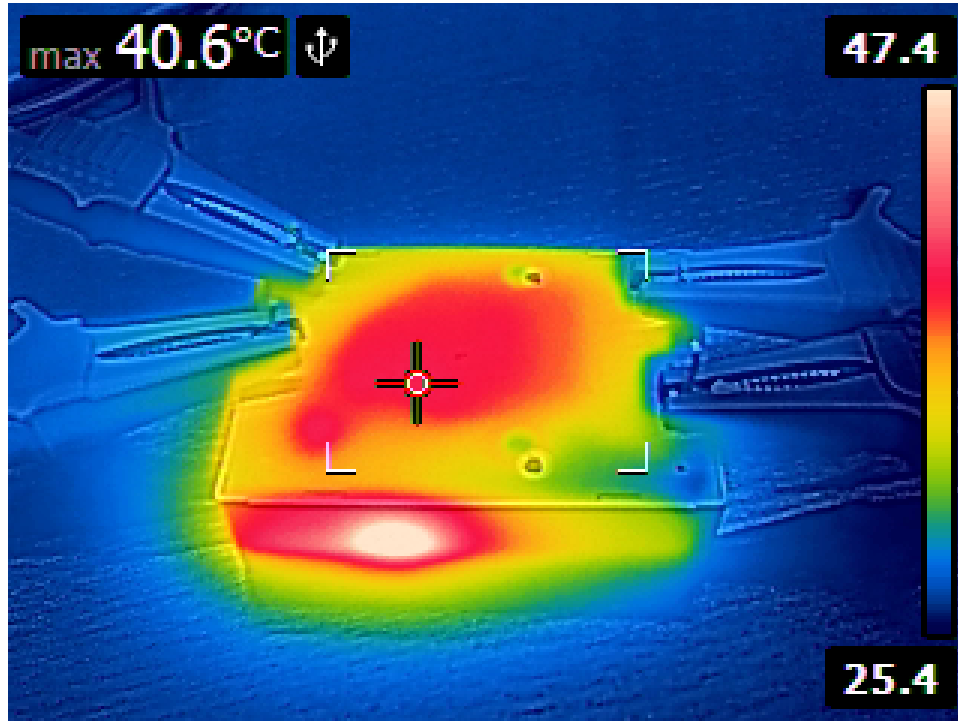
Test Frequency: 50Hz

Threshold: <6.000V

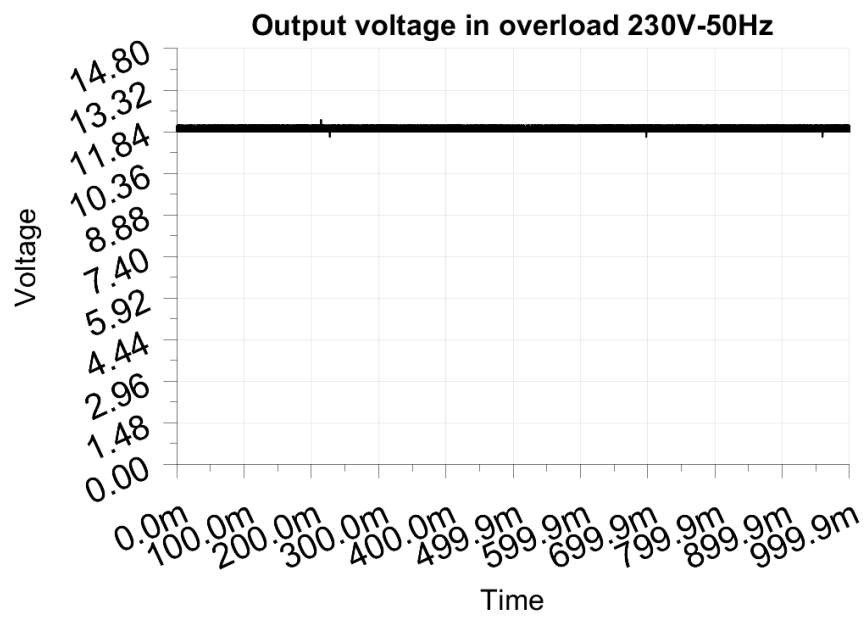
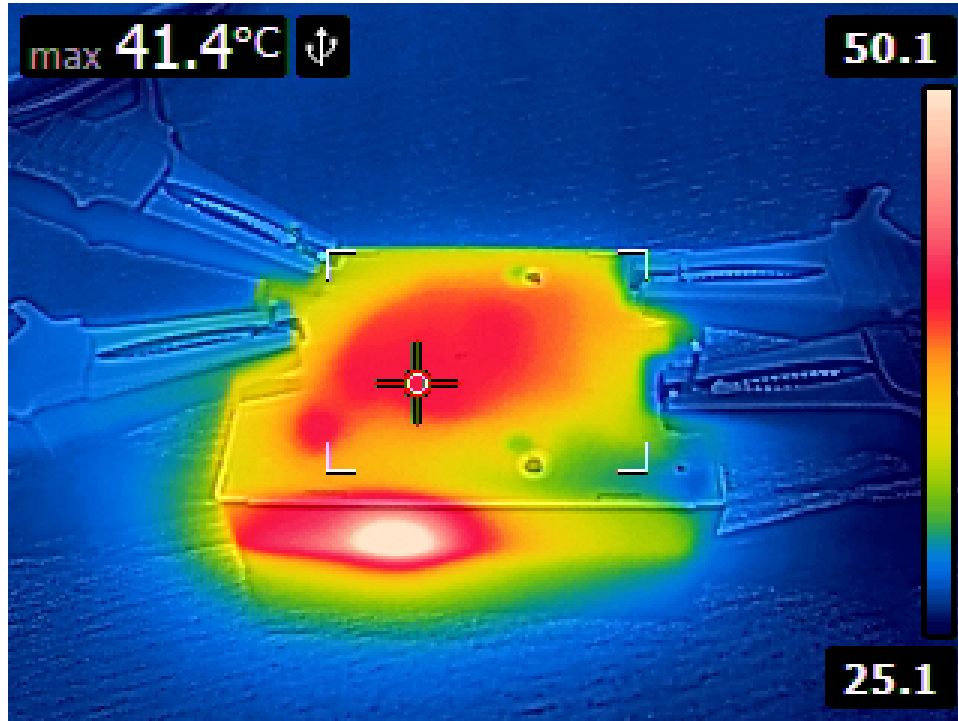
Maximum output current before shutdown: 2.500A



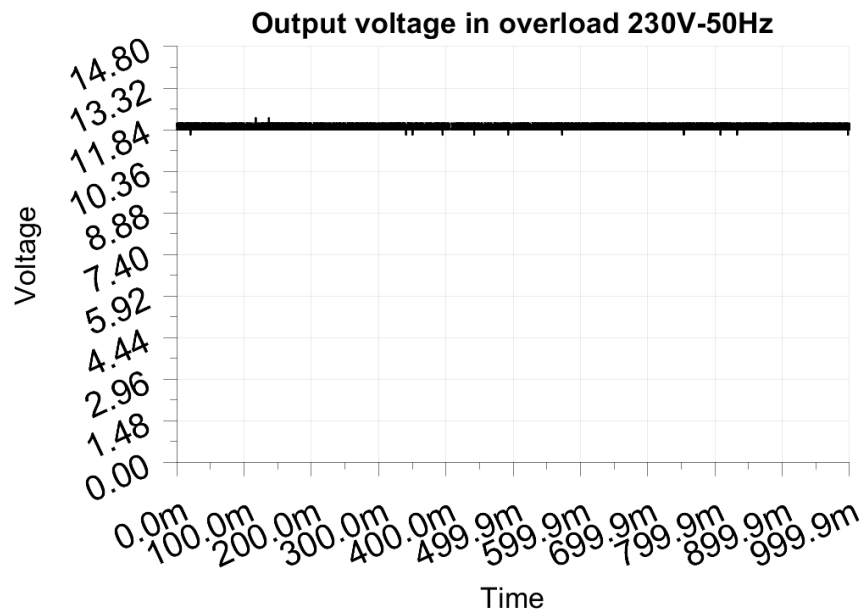
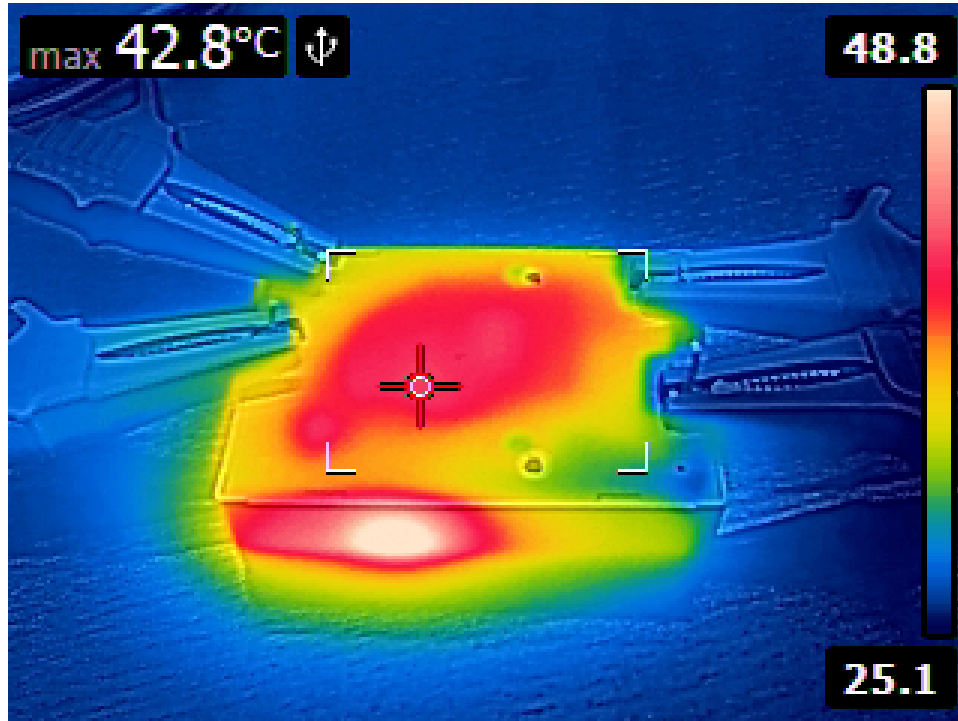
8.1 Output load 1.250A or 100%



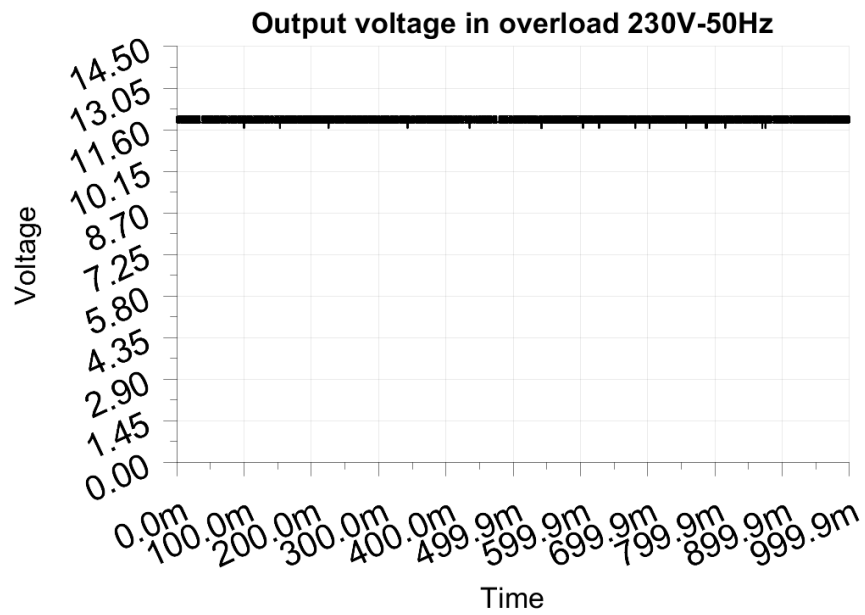
8.2 Output load 1.563A or 125%



8.3 Output load 1.875A or 150%



8.4 Output load 2.188A or 175%



8.5 Output load 2.500A or 200%

