



develop

# PSU test report

*Bernhard Woerndl-Aichriedler*  
*bwa@xdevelop.at*

## 1 Contents

- General information
- Point of operation
- Standby power consumption
- Load testing
- Turn on voltage
- Conducted EMI
- Overload testing

## 2 General information

Testing the following device

Manufacturer: Vigortronix  
Device name: VTX-214-003-112  
Serial number: 1  
Nominal voltage: 12.000V  
Nominal current: 0.250A  
Tester: Bernhard Woerndl-Aichriedler <bwa@xdevelop.at>  
Start time: 13-Jul-2016 23:34:41

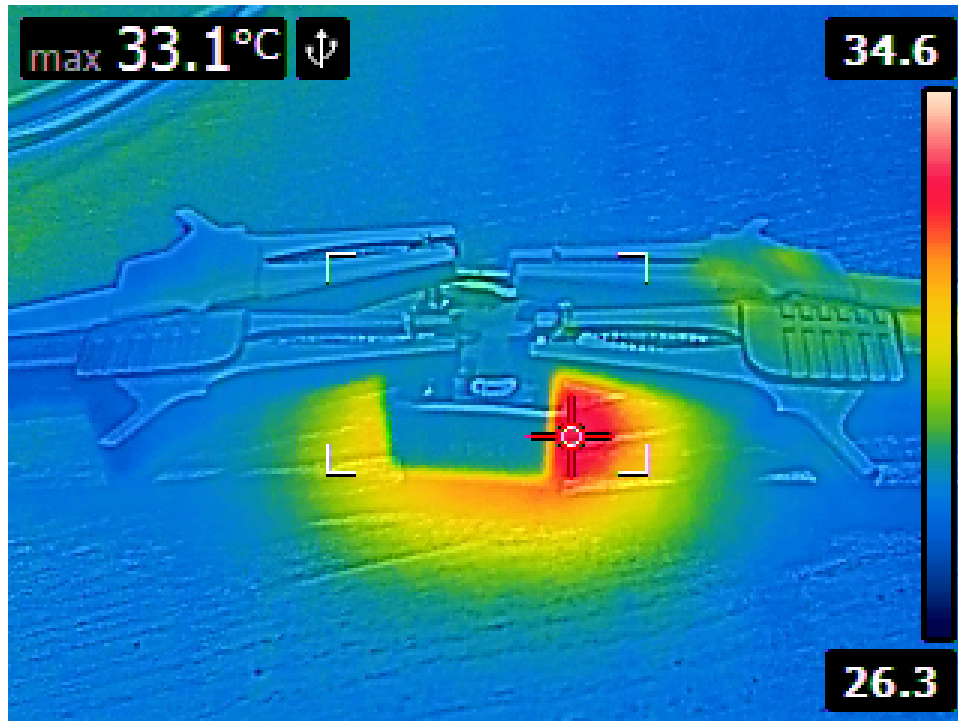


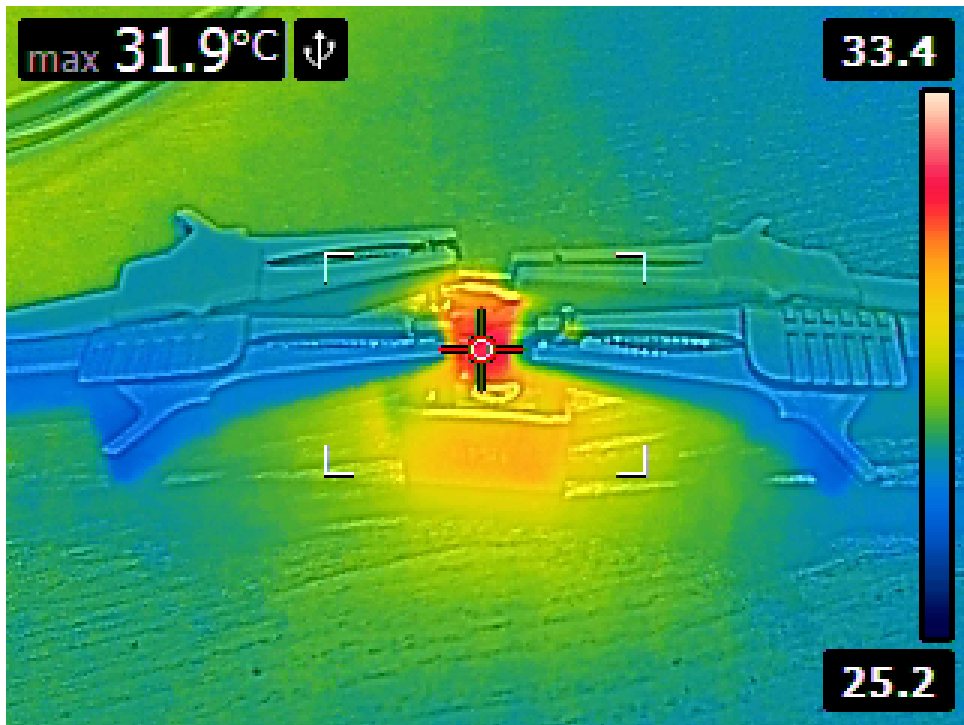
### 3 Point of operation

The test has been conducted with the following conditions

Voltage/Frequency: 210V-50Hz

Ambient Temperature: 31.25C





## 4 Standby power consumption

Voltage: 210.59V

Frequency: 50Hz

-----  
Current: 0.001716A  
-----

P active: 0.087W

P apparent: 0.361VA

P reactive: 0.351VAR

P factor: 0.240  
-----

Output voltage: 12.057V



## 5 Load testing

Characteristics

Voltage: 210.61V

Frequency: 50Hz

Loads: 0.000A to 0.250A

-----  
Minimum output voltage: 12.055V

Maximum output voltage: 12.088V

Regulation error absolute: -0.055V/+0.088V

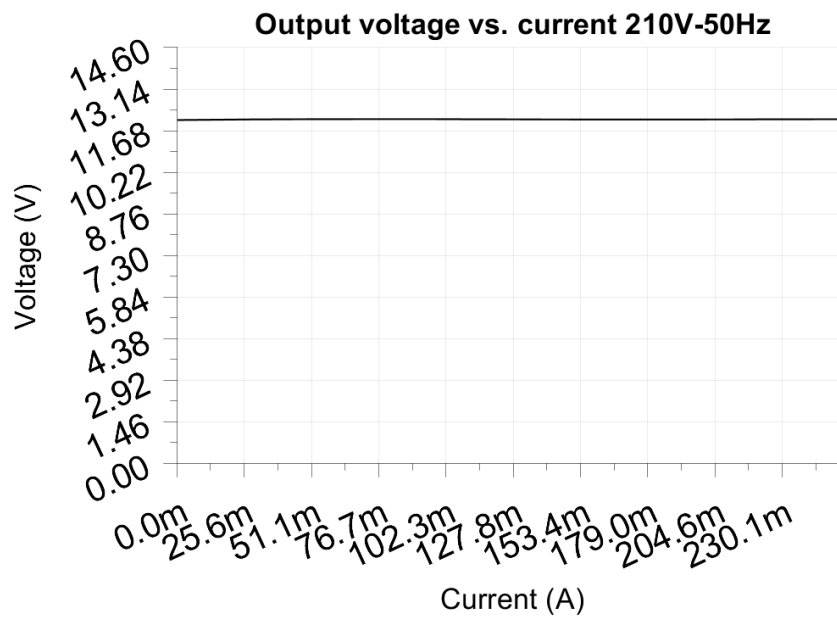
Regulation error relative: -0.5%/+0.7%

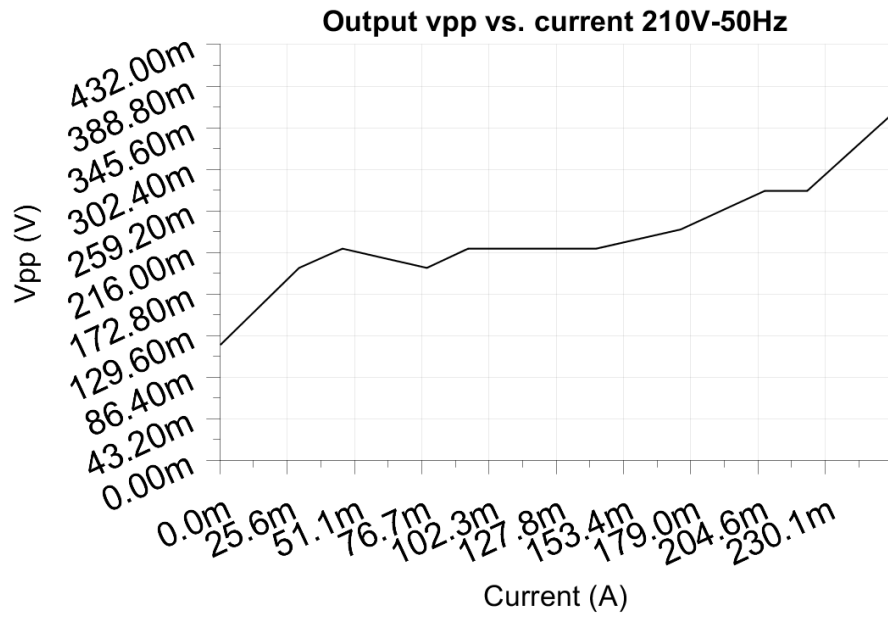
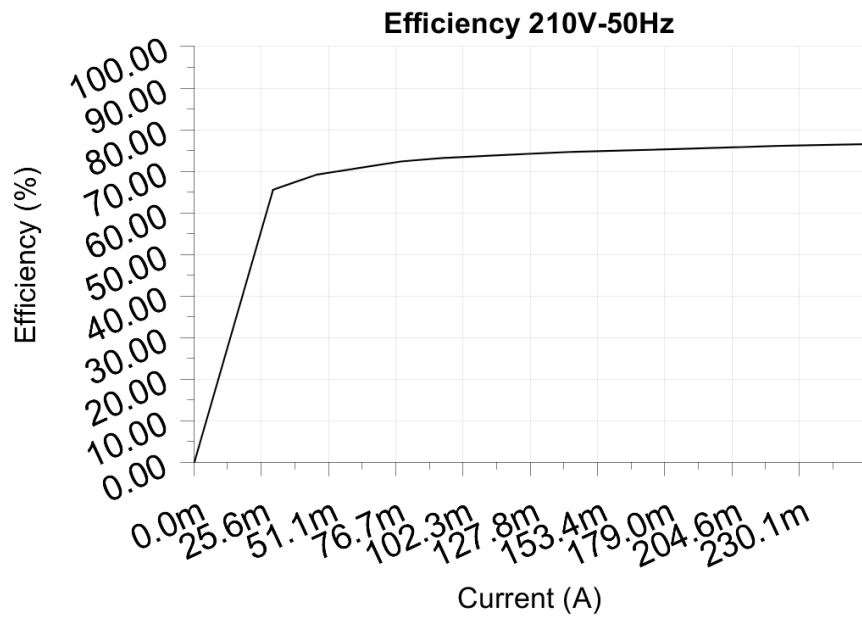
-----  
Vpp ripple&noise absolute: 0.360V

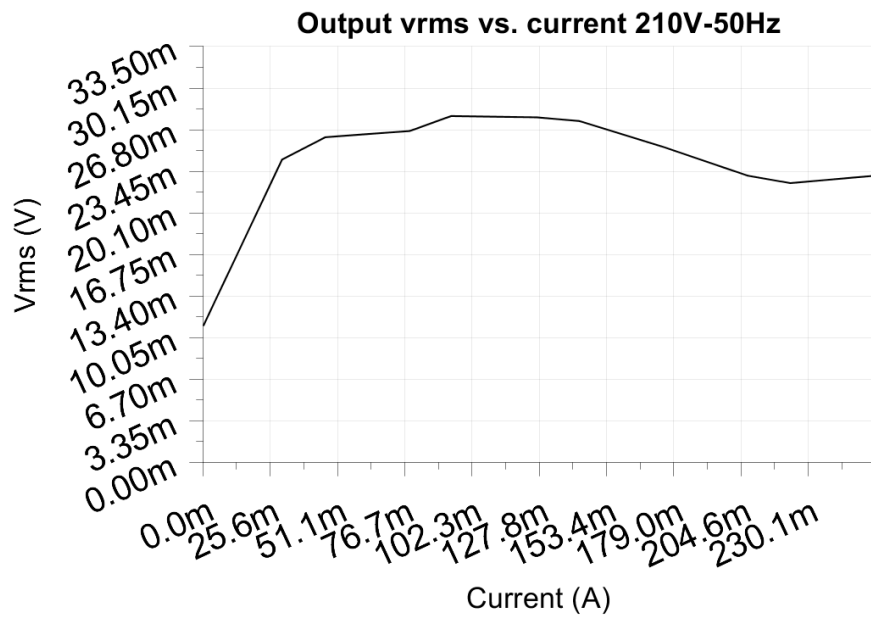
Vpp ripple&noise relative: 3.0%

-----  
RMS ripple&noise absolute: 0.028V

RMS ripple&noise relative: 0.2%









## 6 Turn on voltage

Testing when the PSU enables it's output

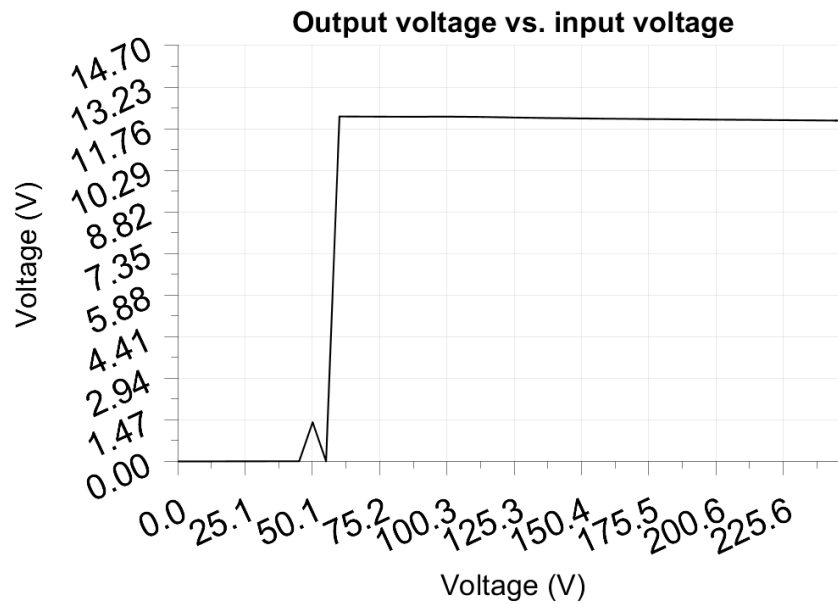
Test load: 0.025A

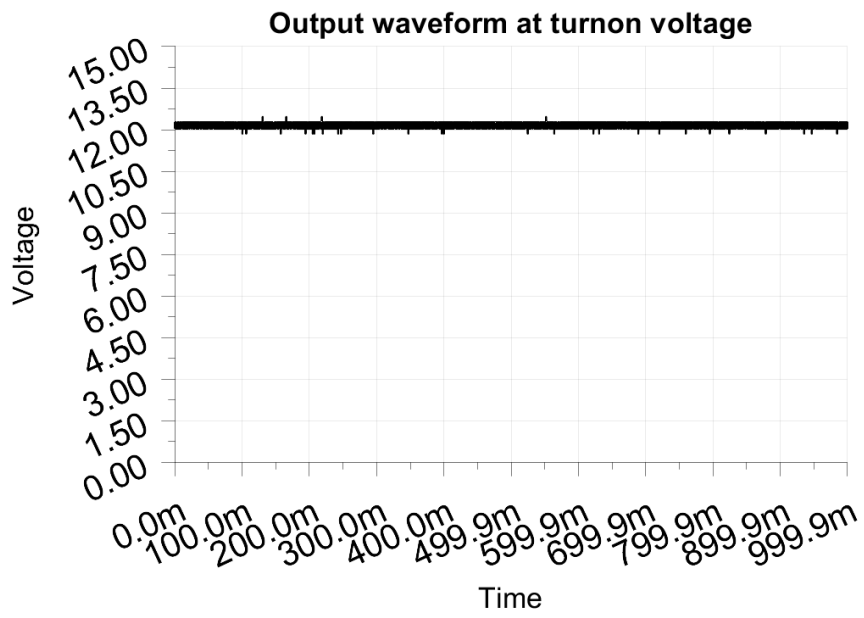
Test Frequency: 50Hz

Threshold: 9.000V

-----  
Turn-on voltage: 60.00V  
-----

Output voltage: 12.194V





## **7 Conducted EMI**

No EMI test results

## 8 Overload testing

No overload test results