



develop

PSU test report

Bernhard Woerndl-Aichriedler
bwa@xdevelop.at

1 Contents

- General information
- Point of operation
- Standby power consumption
- Load testing
- Turn on voltage
- Conducted EMI
- Overload testing

2 General information

Testing the following device

Manufacturer: Vigortronix
Device name: VTX-214-006-112
Serial number: 1
Nominal voltage: 12.000V
Nominal current: 0.500A
Tester: Bernhard Woerndl-Aichriedler <bwa@xdevelop.at>
Start time: 13-Jul-2016 23:09:22



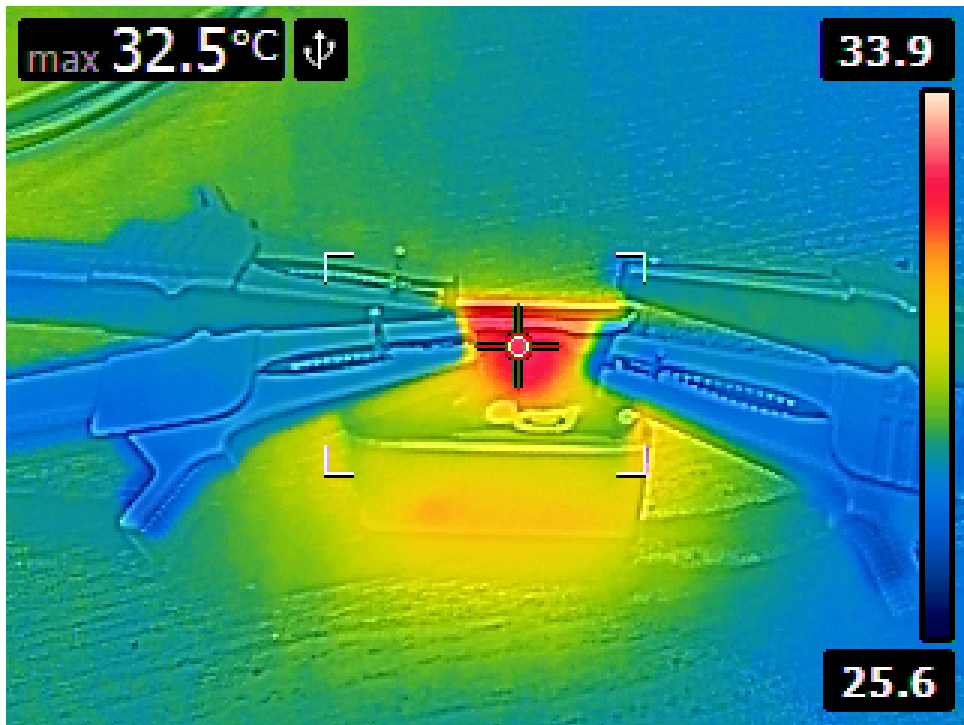
3 Point of operation

The test has been conducted with the following conditions

Voltage/Frequency: 230V-50Hz

Ambient Temperature: 30.79C





4 Standby power consumption

Voltage: 230.63V

Frequency: 50Hz

Current: 0.001555A

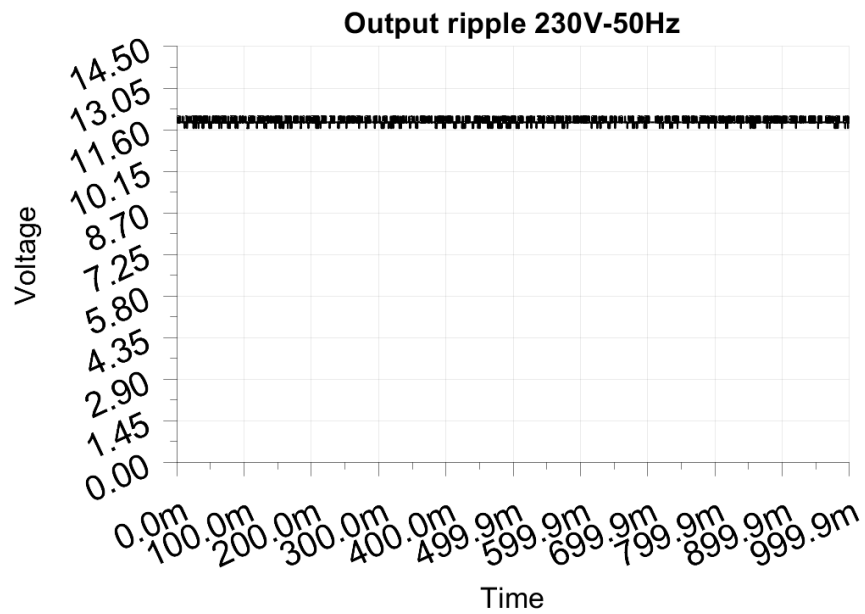
P active: 0.064W

P apparent: 0.359VA

P reactive: 0.353VAR

P factor: 0.179

Output voltage: 11.949V



5 Load testing

Characteristics

Voltage: 230.63V

Frequency: 50Hz

Loads: 0.000A to 0.500A

Minimum output voltage: 11.919V

Maximum output voltage: 11.943V

Regulation error absolute: -0.081V/+0.057V

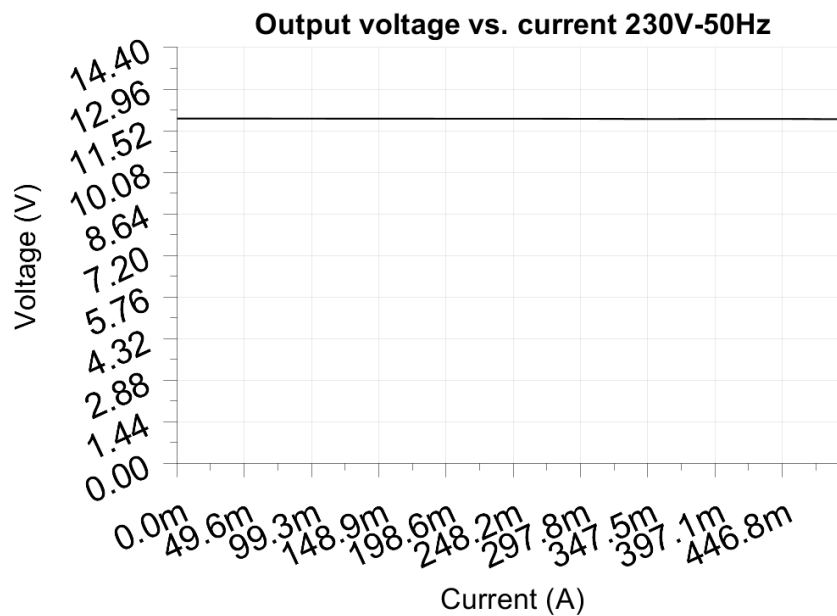
Regulation error relative: -0.7%/+0.5%

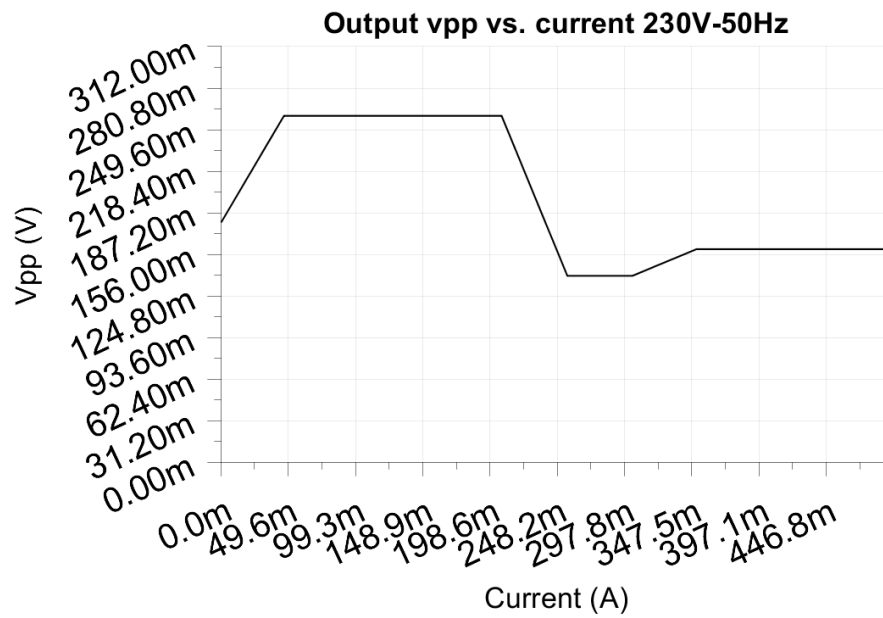
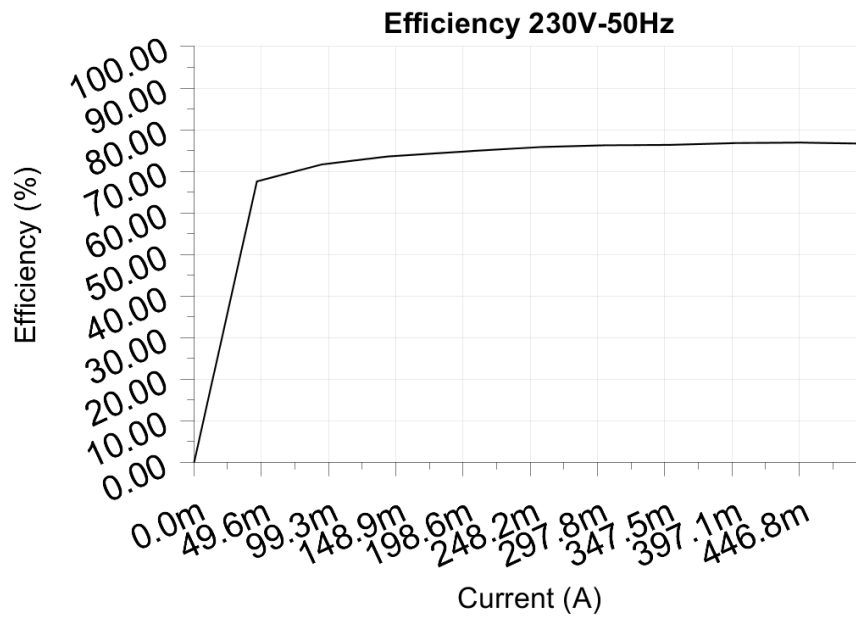
Vpp ripple&noise absolute: 0.260V

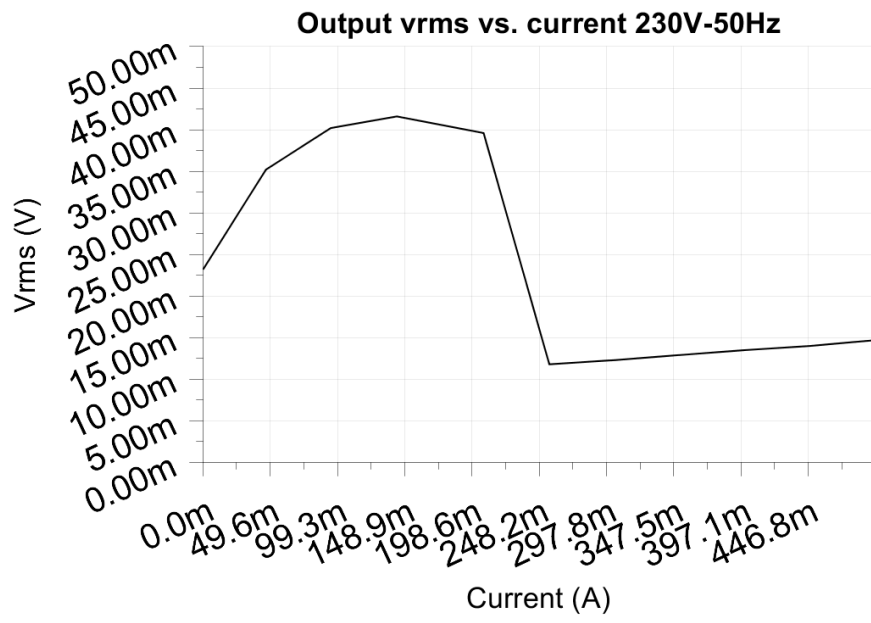
Vpp ripple&noise relative: 2.2%

RMS ripple&noise absolute: 0.042V

RMS ripple&noise relative: 0.3%







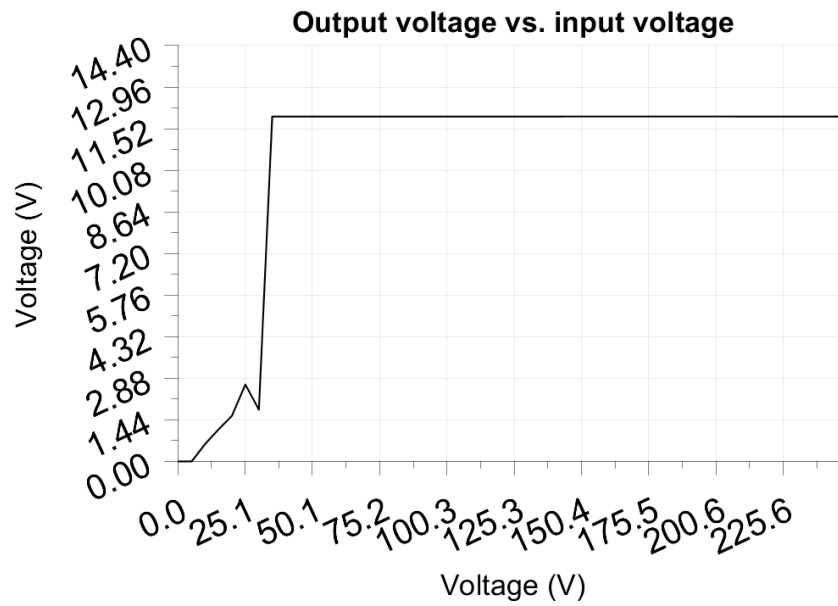
6 Turn on voltage

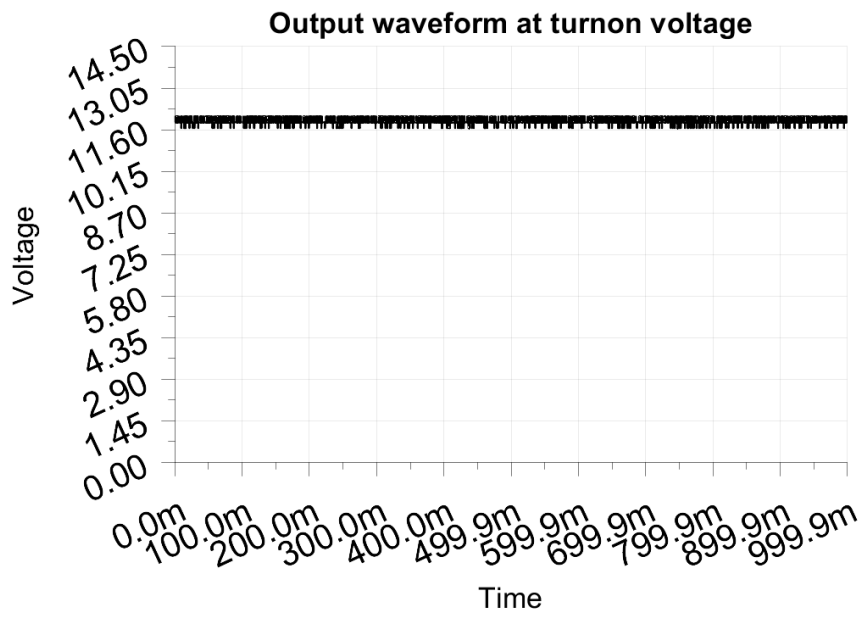
Testing when the PSU enables it's output

Test load: 0.050A
Test Frequency: 50Hz
Threshold: 9.000V

Turn-on voltage: 35.00V

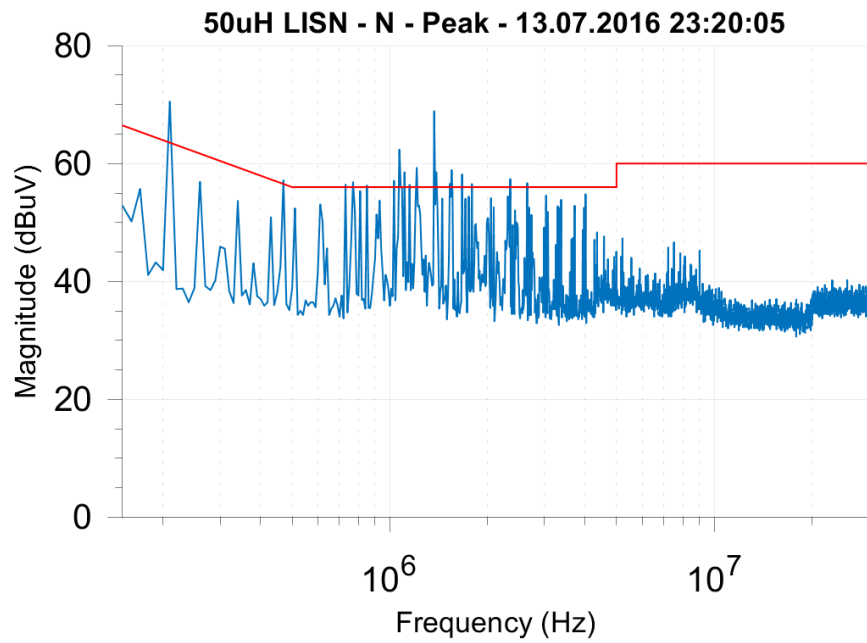
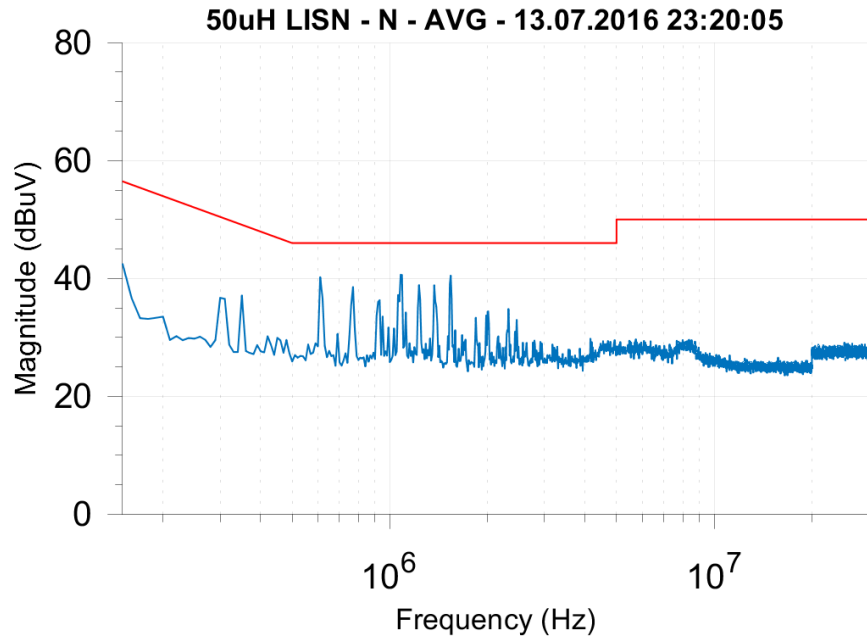
Output voltage: 11.942V

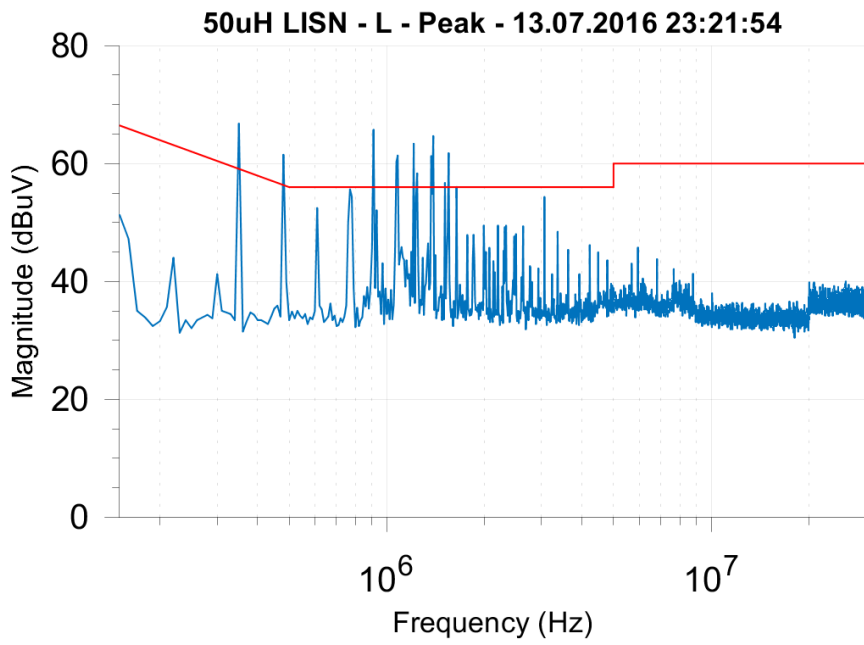
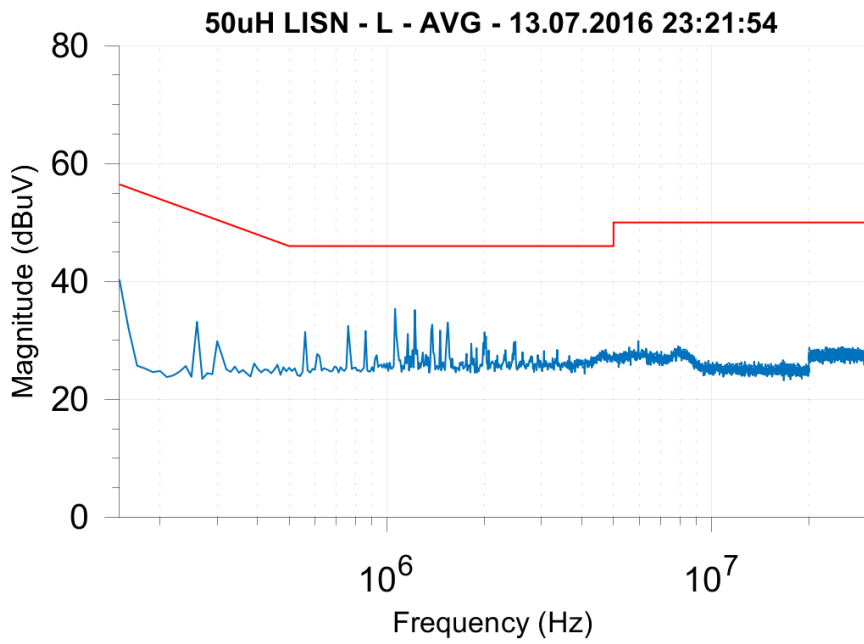




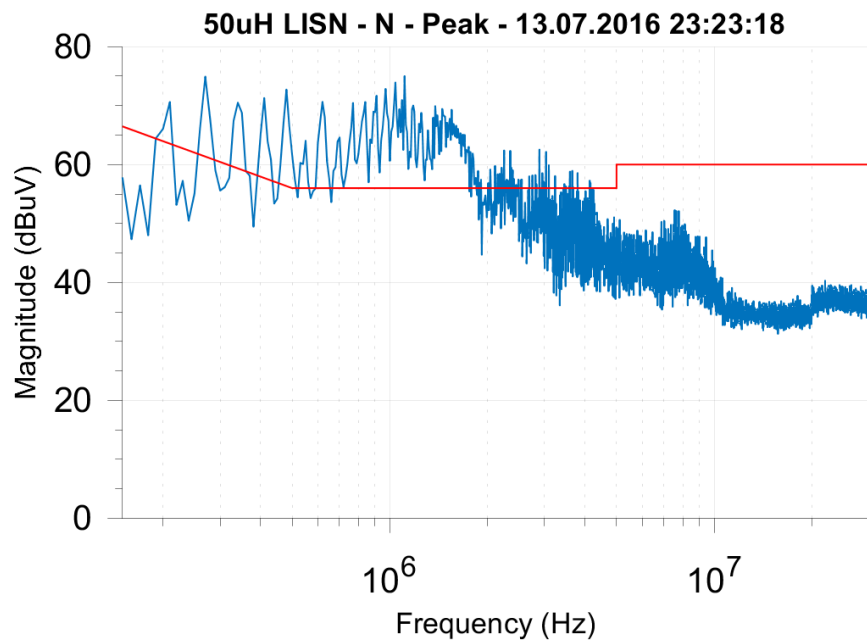
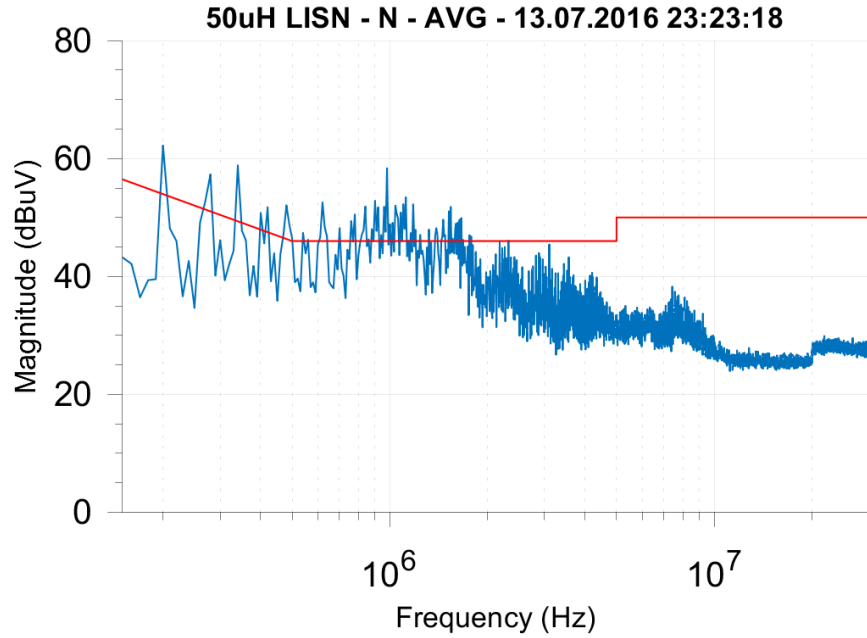
7 Conducted EMI

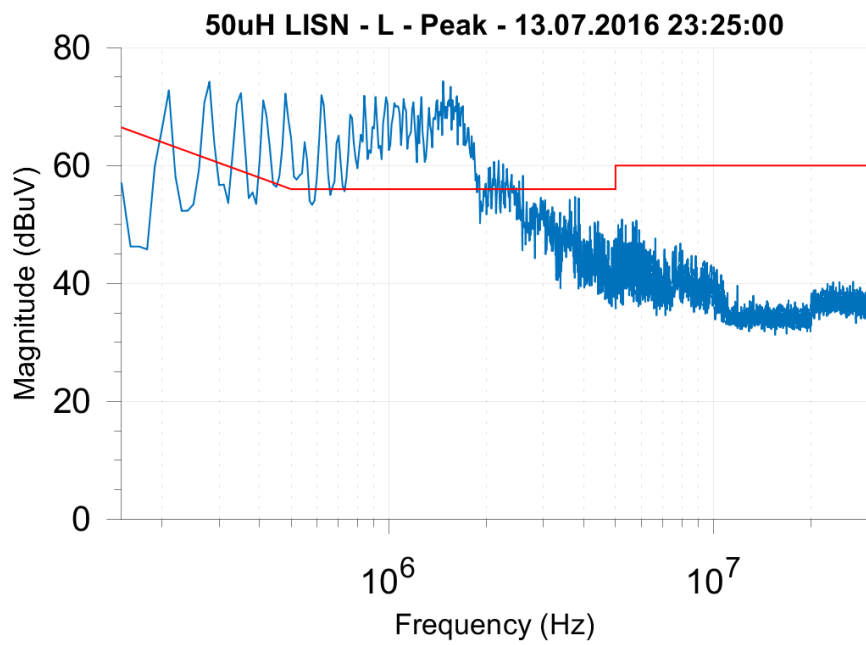
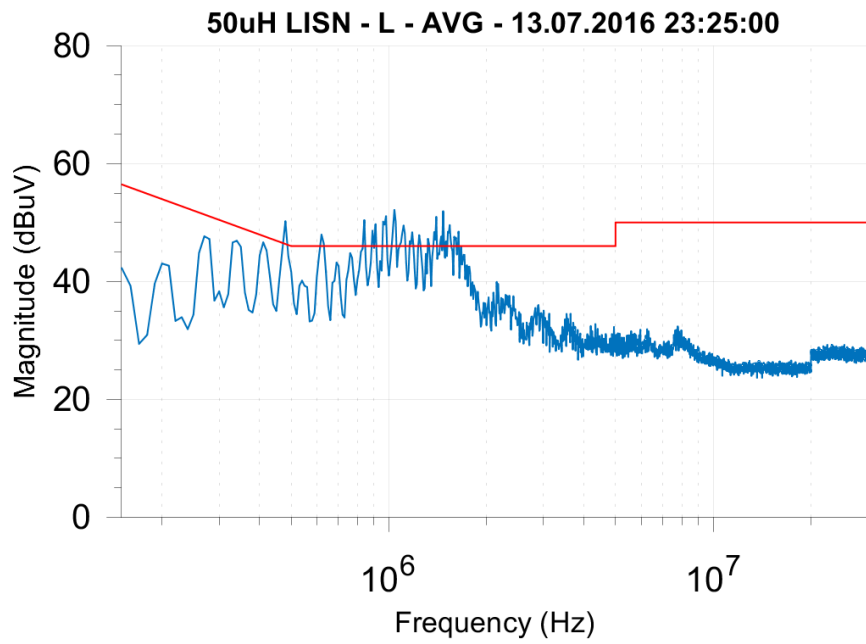
7.1 Output load 0.000A



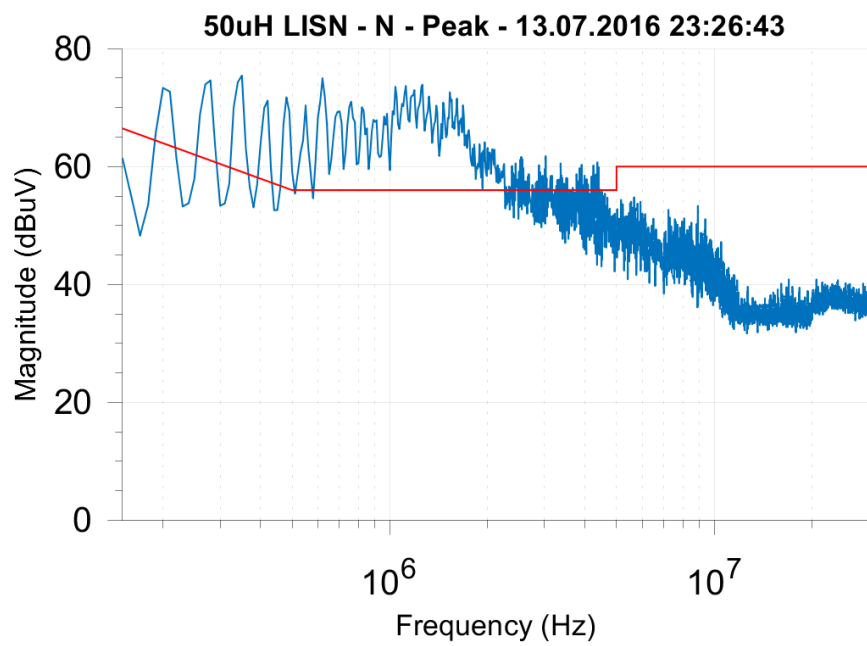
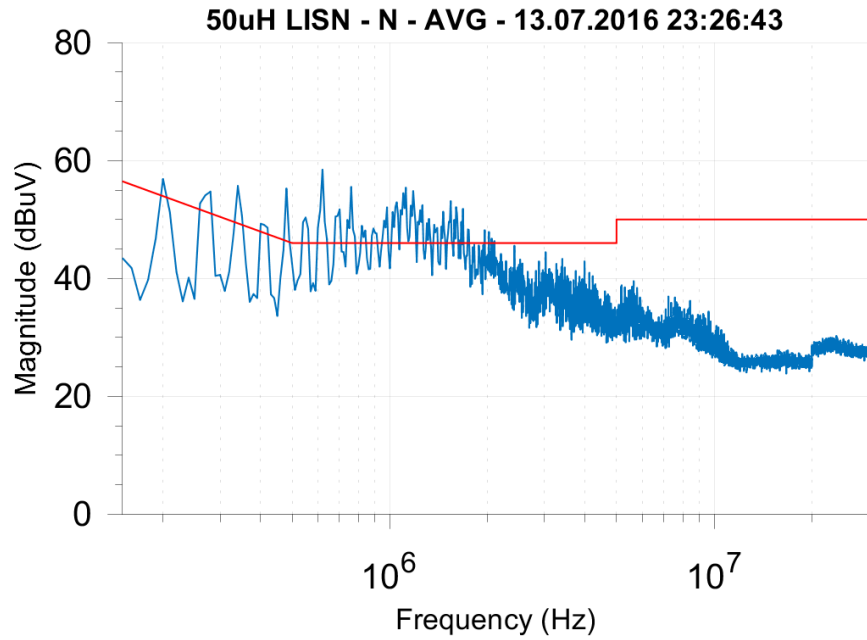


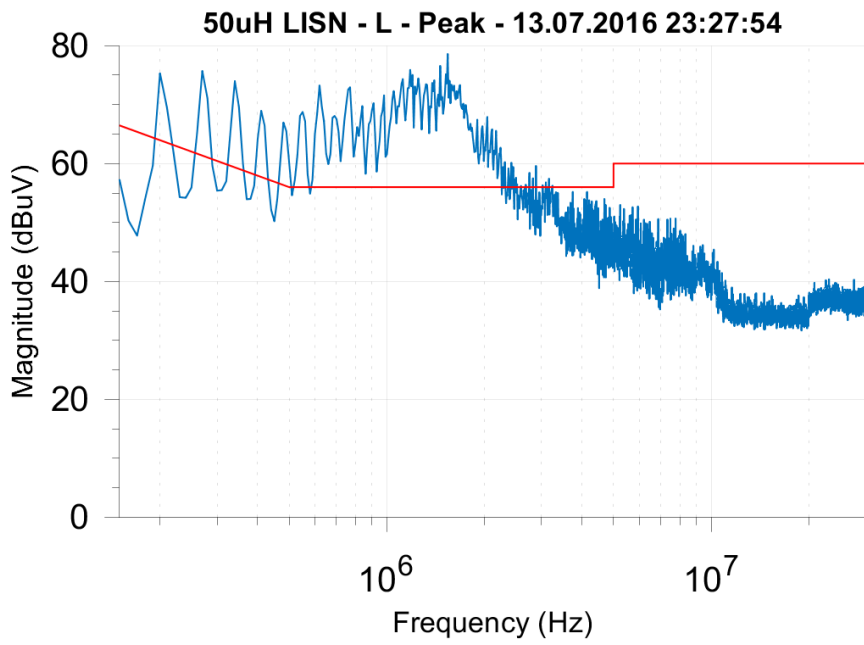
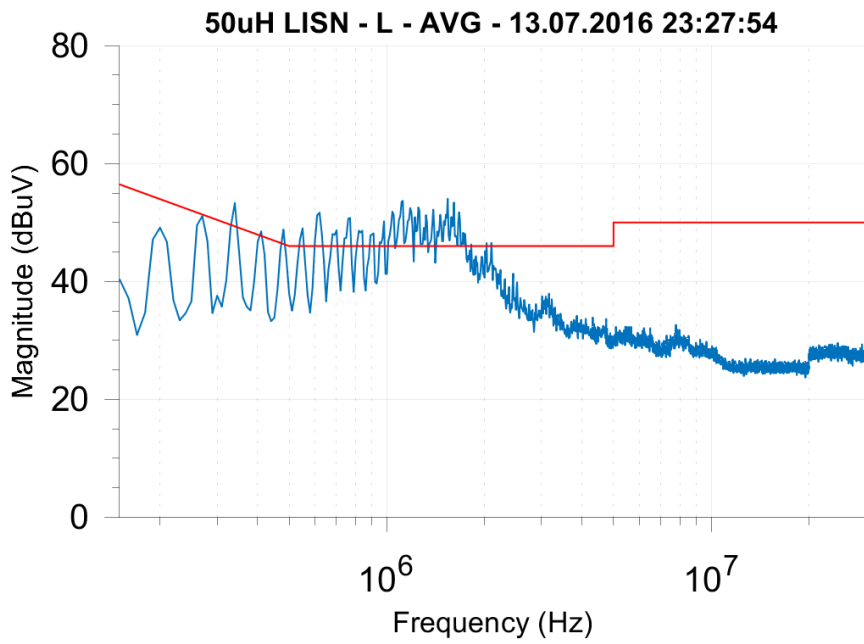
7.2 Output load 0.250A





7.3 Output load 0.500A





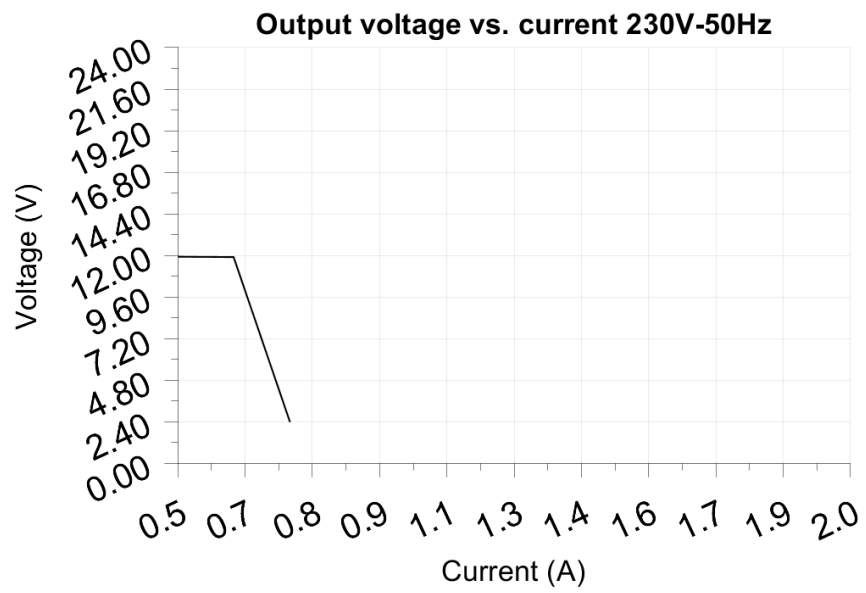
8 Overload testing

Test voltage: 230.00V

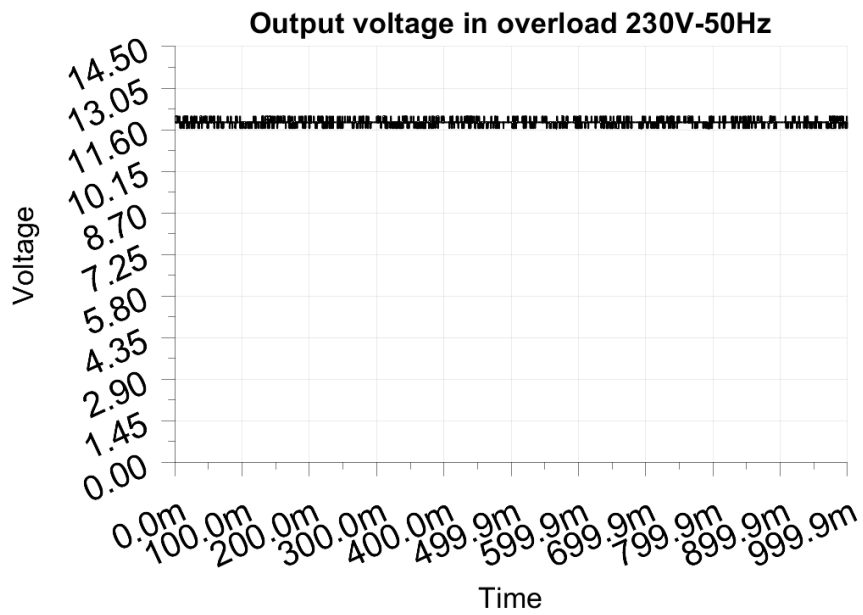
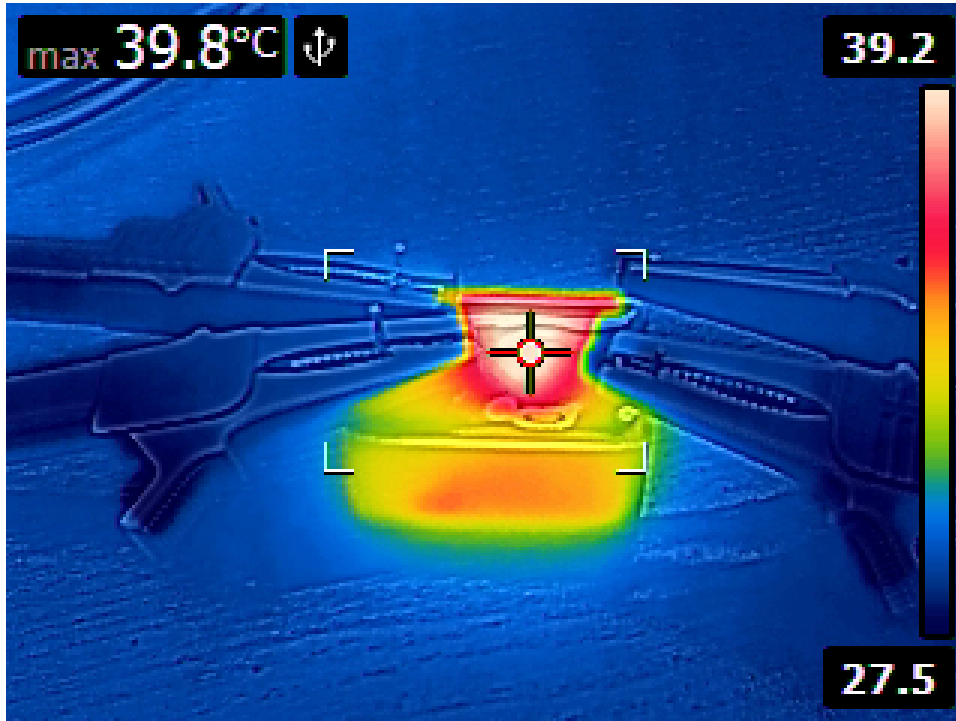
Test Frequency: 50Hz

Threshold: <6.000V

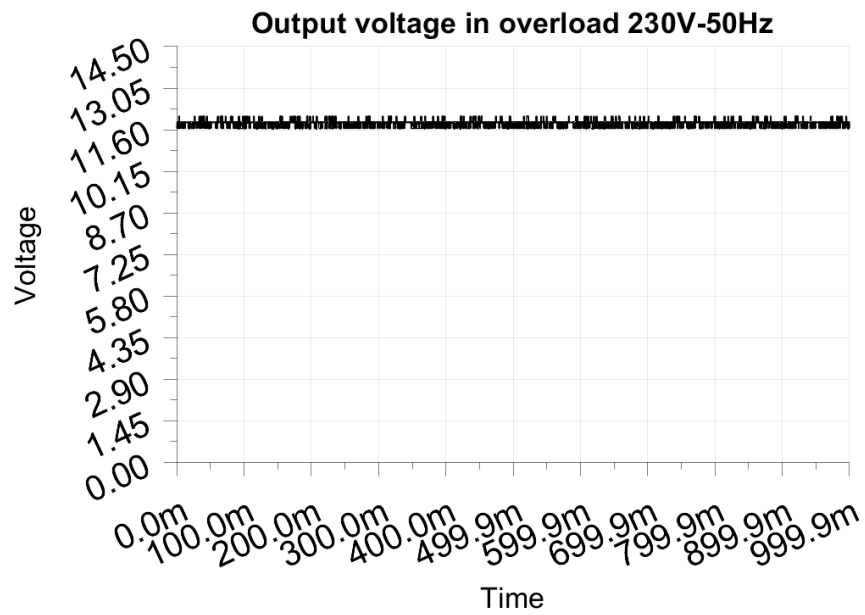
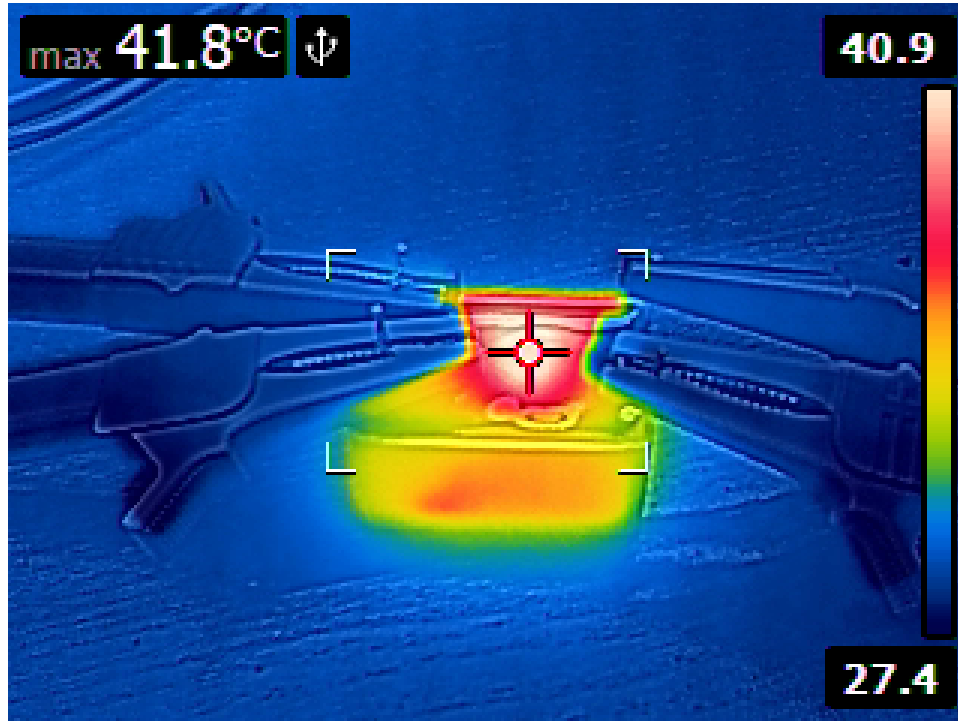
Maximum output current before shutdown: 0.750A



8.1 Output load 0.500A or 100%



8.2 Output load 0.625A or 125%



8.3 Output load 0.750A or 150%

