



develop

PSU test report

Bernhard Woerndl-Aichriedler
bwa@xdevelop.at

1 Contents

- General information
- Point of operation
- Standby power consumption
- Load testing
- Turn on voltage
- Conducted EMI
- Overload testing

2 General information

Testing the following device

Manufacturer: Vigortronix
Device name: VTX-214-010-112
Serial number: 1
Nominal voltage: 12.000V
Nominal current: 0.830A
Tester: Bernhard Woerndl-Aichriedler <bwa@xdevelop.at>
Start time: 13-Jul-2016 21:38:55

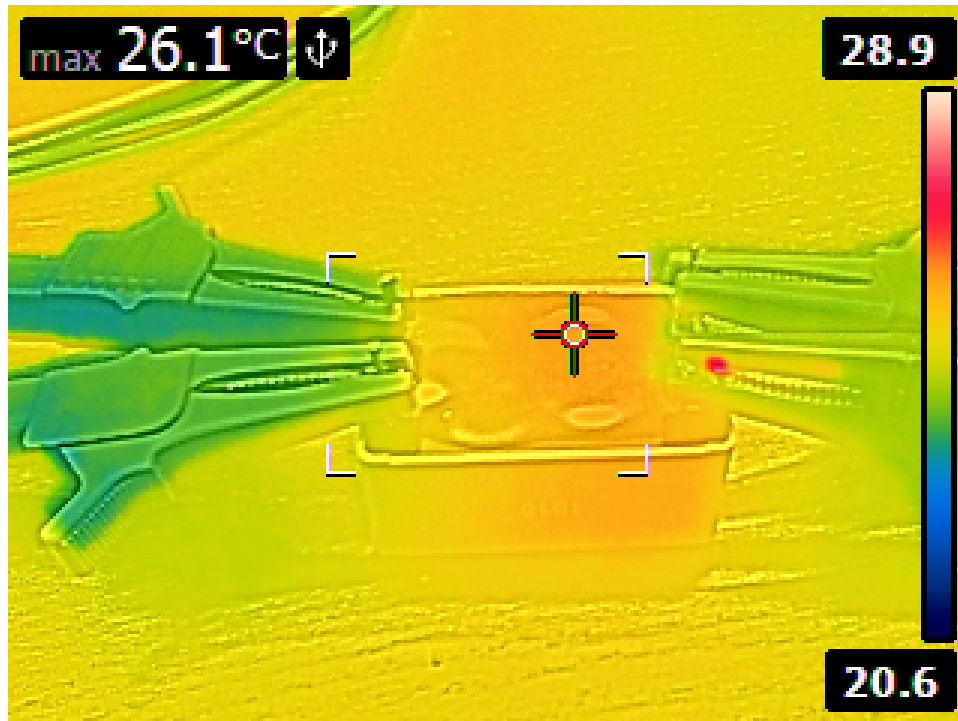


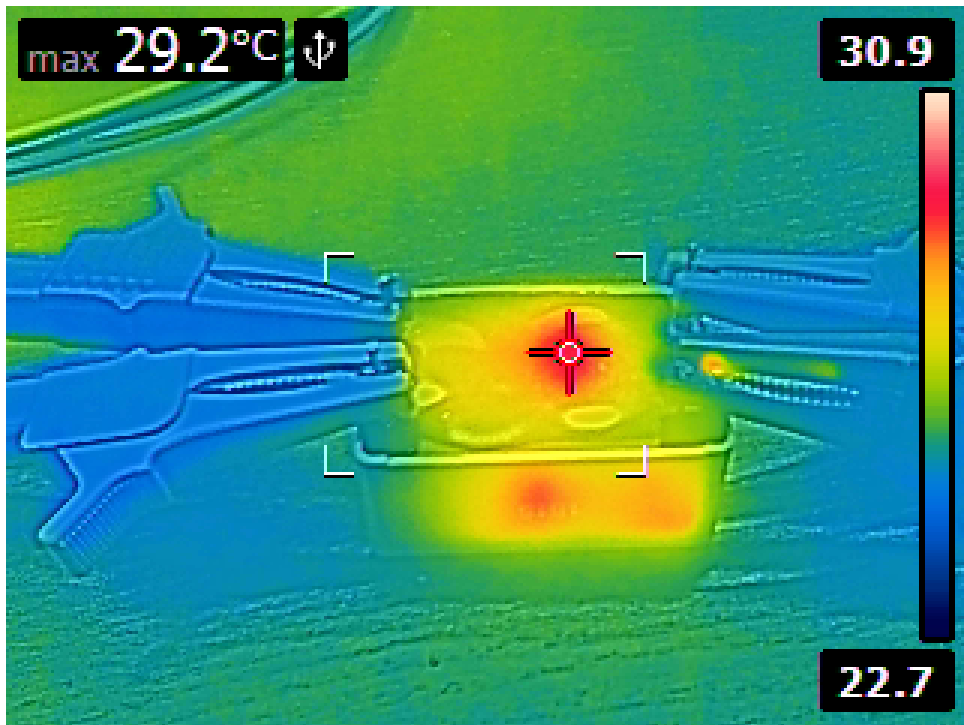
3 Point of operation

The test has been conducted with the following conditions

Voltage/Frequency: 250V-50Hz

Ambient Temperature: 28.61C





4 Standby power consumption

Voltage: 250.69V

Frequency: 50Hz

Current: 0.003419A

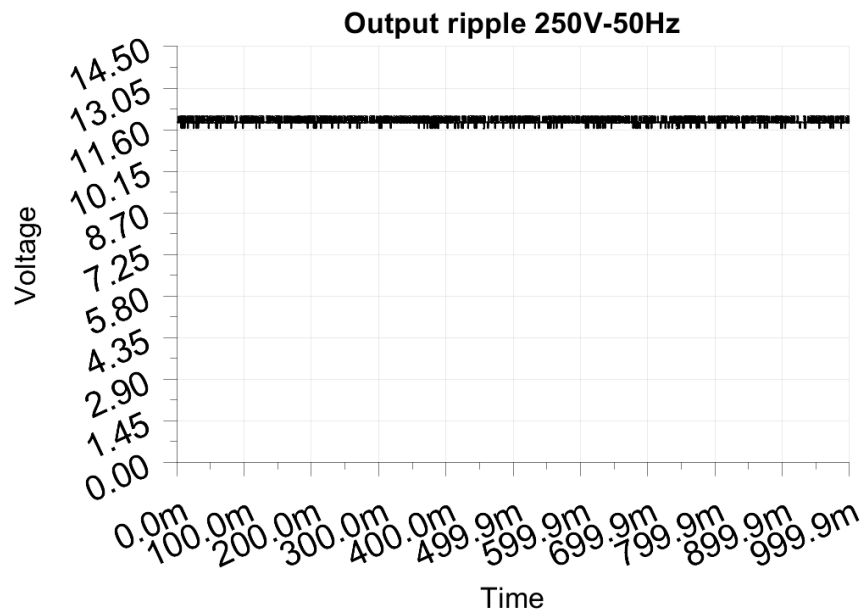
P active: 0.179W

P apparent: 0.857VA

P reactive: 0.838VAR

P factor: 0.209

Output voltage: 11.924V



5 Load testing

Characteristics

Voltage: 250.69V

Frequency: 50Hz

Loads: 0.000A to 0.830A

Minimum output voltage: 11.907V

Maximum output voltage: 11.924V

Regulation error absolute: -0.093V/+0.076V

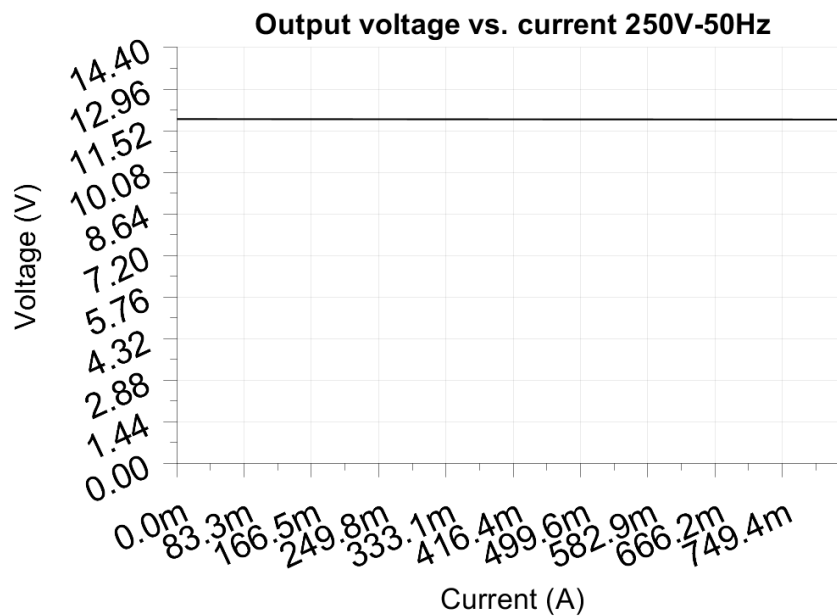
Regulation error relative: -0.8%/+0.6%

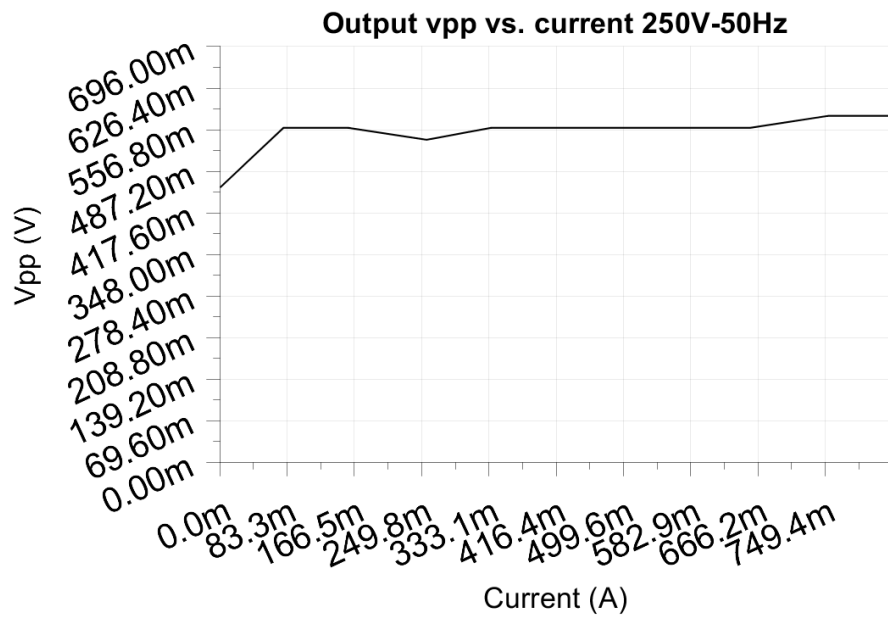
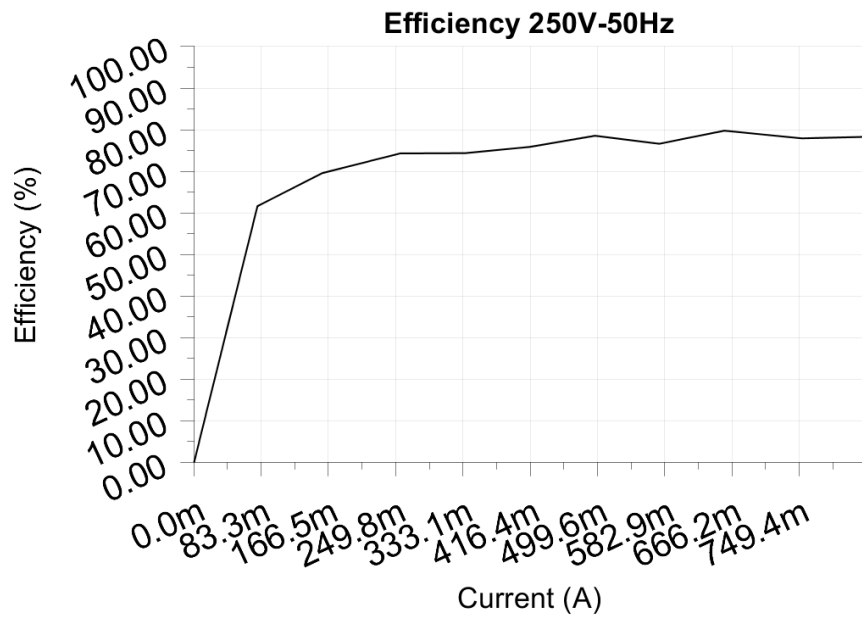
Vpp ripple&noise absolute: 0.580V

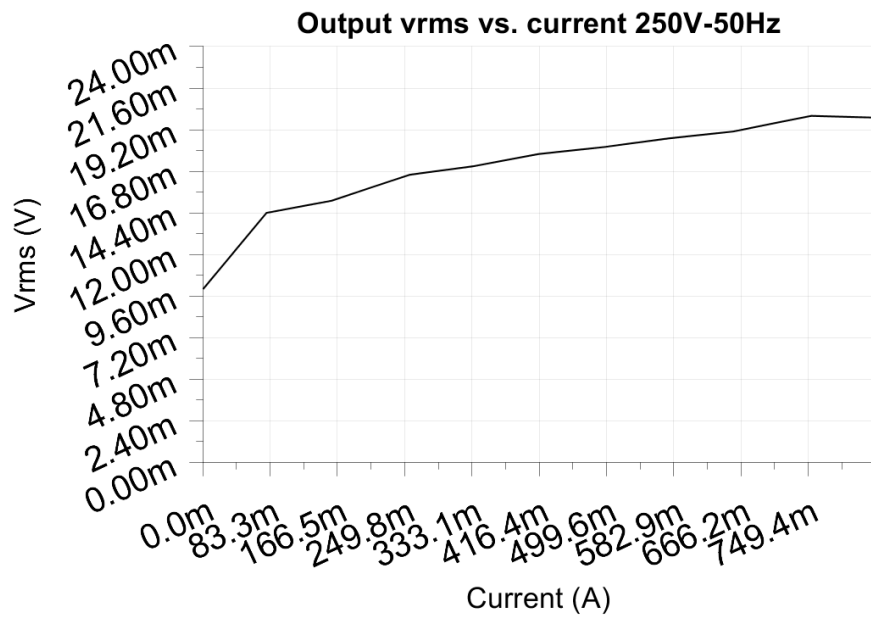
Vpp ripple&noise relative: 4.8%

RMS ripple&noise absolute: 0.020V

RMS ripple&noise relative: 0.2%







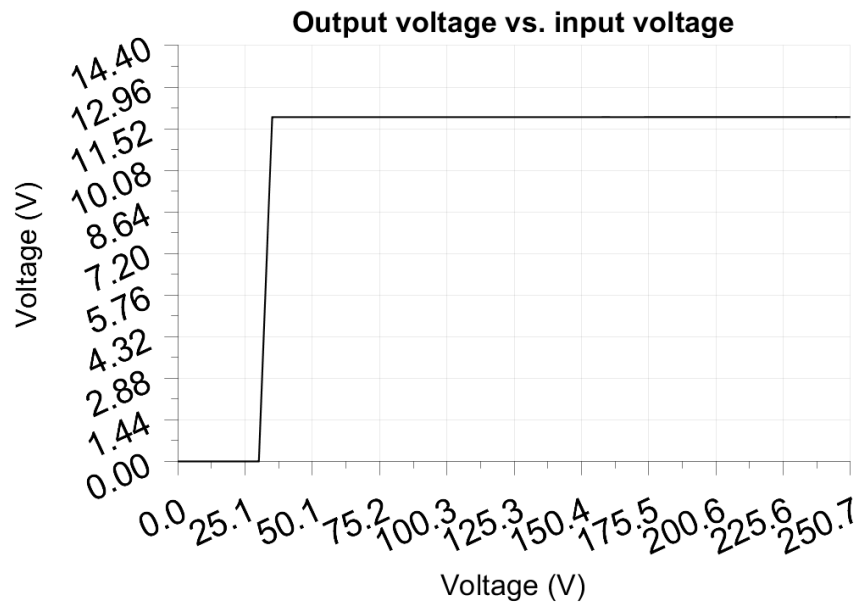
6 Turn on voltage

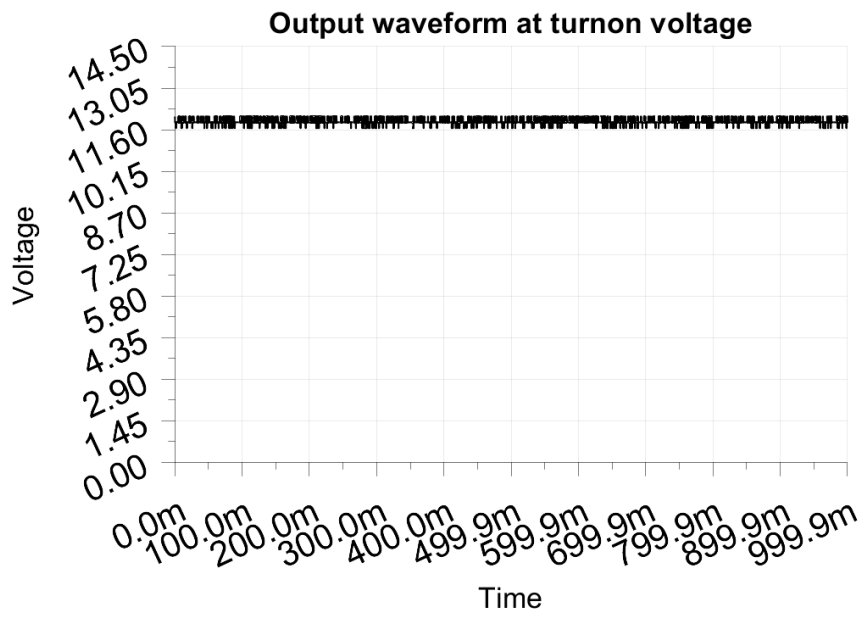
Testing when the PSU enables it's output

Test load: 0.083A
Test Frequency: 50Hz
Threshold: 9.000V

Turn-on voltage: 35.00V

Output voltage: 11.922V





7 Conducted EMI

No EMI test results

8 Overload testing

No overload test results