



develop

PSU test report

Bernhard Woerndl-Aichriedler
bwa@xdevelop.at

1 Contents

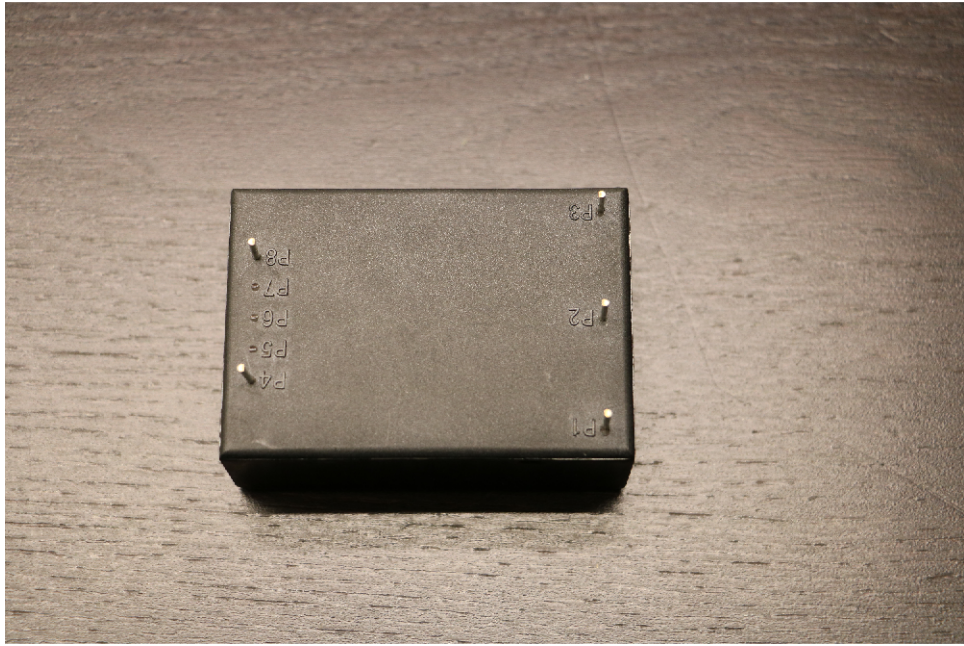
- General information
- Point of operation
- Standby power consumption
- Load testing
- Turn on voltage
- Conducted EMI
- Overload testing

2 General information

Testing the following device

Manufacturer: Vigortronix
Device name: VTX-214-030-112
Serial number: 1
Nominal voltage: 12.000V
Nominal current: 2.500A
Tester: Bernhard Woerndl-Aichriedler <bwa@xdevelop.at>
Start time: 13-Jul-2016 13:41:48



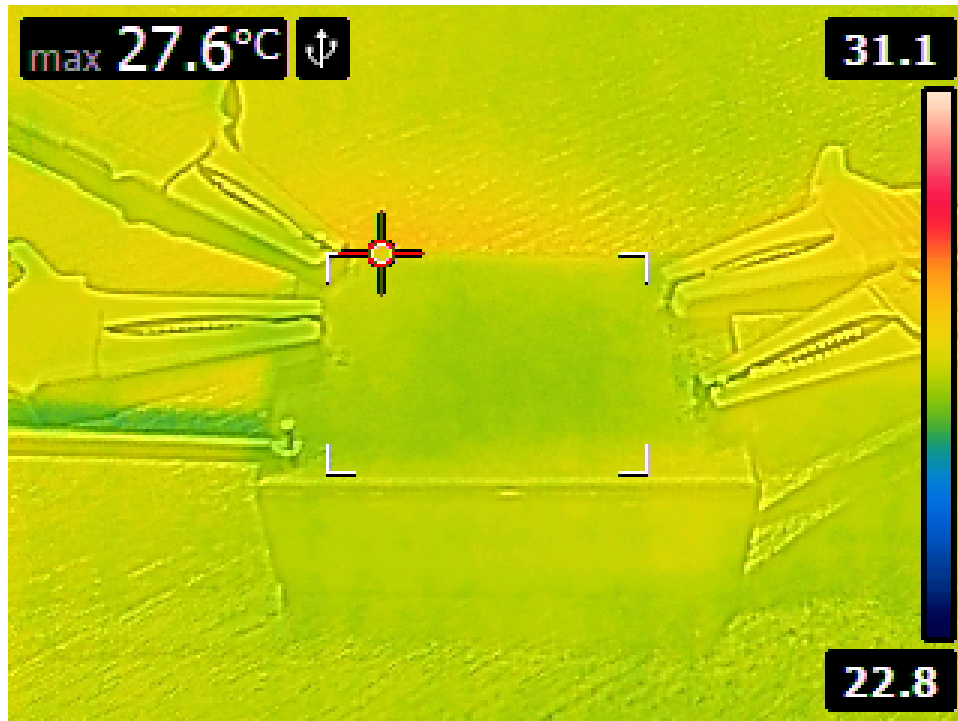


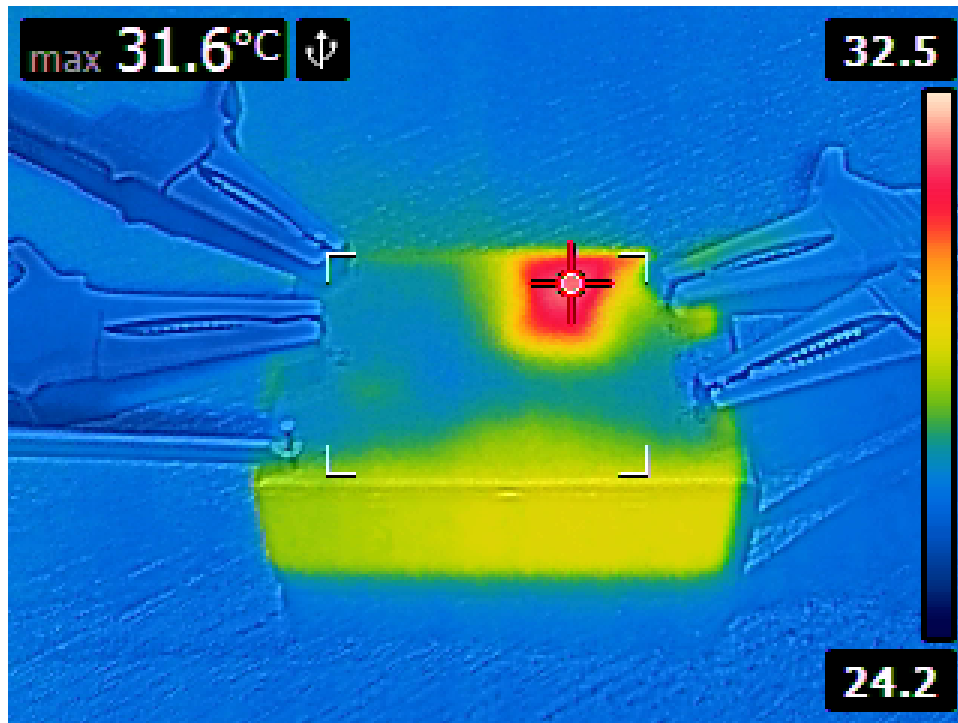
3 Point of operation

The test has been conducted with the following conditions

Voltage/Frequency: 210V-50Hz

Ambient Temperature: 29.75C





4 Standby power consumption

Voltage: 210.60V

Frequency: 50Hz

Current: 0.010254A

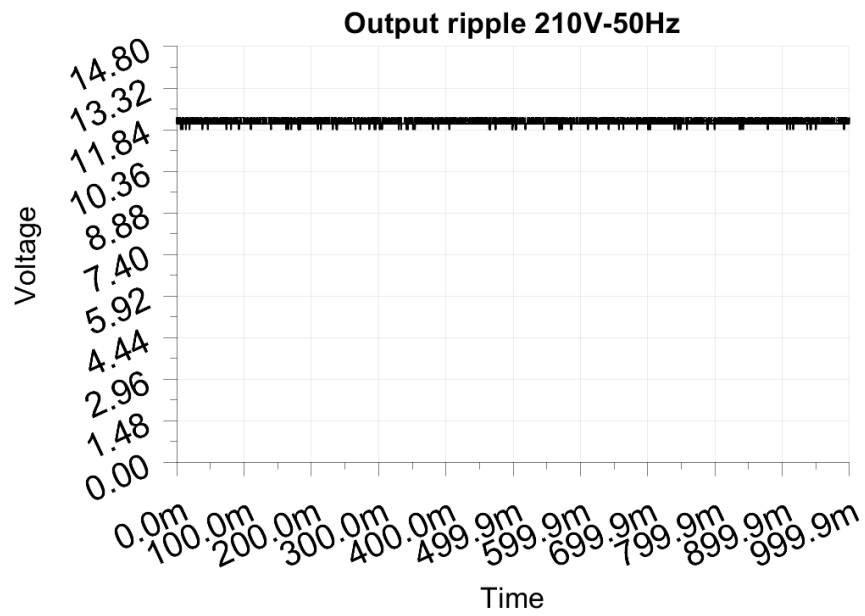
P active: 0.387W

P apparent: 2.160VA

P reactive: 2.124VAR

P factor: 0.179

Output voltage: 12.142V



5 Load testing

Characteristics

Voltage: 210.61V

Frequency: 50Hz

Loads: 0.000A to 2.500A

Minimum output voltage: 12.081V

Maximum output voltage: 12.142V

Regulation error absolute: -0.081V/+0.142V

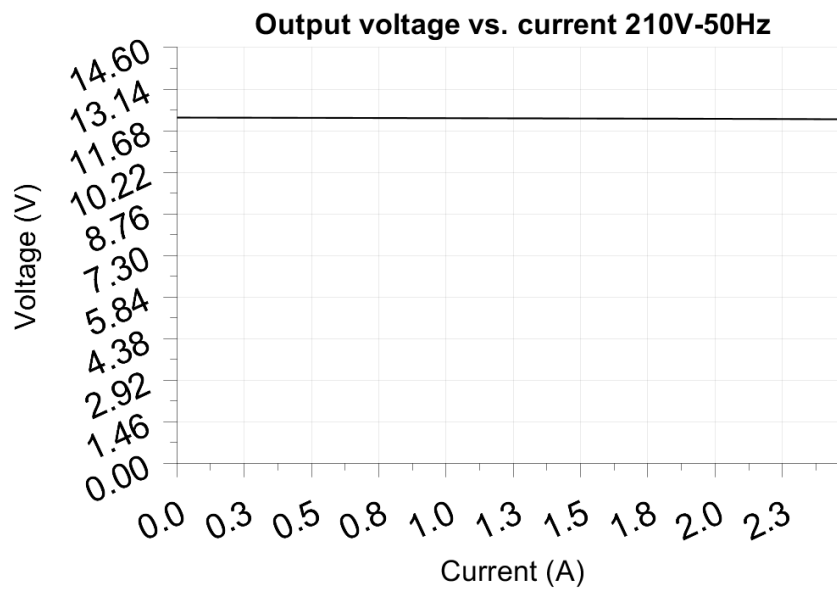
Regulation error relative: -0.7%/+1.2%

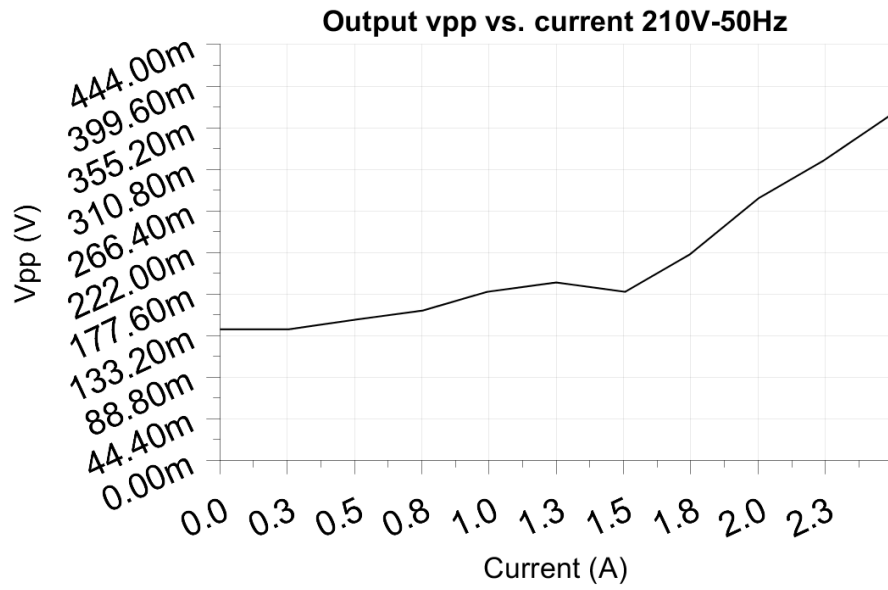
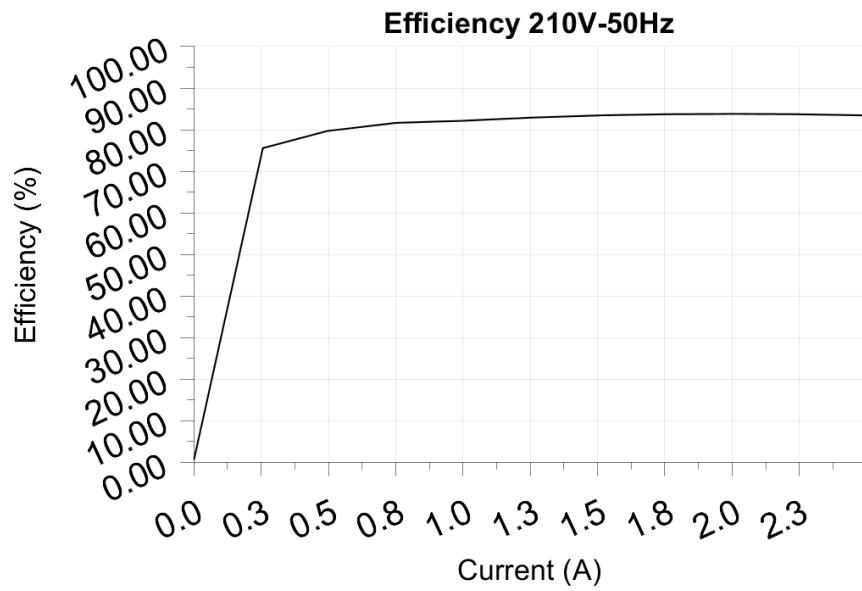
Vpp ripple&noise absolute: 0.370V

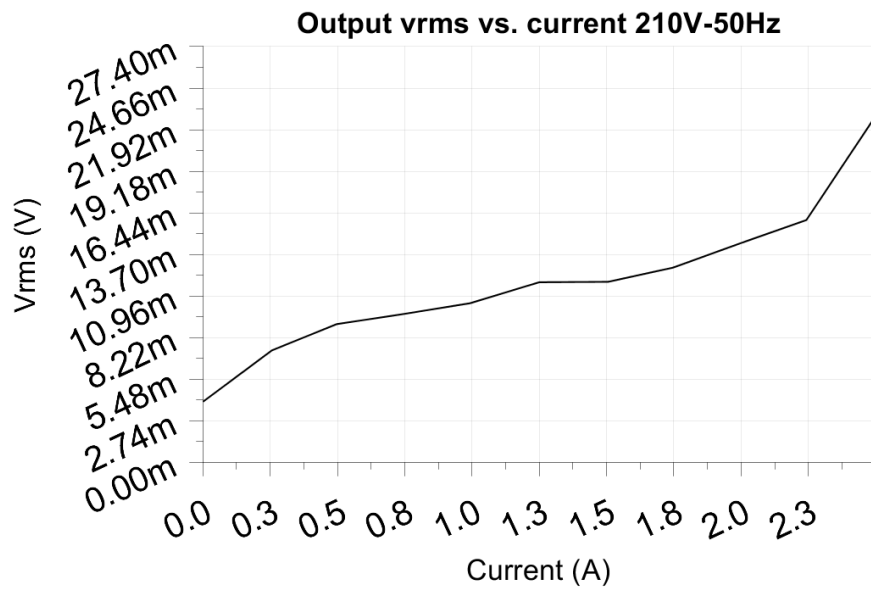
Vpp ripple&noise relative: 3.1%

RMS ripple&noise absolute: 0.023V

RMS ripple&noise relative: 0.2%







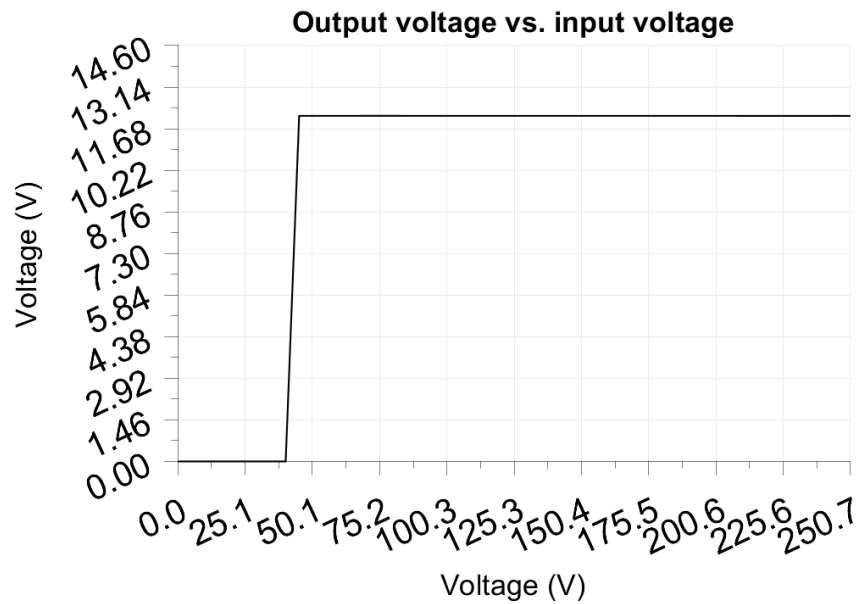
6 Turn on voltage

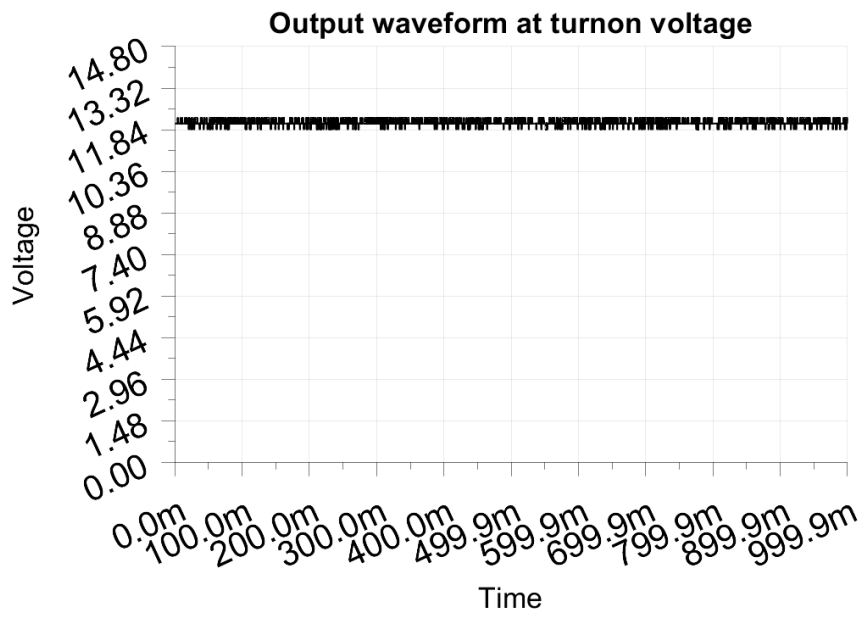
Testing when the PSU enables it's output

Test load: 0.250A
Test Frequency: 50Hz
Threshold: 9.000V

Turn-on voltage: 45.00V

Output voltage: 12.133V





7 Conducted EMI

No EMI test results

8 Overload testing

No overload test results