



develop

# PSU test report

*Bernhard Woerndl-Aichriedler*  
*bwa@xdevelop.at*

## 1 Contents

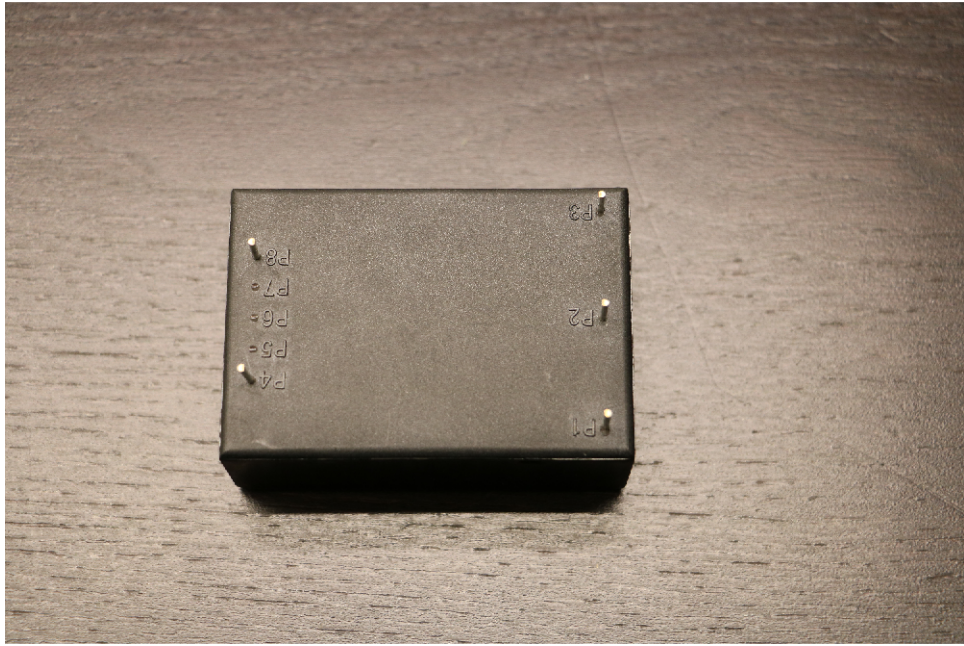
- General information
- Point of operation
- Standby power consumption
- Load testing
- Turn on voltage
- Conducted EMI
- Overload testing

## 2 General information

Testing the following device

Manufacturer: Vigortronix  
Device name: VTX-214-030-112  
Serial number: 1  
Nominal voltage: 12.000V  
Nominal current: 2.500A  
Tester: Bernhard Woerndl-Aichriedler <bwa@xdevelop.at>  
Start time: 13-Jul-2016 13:41:48



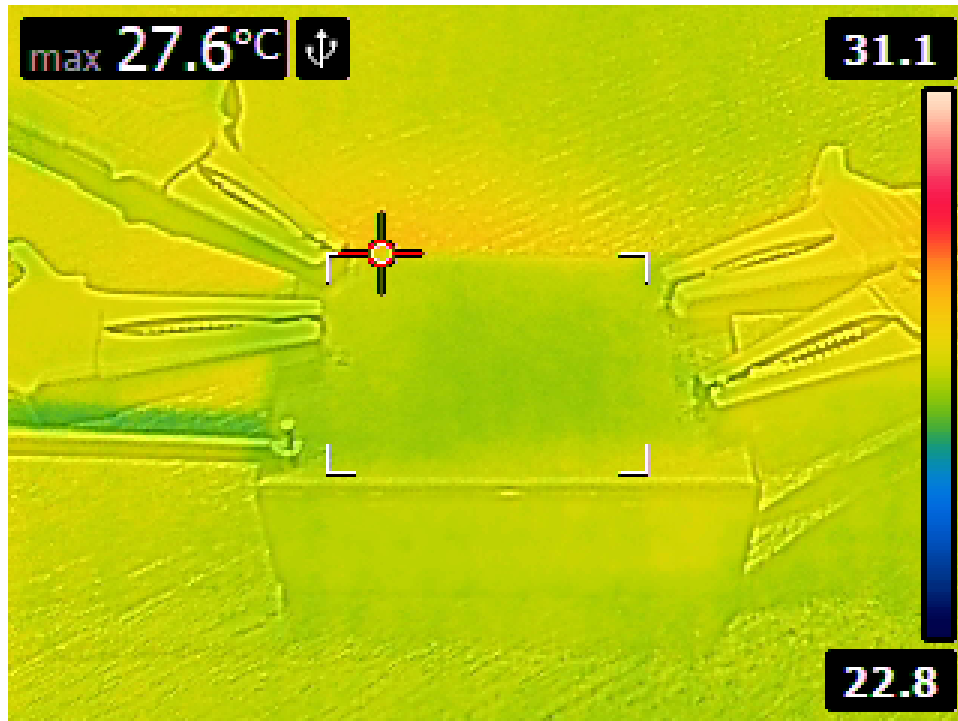


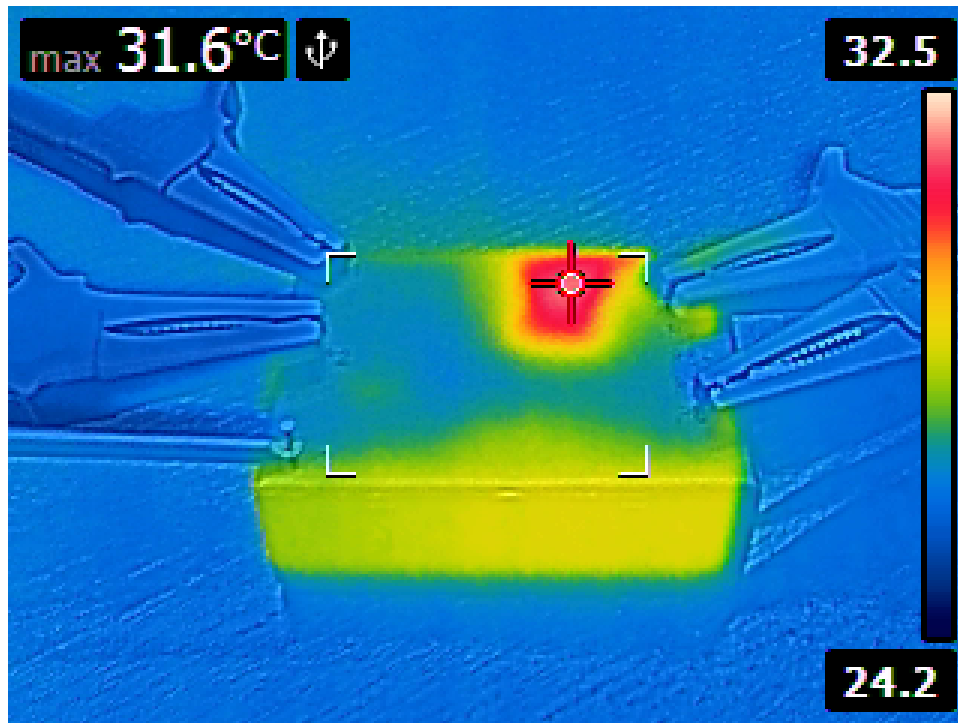
### 3 Point of operation

The test has been conducted with the following conditions

Voltage/Frequency: 250V-50Hz

Ambient Temperature: 29.75C





## 4 Standby power consumption

Voltage: 250.70V

Frequency: 50Hz

-----  
Current: 0.011702A  
-----

P active: 0.445W

P apparent: 2.922VA

P reactive: 2.888VAR

P factor: 0.152  
-----

Output voltage: 12.142V



## 5 Load testing

Characteristics

Voltage: 250.67V

Frequency: 50Hz

Loads: 0.000A to 2.500A

-----  
Minimum output voltage: 12.079V

Maximum output voltage: 12.140V

Regulation error absolute: -0.079V/+0.140V

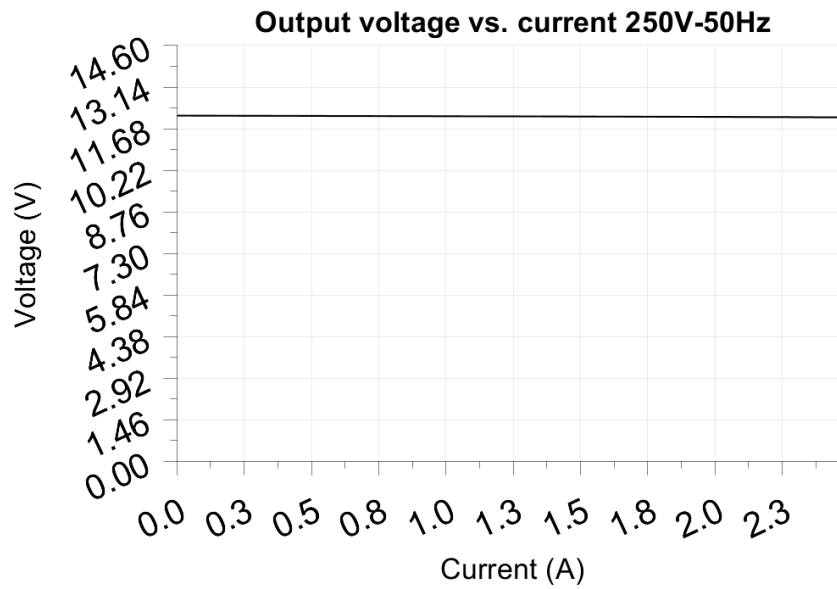
Regulation error relative: -0.7%/+1.2%

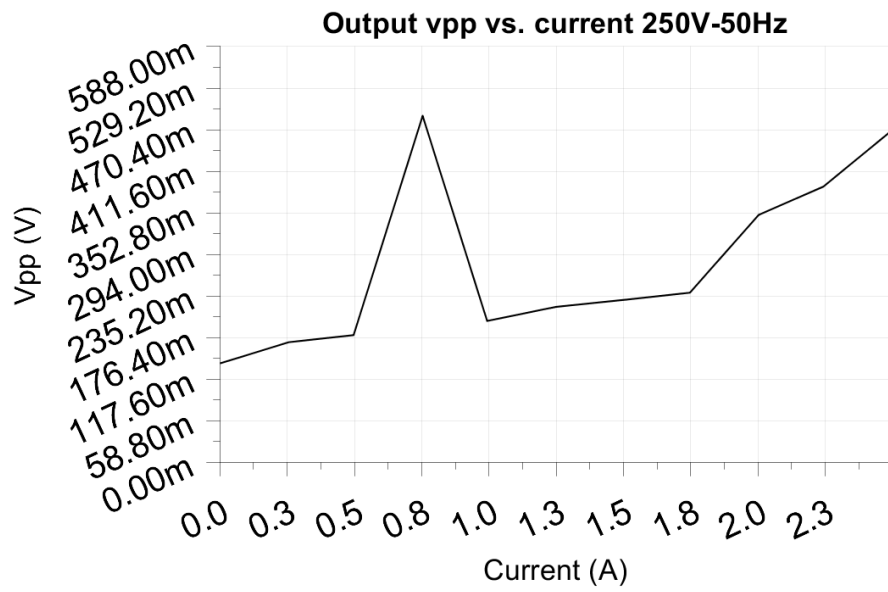
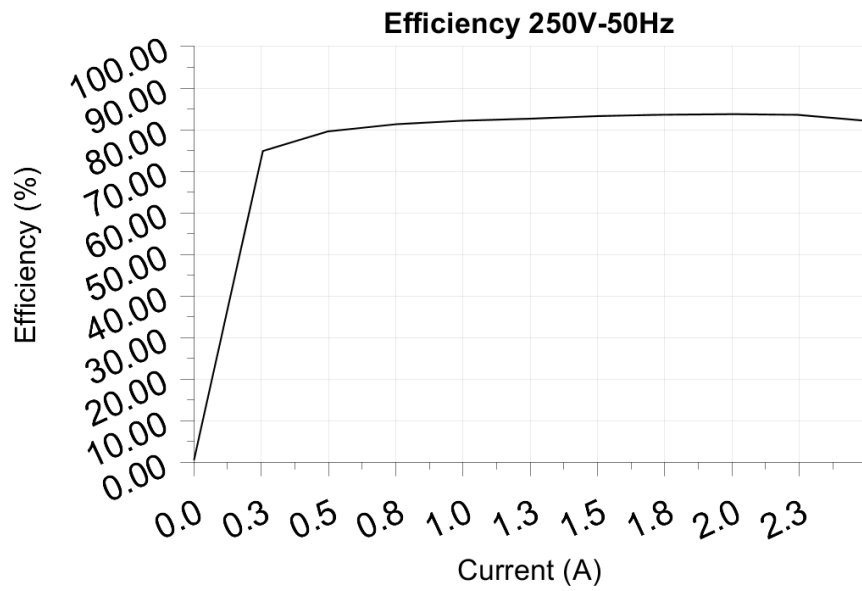
-----  
Vpp ripple&noise absolute: 0.490V

Vpp ripple&noise relative: 4.1%

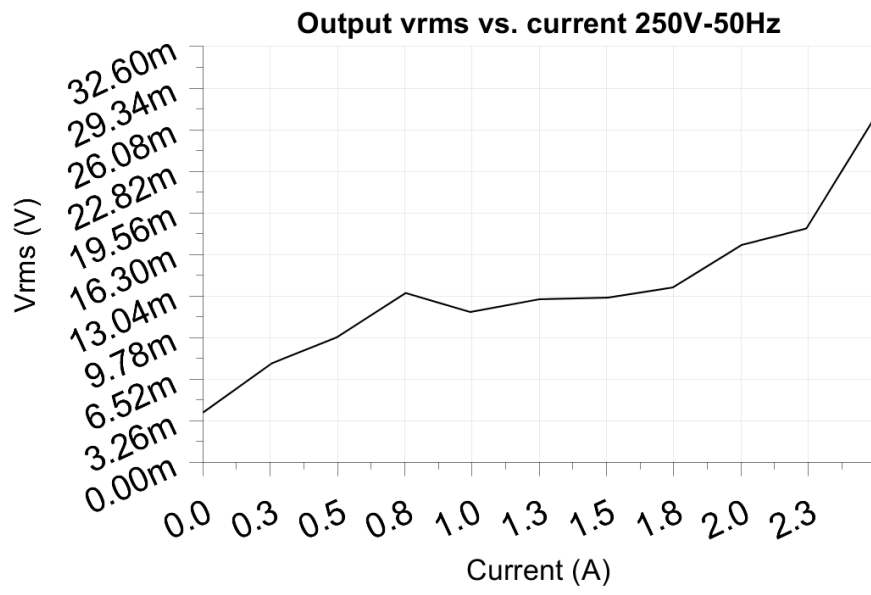
-----  
RMS ripple&noise absolute: 0.027V

RMS ripple&noise relative: 0.2%









## 6 Turn on voltage

Testing when the PSU enables it's output

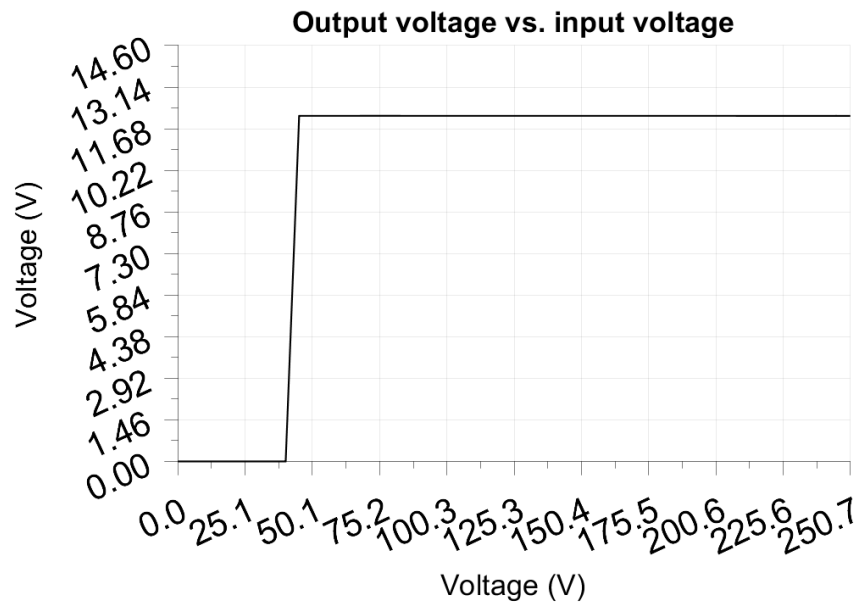
Test load: 0.250A

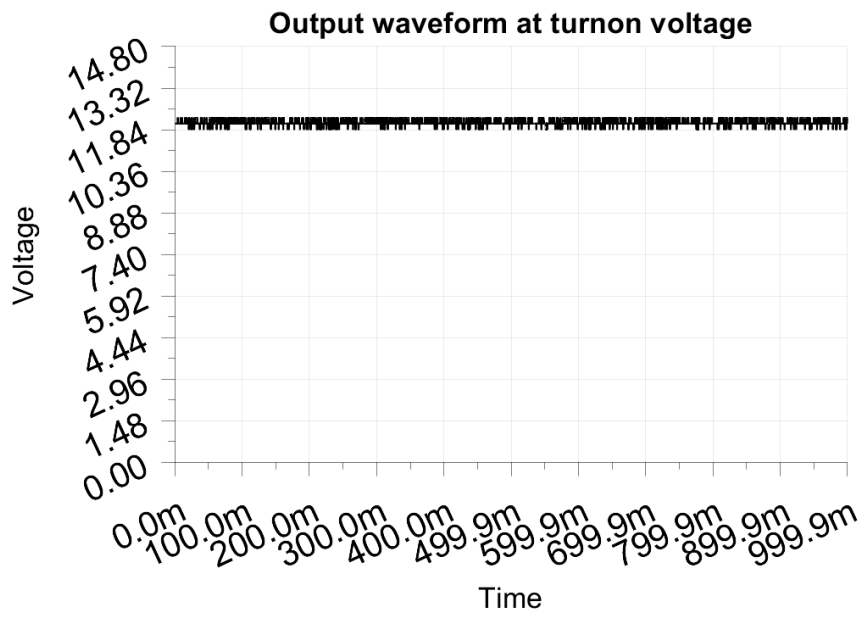
Test Frequency: 50Hz

Threshold: 9.000V

-----  
Turn-on voltage: 45.00V  
-----

Output voltage: 12.133V





## **7 Conducted EMI**

No EMI test results

## 8 Overload testing

No overload test results